



US008310696B2

(12) **United States Patent**  
**Gustafson et al.**

(10) **Patent No.:** **US 8,310,696 B2**  
(45) **Date of Patent:** **Nov. 13, 2012**

(54) **MULTIPRODUCT PRINTING WORKFLOW SYSTEM WITH DYNAMIC SCHEDULING**

(75) Inventors: **Mark Gustafson**, Spokane, WA (US);  
**Sam Comstock**, Spokane, WA (US)

(73) Assignee: **Reischling Press, Inc.**, Tukwila, WA (US)

(\* ) Notice: Subject to any disclaimer, the term of this patent is extended or adjusted under 35 U.S.C. 154(b) by 1083 days.

(21) Appl. No.: **12/011,169**

(22) Filed: **Jan. 23, 2008**

(65) **Prior Publication Data**

US 2009/0185212 A1 Jul. 23, 2009

(51) **Int. Cl.**  
**G06F 3/12** (2006.01)

(52) **U.S. Cl.** ..... **358/1.15**; 358/1.13; 358/1.16

(58) **Field of Classification Search** ..... 358/1.15,  
358/1.16, 1.1

See application file for complete search history.

(56) **References Cited**

U.S. PATENT DOCUMENTS

7,065,567 B1 \* 6/2006 Squires et al. .... 709/223  
7,755,778 B2 \* 7/2010 Rai et al. .... 358/1.1

7,818,285 B1 \* 10/2010 Klatt et al. .... 707/600  
2002/0026379 A1 \* 2/2002 Chiarabini et al. .... 705/26  
2003/0035138 A1 \* 2/2003 Schilling ..... 358/1.15  
2004/0001219 A1 \* 1/2004 Wen et al. .... 358/1.15  
2004/0039647 A1 \* 2/2004 Roche ..... 705/26  
2005/0105129 A1 \* 5/2005 Takahashi ..... 358/1.15  
2007/0157273 A1 \* 7/2007 McIntyre et al. .... 725/105  
2007/0233543 A1 \* 10/2007 Oshima ..... 705/8  
2008/0144084 A1 \* 6/2008 Rai ..... 358/1.15

\* cited by examiner

Primary Examiner — King Poon

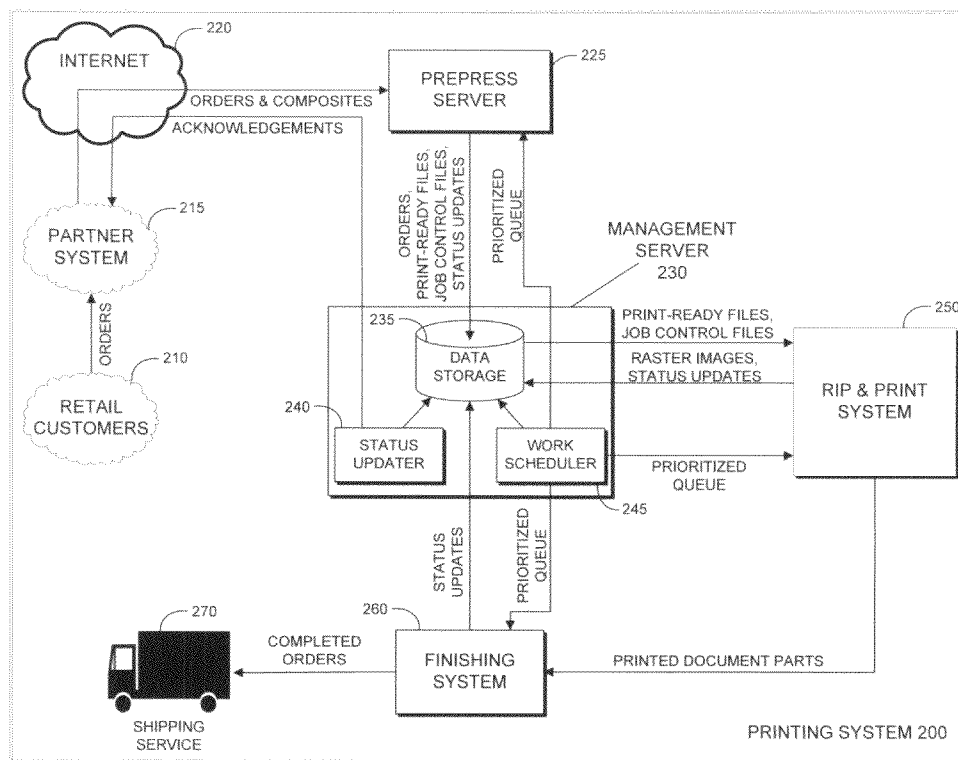
Assistant Examiner — Allen H Nguyen

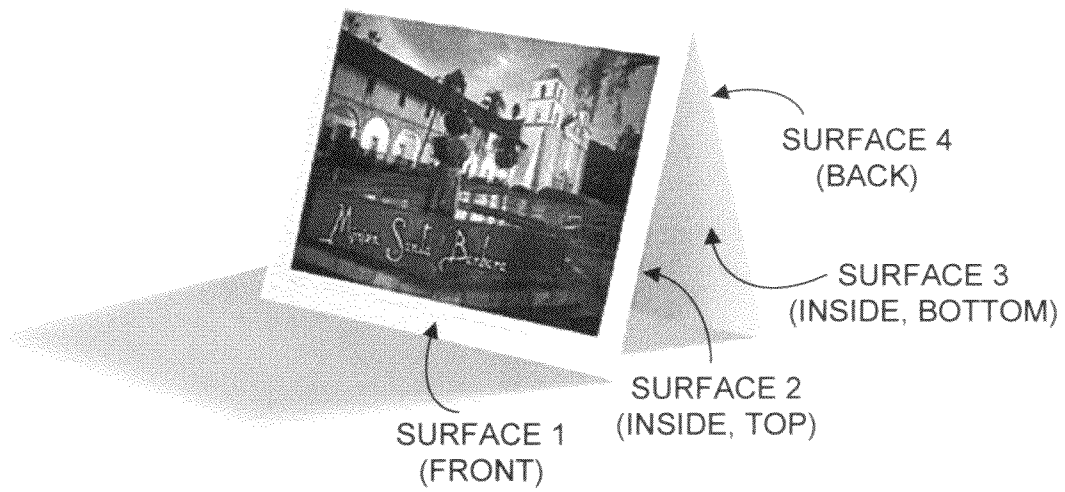
(74) Attorney, Agent, or Firm — Soquel Group LLC

(57) **ABSTRACT**

A method for end-to-end printing, including entering into service level agreements with each of a plurality of partner systems that enable customers to order personalized print products, wherein a service level agreement designates maximum delays for finishing customer print orders, receiving customer print orders forwarded from the plurality of partner systems, each print order specifying at least one personalized print product, serializing the print orders into a plurality of work items, each work item corresponding to a part of a personalized print product that is to be printed on printable material, dynamically assigning priorities to the work items, dynamically advancing the work items through a plurality of print processing states, wherein each processing state processes work items in order of their priorities.

**13 Claims, 17 Drawing Sheets**





**FIG. 1**

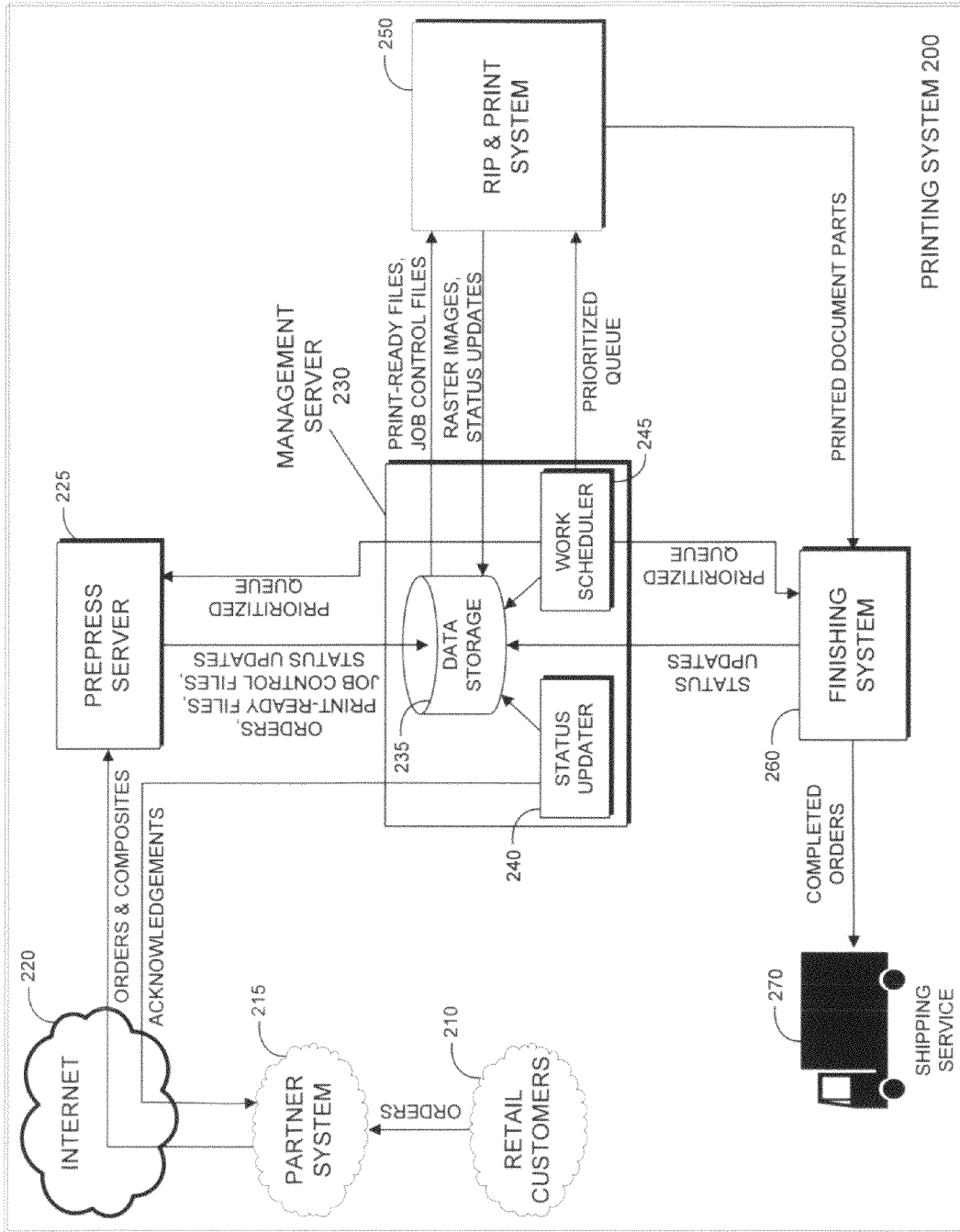


FIG. 2



FIG. 3

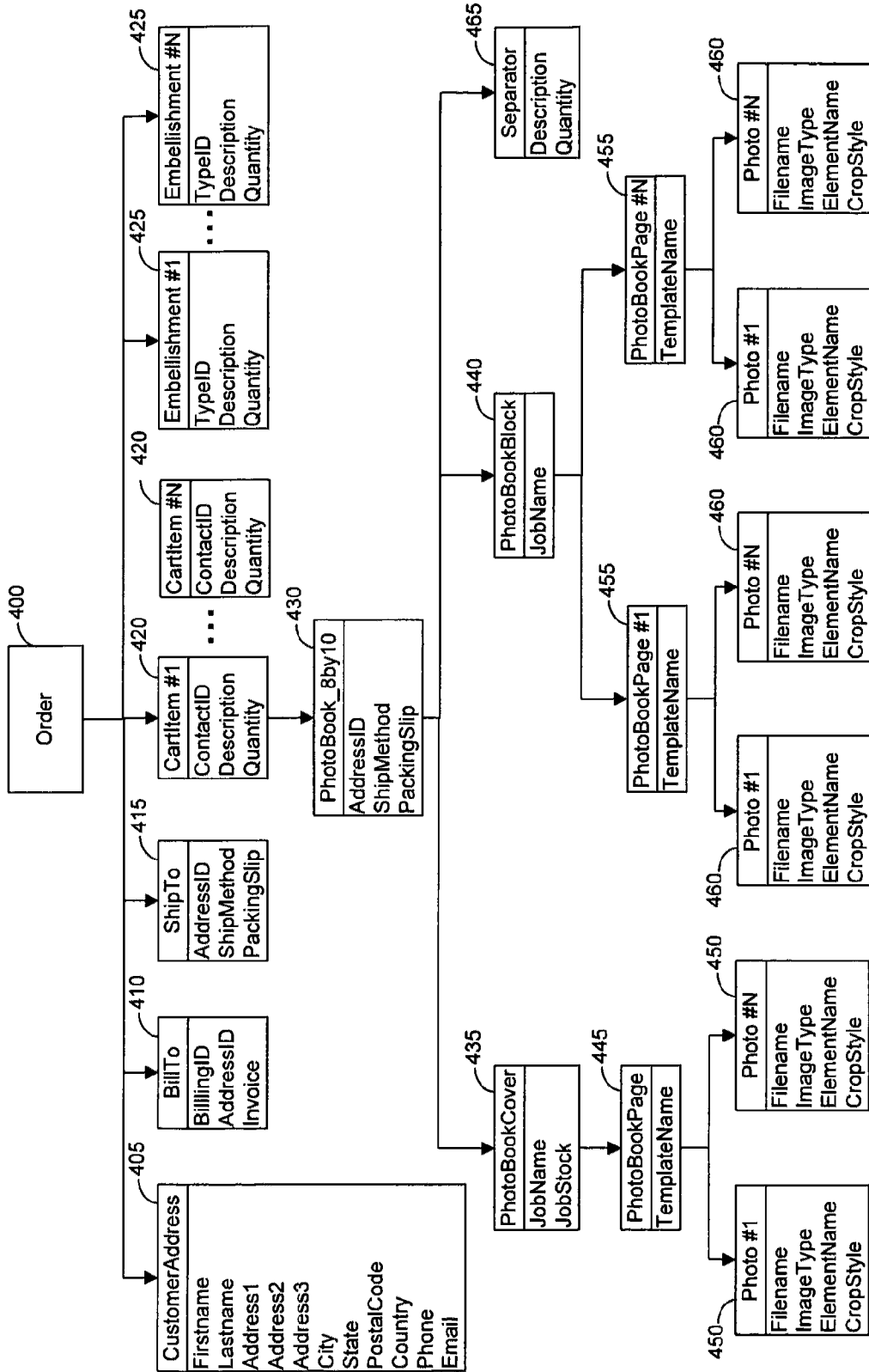


FIG. 4

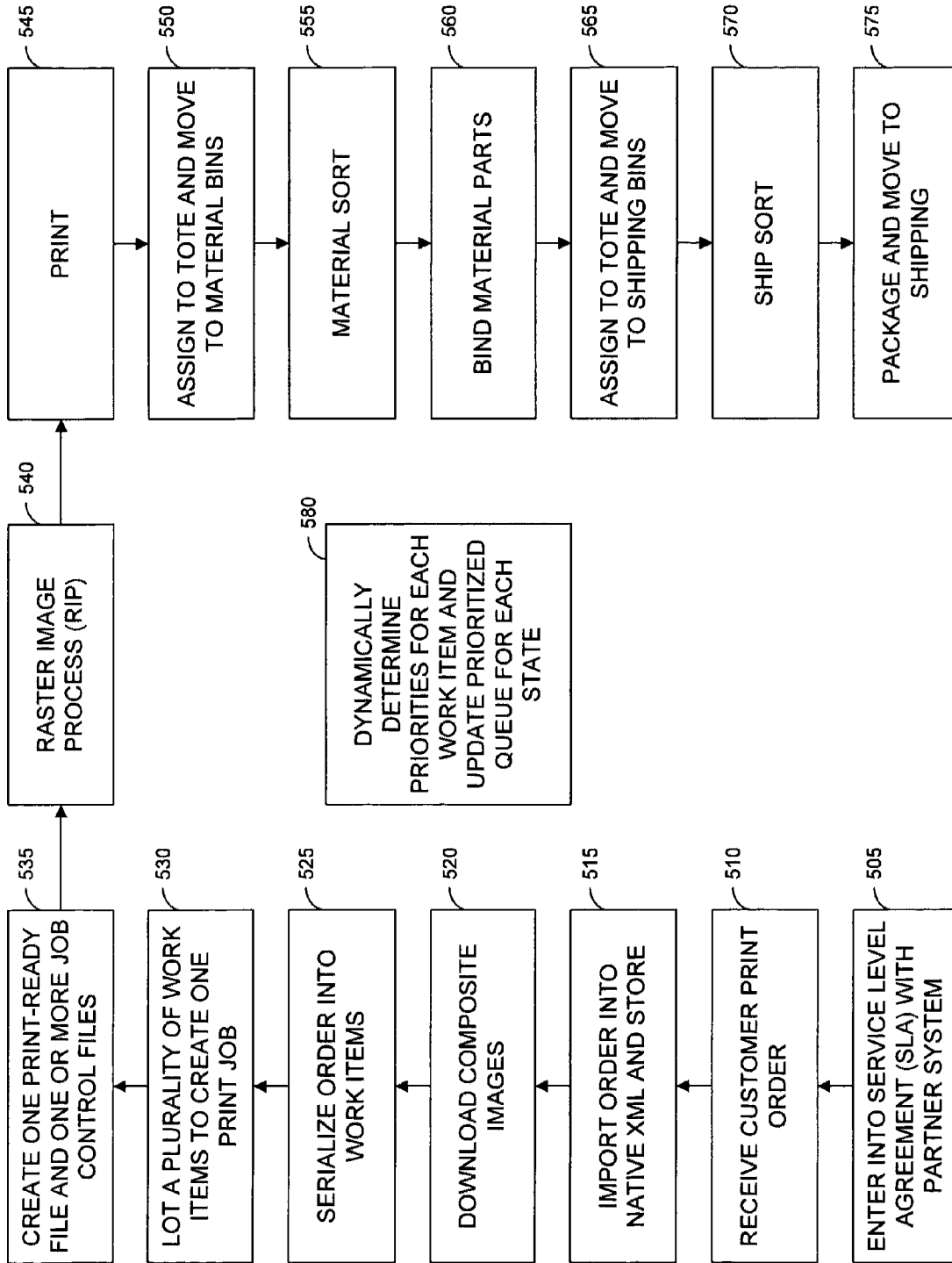


FIG. 5

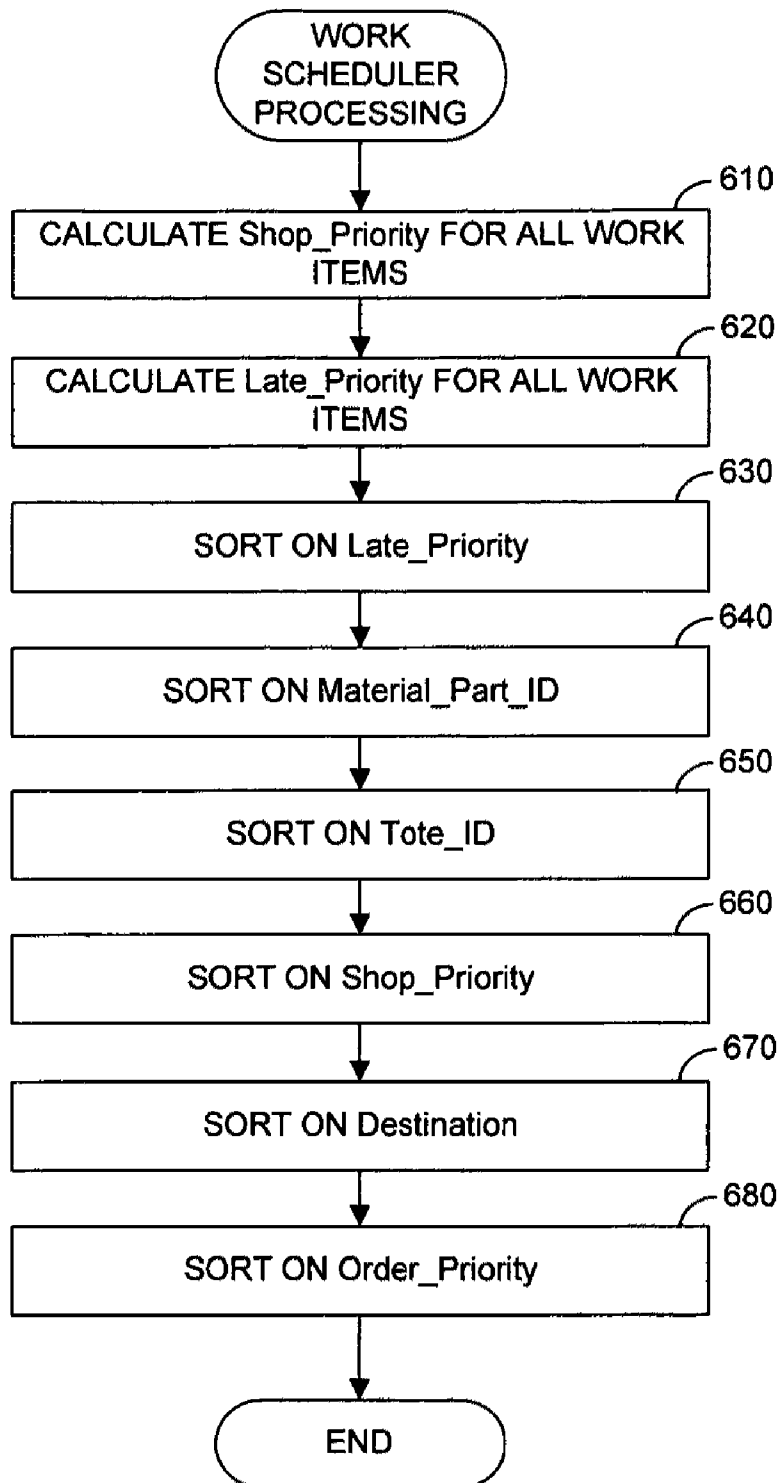


FIG. 6

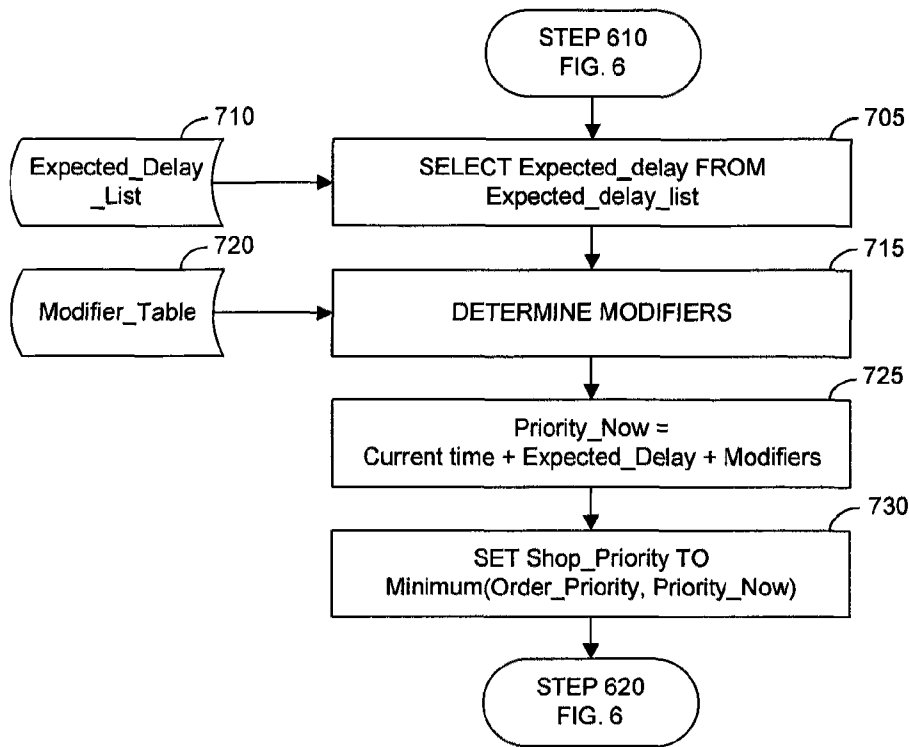


FIG. 7A

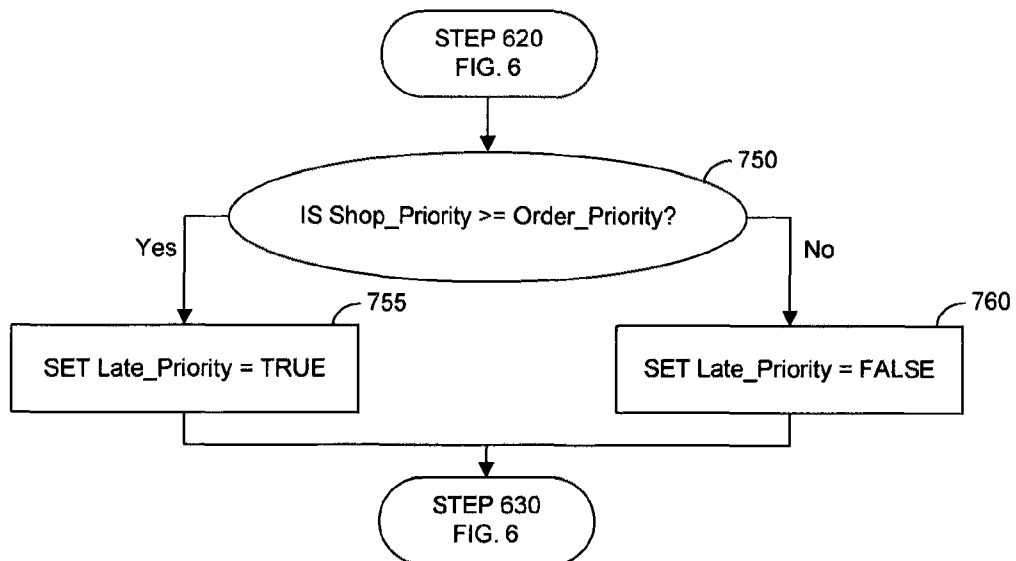


FIG. 7B



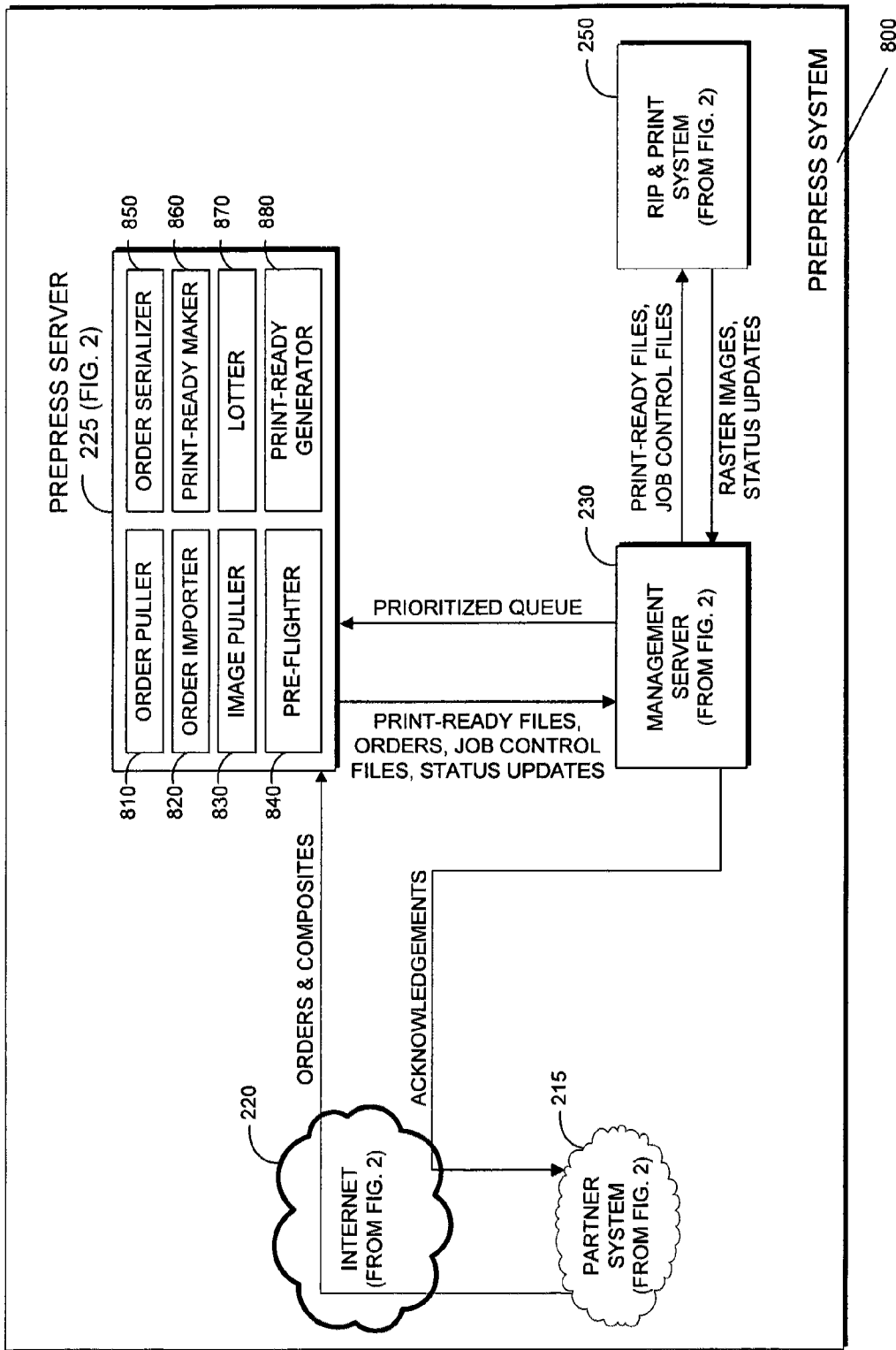


FIG. 8

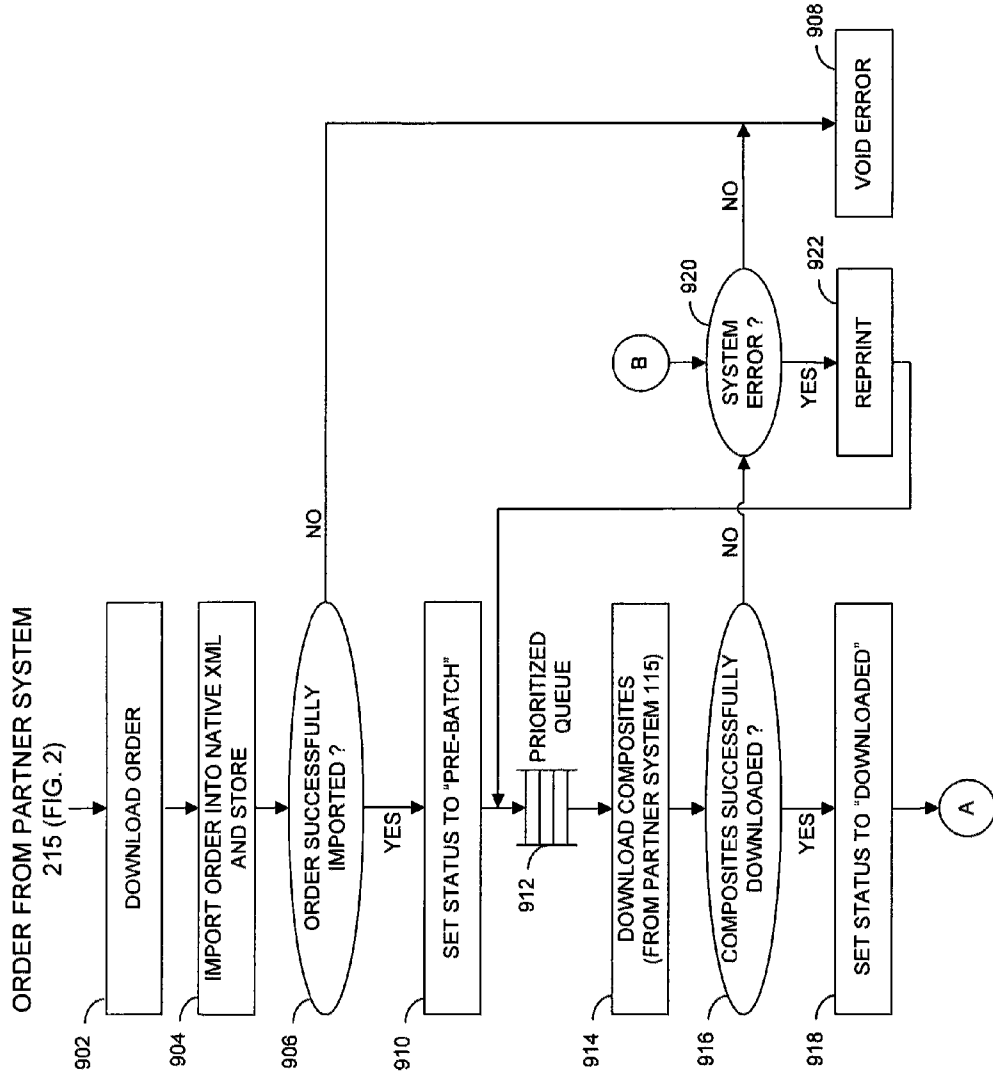


FIG. 9A

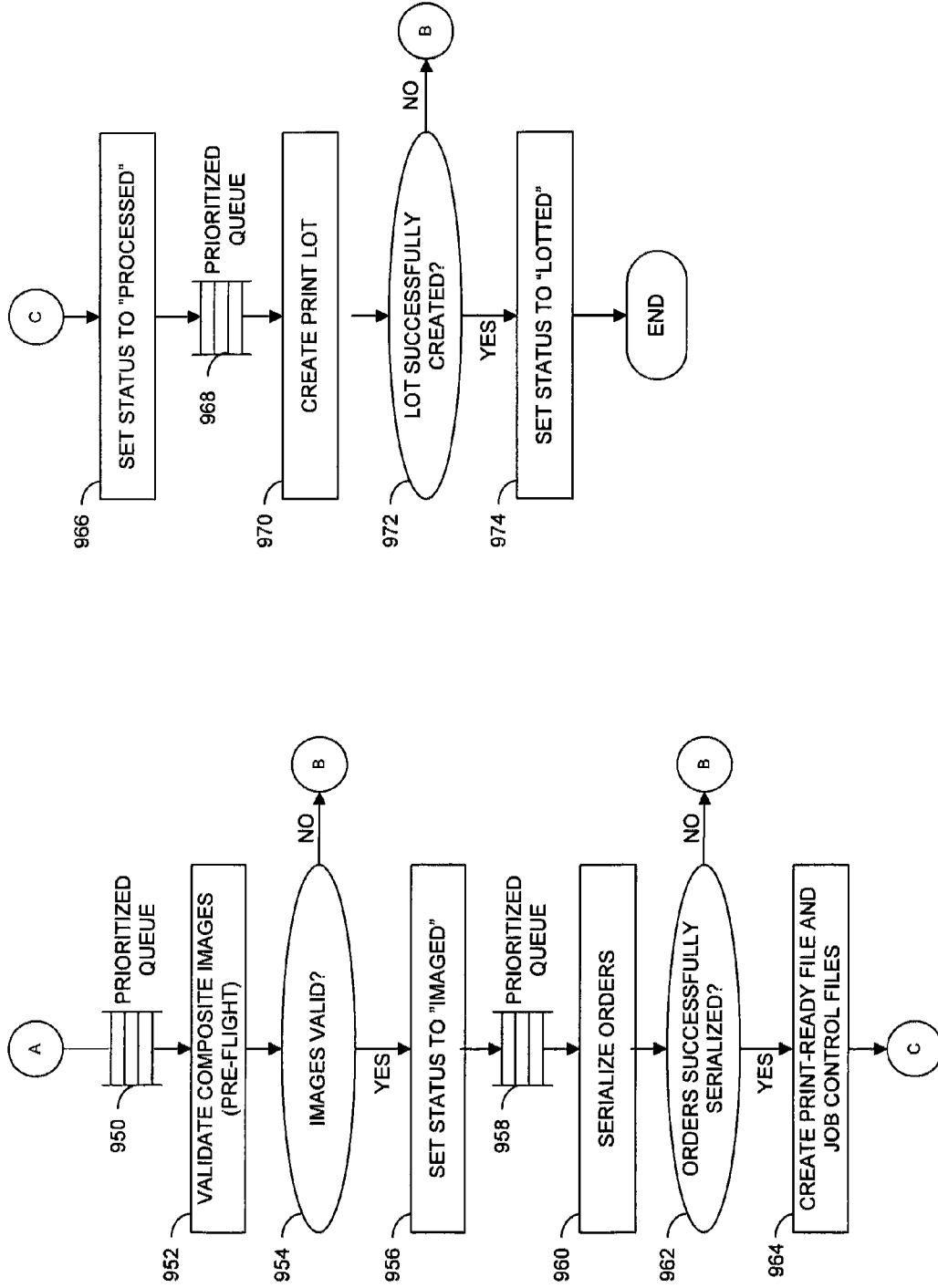


FIG. 9B

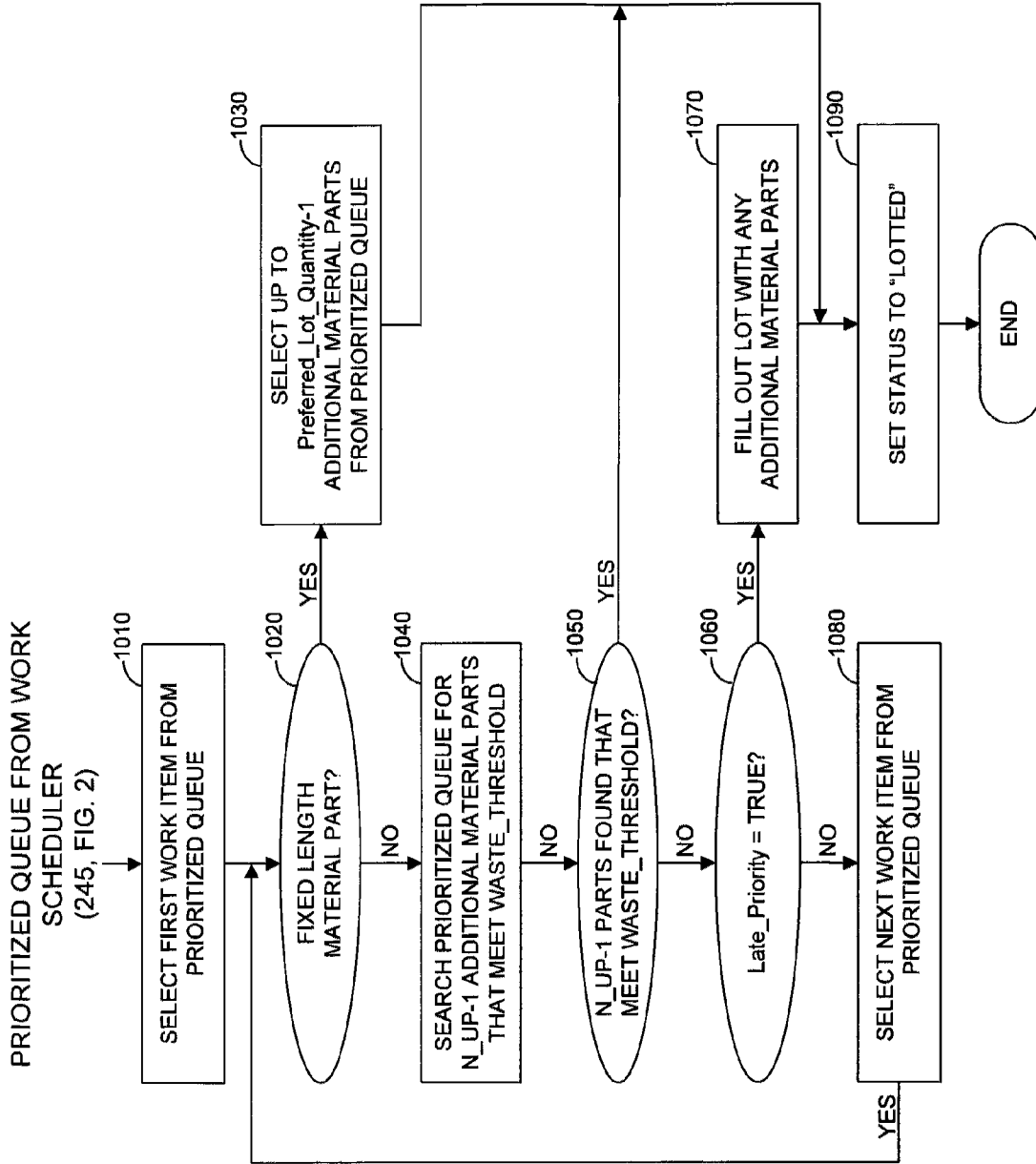


FIG. 10

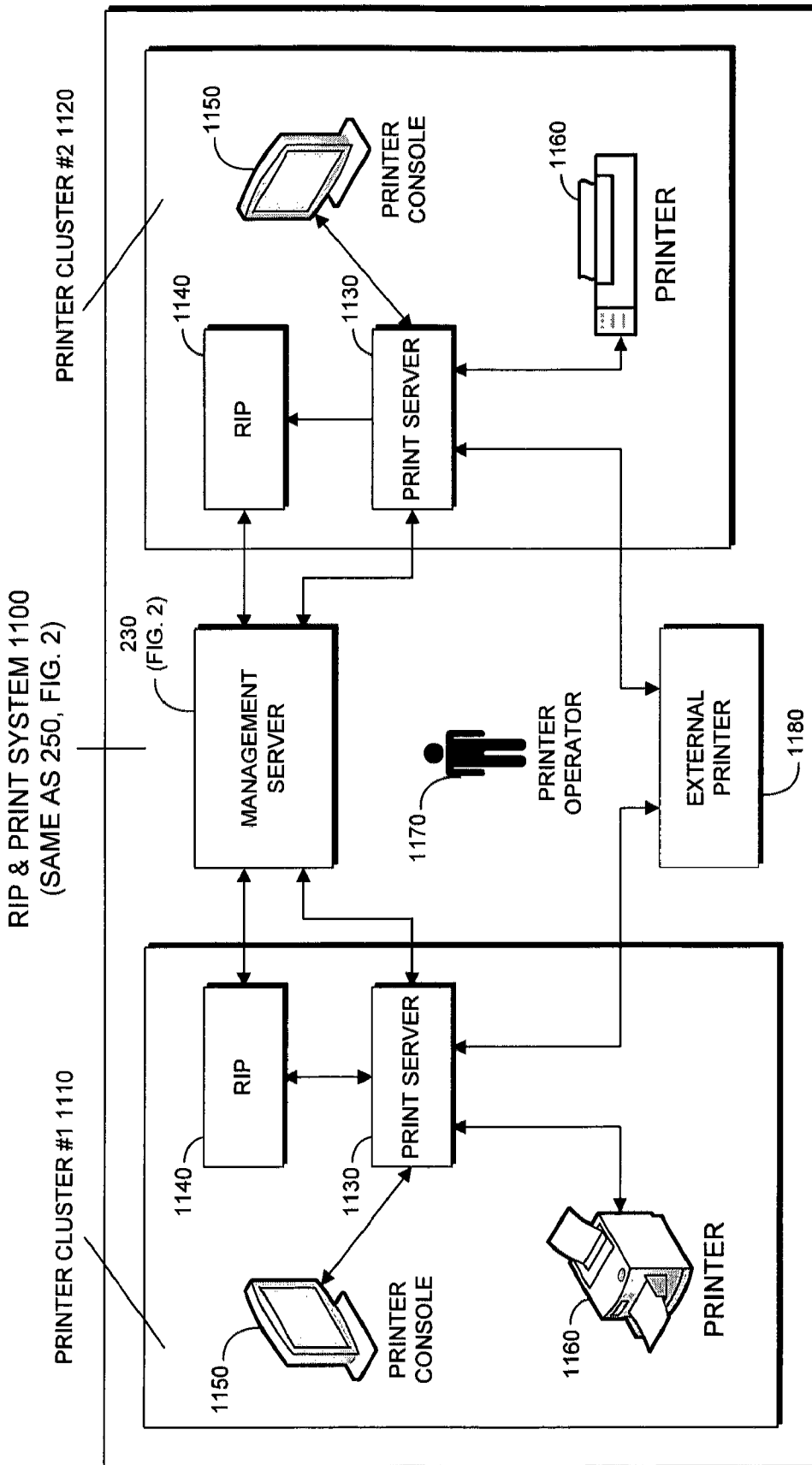


FIG. 11

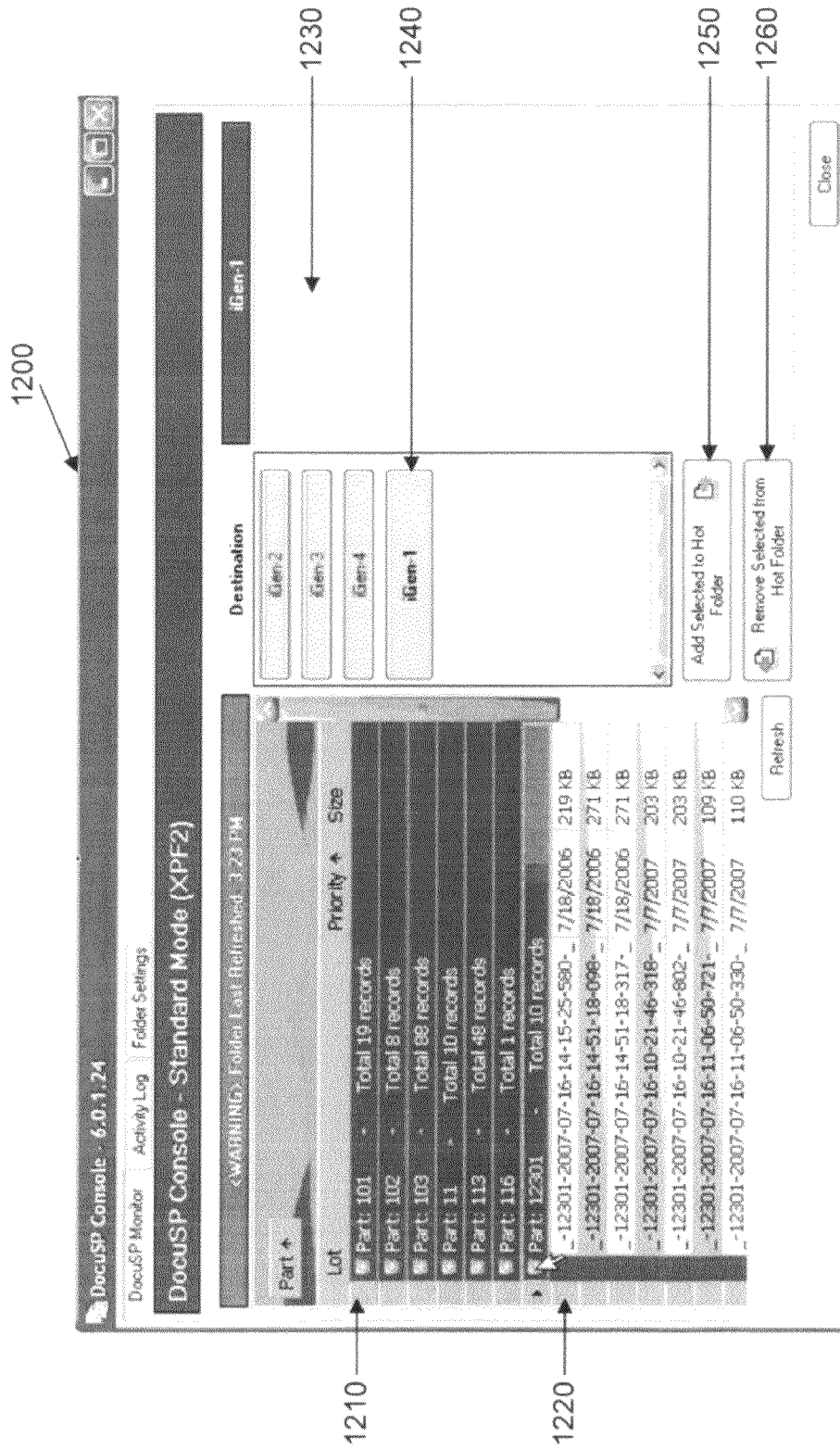


FIG. 12

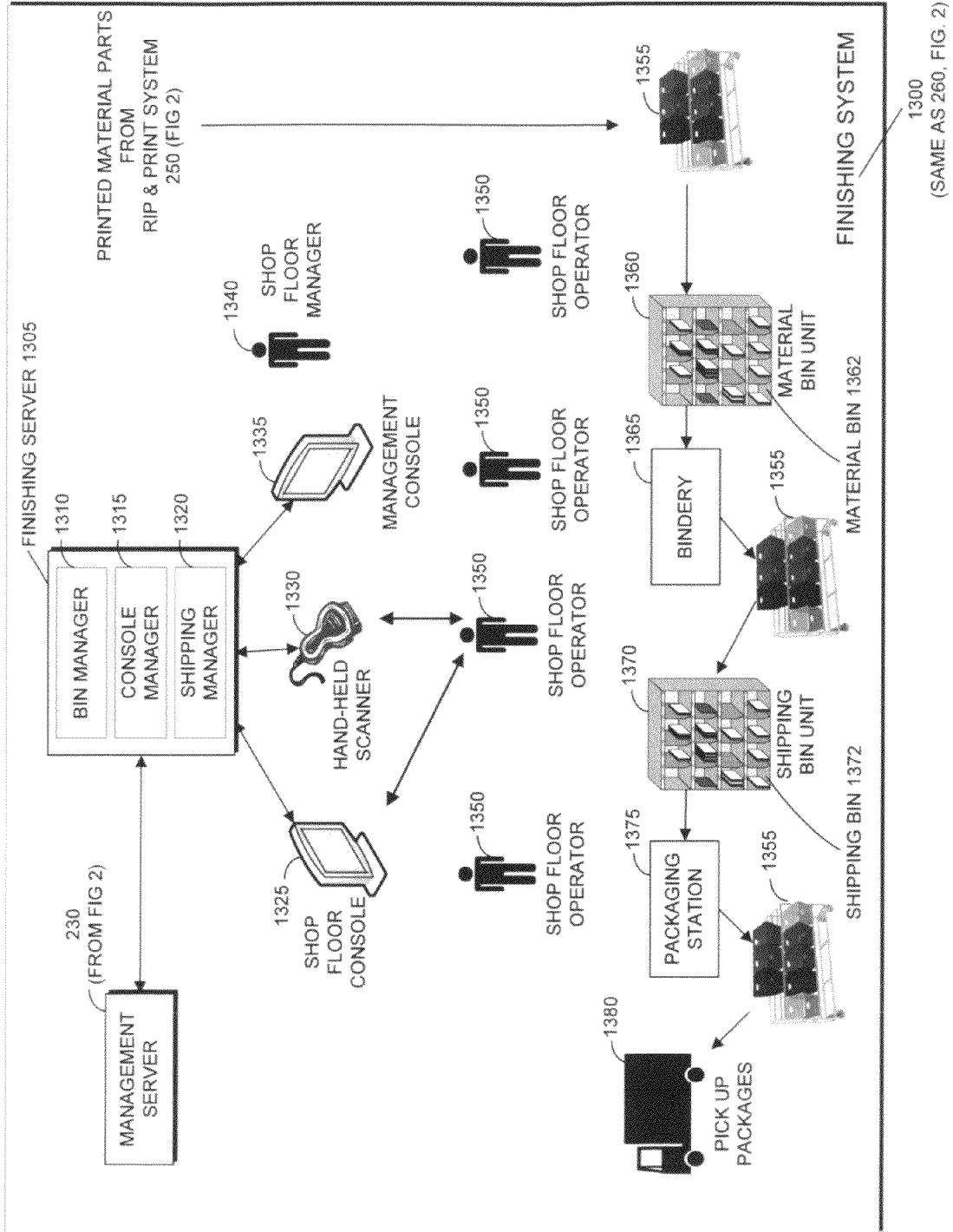


FIG. 13

(SAME AS 260, FIG. 2)

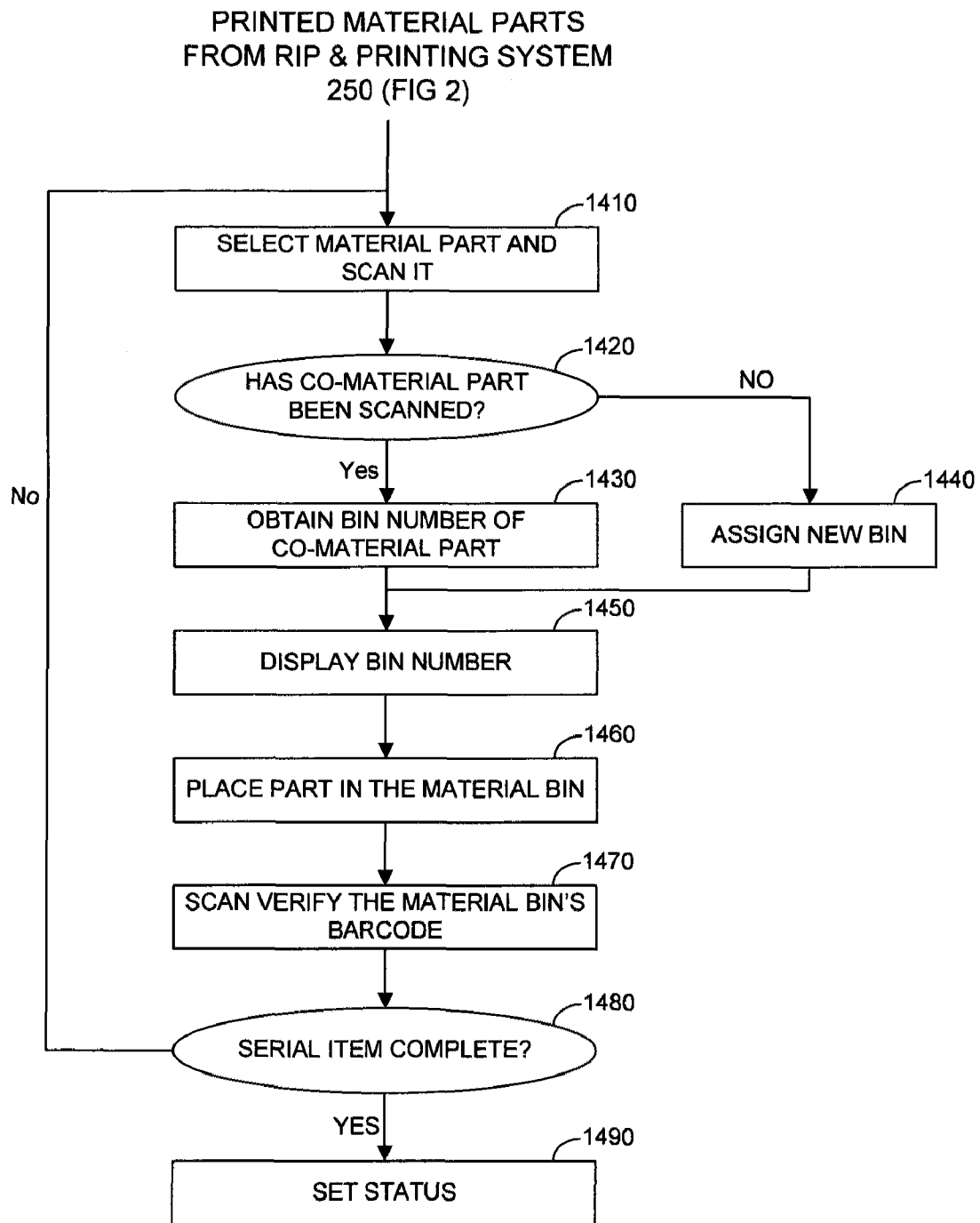


FIG. 14



Scan to Reprint Close

1510 → Barcode

1520 → Scan Type

- Entire Lot
- Single Item
- Entire Lot with Scan Verification

1530 →  Apply Reason Code

Last Items Updated

ORDERID	ORDERLINEITEMID	ORDERSERIAL	STATUS	DESC	LOTDESC
1181111	1371689	224833	VOIDED		116 2007 07 15 23 14 13 551

1540 →

FIG. 15

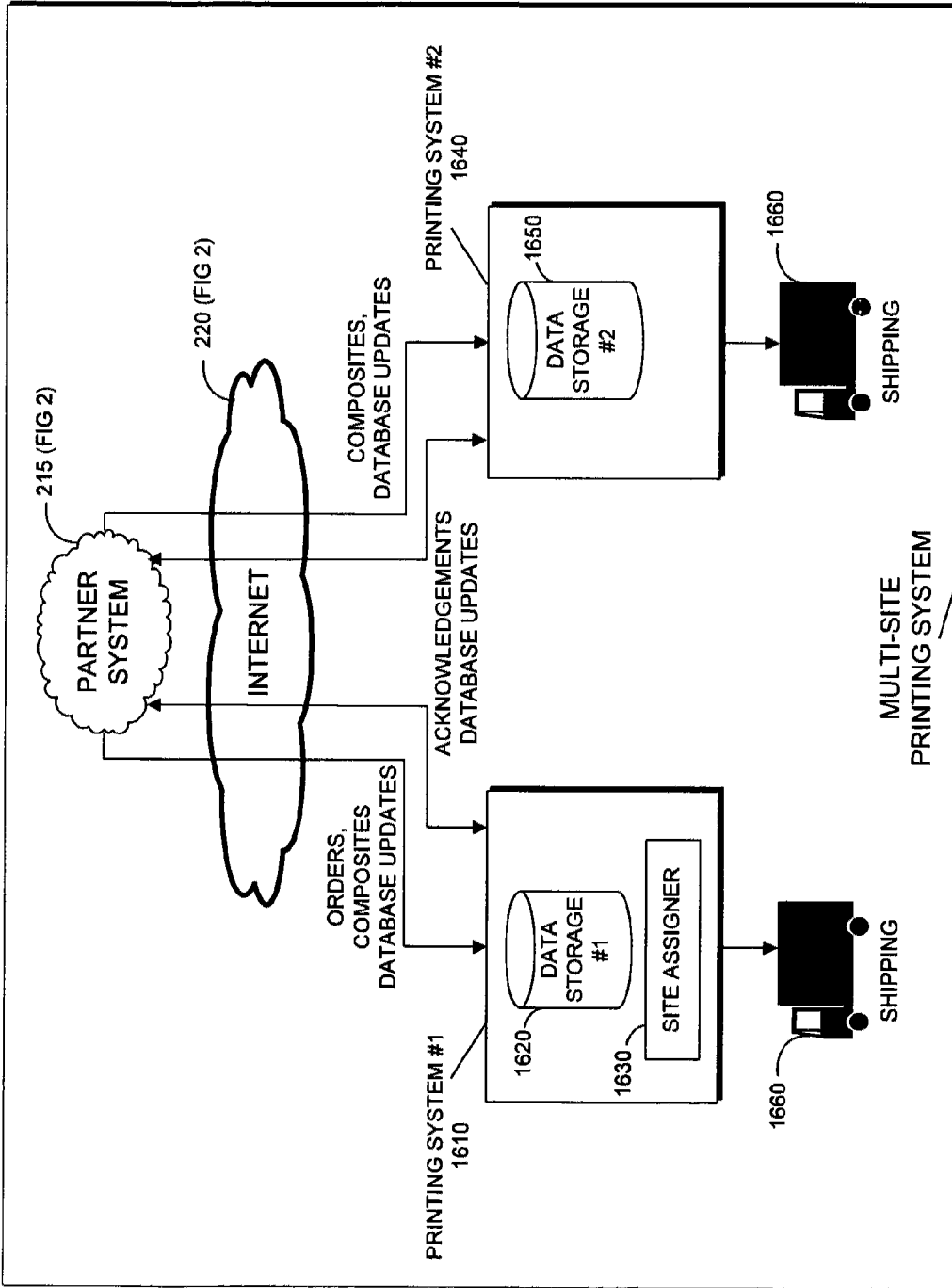


FIG. 16

## MULTIPRODUCT PRINTING WORKFLOW SYSTEM WITH DYNAMIC SCHEDULING

### FIELD OF THE INVENTION

The present invention relates to a commercial printing system that provides scheduling so as to meet service level agreement requirements.

### BACKGROUND OF THE INVENTION

Popular web sites now enable customers to create and order a variety of personalized print products, including inter alia calendars, greetings cards, notepads, and photo books. Customers insert their own text and photos within templates provided on the web sites and in retail stores, and fulfillers print the resulting photo products. Such web sites include www.snapfish.com operated by Hewlett-Packard Company of Palo Alto, Calif., www.shutterfly.com operated by Shutterfly, Inc. of Redwood City, Calif. and www.blurb.com operated by Blurb, Inc. of San Francisco, Calif. Such retailers include Walmart and Walgreens.

Orders for personalized print products typically involve low quantities. Often customers order only a single copy of a book or calendar. As such, a fulfiller must be able to print and manage a very large number of very small jobs. Moreover, the jobs themselves often include a variety of component parts. For example, a book generally includes a dust cover, a spine and the pages themselves.

Managing and monitoring orders for large numbers of personalized print products as they proceed through a print workflow moving from prepress to press to postpress is very complex. Such complexity stems from many factors, including job ingest, job scheduling, coordination of physical component print parts on the shop floor, product dispatch, inventory control, machine maintenance, failover protection, product defects, customer returns, irregular seasonal volume, and much more.

Conventional short run printing systems enable printing of small quantities of a document. Conventional variable data printing systems enable changes in text on a per document basis. For example, multiple copies of a letter can be printed, and a name can be changed for each copy.

However, conventional printing systems are not optimized for the complexity of the massive volume and diversity of small individual print jobs characterized by online printing systems that cater to consumers and small businesses. There is thus a need for a method and system to efficiently manage and monitor the fulfillment printing workflow, in order to guarantee that an order consisting of a plurality of print products is printed, bound and shipped within a prescribed deadline.

### SUMMARY OF THE DESCRIPTION

The present invention concerns a system and method for monitoring and controlling an end-to-end printing workflow for printing a wide diversity of variable length short run personalized print products. The end-to-end printing workflow includes (i) prepress stages that ingest customer print orders for books, greetings cards, playing cards, notepads, stationary, stickers, calendars, magnets, and other such merchandise, and generate a series of print jobs therefrom; (ii) raster image processing and print stages that rasterize the print jobs and print them on appropriate printers; and (iii) postpress stages that gather and bind various product parts, package them, and prepare them for shipping to customers.

In accordance with an embodiment of the present invention, customer orders are transmitted to a printing system via partners, such as web sites and retail stores. The printing system has an agreement with each partner, referred to as a service level agreement (SLA), which stipulates the terms and conditions of the service provided by the printing system to the partner. Terms of the SLA include legal terms such as indemnifications, and pricing terms. In addition, the SLA includes a maximum time delay from the time a customer order is entered into the printing system until the order is finished and ready for shipping.

In accordance with an embodiment of the present invention, the end-to-end printing workflow is represented as a plurality of processing states through which a print order advances as it moves through the printing system. An order serializer decomposes printer orders into a plurality of work items. A work scheduler assigns priorities to each work item waiting in queue at a processing state, and the work item with the highest priority is processed first. The work scheduler assigns priorities in such a way that each print job is finished within the deadline prescribed by the SLA with the partner that transmitted the print job. Furthermore, the work scheduler assigns priorities in such a way as to maximize efficiency and profitability. Some print jobs include multiple parts, such as a book that includes a cover, a spine and book pages, and the work scheduler assigns priorities to parts in an intelligent way so that all parts of a print product are ready for postpress processing in time to be finished within the deadline.

In accordance with an embodiment of the present invention, work items are lotted; i.e., combined in a single lot for printing together. Additionally, work items are imposed so that multiple surfaces are printed on a single large sheet of paper. In a business environment typified by many diverse small print orders, imposition and lotting achieve efficiency in avoiding wastage of paper, efficiency in use of printers and other resources, and efficiency in timely completion of print orders.

The present invention also concerns binning of parts of print orders, such as book covers and book pages, so that parts corresponding to the same print order can easily be gathered together, and so that the locations of parts can be tracked on the shop floor.

The present invention also includes the ability to outsource processing at various stages of the overall workflow, and the ability to coordinate multiple printing systems housed in different locations.

It will thus be appreciated by those skilled in the art that the present invention provides for comprehensive and optimized management and monitoring of an end-to-end printing workflow for complex business environments with large numbers of diverse small run print orders. The present invention also provides for control of work priorities at various stages of the workflow in order to meet contractual deadlines for finishing orders.

### BRIEF DESCRIPTION OF THE DRAWINGS

The subject invention will be more fully understood and appreciated from the following detailed description, taken in conjunction with the drawings in which:

FIG. 1 is a depiction of a greeting card with four surfaces, in accordance with an embodiment of the subject invention;

FIG. 2 is a simplified block diagram of a printing system, in accordance with an embodiment of the subject invention;

FIG. 3 is an exemplary web user interface used by a retail customer to create a calendar, in accordance with an embodiment of the subject invention;

FIG. 4 is a schematic description of a simplified order of a photo book, in accordance with an embodiment of the subject invention;

FIG. 5 is a simplified flowchart of an overall method for a printing system, in accordance with an embodiment of the present invention;

FIG. 6 is a flow diagram describing the processing steps performed by a work scheduler to calculate the priorities of work items, in accordance with an embodiment of the subject invention.

FIG. 7A is a flow diagram describing the processing steps performed by a work scheduler to compute the Shop\_Priority attribute for a work item, in accordance with an embodiment of the subject invention.

FIG. 7B is a flow diagram describing the processing steps performed by a work scheduler to calculate the Late\_Priority attribute for a work item, in accordance with an embodiment of the subject invention.

FIG. 8 is a simplified block diagram of a prepress system, in accordance with an embodiment of the subject invention.

FIG. 9A is a flow diagram illustrating the initial processing steps performed by a prepress server, in accordance with an embodiment of the subject invention;

FIG. 9B is a flow diagram illustrating the final processing steps performed by a prepress server, in accordance with an embodiment of the subject invention;

FIG. 10 is a flow diagram that illustrates the processing steps performed by a prepress server to select material parts for a print lot, in accordance with an embodiment of the subject invention.

FIG. 11 is a simplified block diagram of a RIP and print system, in accordance with an embodiment of the subject invention;

FIG. 12 is an illustrative screen capture from a printer console, in accordance with an embodiment of the subject invention;

FIG. 13 is a simplified block diagram of a finishing system, in accordance with an embodiment of the subject invention;

FIG. 14 is a simplified flow diagram that illustrates the steps performed in material sorting, in accordance with an embodiment of the subject invention;

FIG. 15 is an illustrative screen capture from a shop floor console, in accordance with an embodiment of the subject invention; and

FIG. 16 is a simplified block diagram of a multi-site printing system, in accordance with an embodiment of the subject invention.

### DETAILED DESCRIPTION

The present invention concerns a printing system that accepts orders from business partners and manages a print workflow to enable the printing system to meet service level agreements (SLAs). The printing system is operated by a printing system provider. Print orders flow into the system from one or more partners, where a partner is a company or organization that operates a system, referred to as a “partner system,” that receives print orders from retail customers. The partner system can be inter alia a web-based system or a retail store. For each partner there is a service level agreement (“SLA”) between the printing system provider and the partner that defines inter alia the products that the printing system can accept and print, and the maximum delay to be incurred in printing each product. The present invention relates to the ability of the printing system to meet the SLA-defined maximum delay requirements.

For purposes of clarity, a print order, or simply an “order,” includes one or more copies of one or more print products. An order is equivalent to a shopping cart in an ecommerce system. The order can have multiple line items where each line item designates a unique product to be printed. In addition, an order may include one or more embellishments. An embellishment is an item, such as a coupon, that may not be explicitly ordered by a retail customer but which is added to one or more of the packages shipped to the recipient of the order. Embellishments may include inter alia a coupon, a free sample, or promotional literature. A maximum allowed delay incurred in printing a product, referred to as “Max\_Delay,” is defined as an upper limit on the amount of time spent from the moment that a print order for a printed product is accepted into the print system until the moment the printed product is picked up by a shipping service. The Max\_Delay includes the time to perform various prepress steps, then to raster image process (“RIP”) and print the document, and then to finish the document. The finishing process includes binding, packaging and printing a packing slip and a mailing label.

A line item, also known as a stock keeping unit (SKU) or a part, refers to a single product. Example line items include photo books, notepads, and greeting cards. A line item has attributes including inter alia a quantity and a number of pages. A line item with quantity greater than one, i.e., multiple copies of the same product, can be shipped to multiple recipients. For example, if four copies of a calendar are printed, three may be shipped to one recipient and one to a different recipient. A line item is composed of one or more “material parts.” For example, a photo book consists of a cover, a spine and book pages, referred to as “book block”. Each of the components (e.g. cover, spine, book block) of a line item or product is referred to as a “material part.” Some material parts are printed items, e.g. greetings cards and calendars; other material parts are non-printed items such as a velum separator page or a red cover.

Reference is now made to FIG. 1 which is a depiction of a greeting card with four surfaces, in accordance with an embodiment of the subject invention. Generally, each product to be printed consists of one or more “surfaces” where a surface is defined as a printed side of a page. For example, a page in a photo book has two surfaces, front and back, while a greeting card has four surfaces. Thus the greeting card illustrated in FIG. 1 has four surfaces; namely, front, inside top, inside bottom, and back.

In one embodiment, one digital image, referred to as a “composite image” or “composite,” is stored by the partner for each surface. The composite image exactly represents the surface to be printed. The use of composite images between the partner and the printing system allows the printing system to provide WYSIWG (what you see is what you get) printing. In other words, the document that the customer sees on their display appears identical to the printed product that they receive in the mail. In order to achieve WYSIWG printing, the composite is typically an image that covers the entire surface and that is reproduced as precisely as possible by the subject invention.

Reference is now made to FIG. 2, a simplified block diagram of a printing system 200, in accordance with an embodiment of the subject invention. Retail customers 210 place orders with partner system 215. An order may be placed inter alia using a web interface or may be made in a retail store. An order may include multiple products, or “line items,” and multiple copies of each line item. Line items are printed items such as calendars, notepads, and books that typically include content supplied by a retail customer. For example, a calendar may include one photo for each month of the year provided by

the retail customer; and a notepad may include the name of the retail customer. An example of a web user interface for creating a calendar is illustrated in FIG. 3.

An order is typically stored in a computer file. An order can be represented inter alia as a text file, as a coded binary file, as an HTML formatted file, or as an XML formatted file. In one embodiment, an order is represented by a single XML file with a schema defined by the print system. This schema is referred to as the “native XML format” of the print service. In one embodiment, a single XML file can contain multiple orders.

In one embodiment, partner system 215 represents orders using a proprietary file format. In this case, printing system 200 transforms the proprietary format into its native XML format.

Reference is now made to FIG. 3, an exemplary web user interface used by a retail customer to create a calendar, in accordance with an embodiment of the subject invention. FIG. 3 is displayed after a customer selects calendar as the product type he/she wishes to create. The customer selects the month he/she wishes to create 310. The customer can change the default page layout 320. The customer can add text and/or photos to individual dates 330. The customer selects photos from a gallery of photos that is displayed at the bottom of the screen 340. The exemplary user interface depicted in FIG. 3 shows two surfaces that would be visible for the month of August 2007: on the left of the screen is a single, large, user-supplied photo; and the right side of the screen shows a graphical layout for the month of August, which includes two small user-supplied photos and several textual comments.

Reference is now made to FIG. 4, a schematic description of a simplified order of a photo book, in accordance with an embodiment of the subject invention. An order 400 includes CustomerAddress information 405, BillTo information 410, ShipTo information 415, one or more CartItems 420 and optionally or more Embellishments 425. It is noted that a CartItem is also referred to as a line item. Order 400 includes a single 8x10 inch photo book, referred to as PhotoBook\_8by10 430. Photo book 430 includes a PhotoBookCover 435, a PhotoBookBookBlock 440, and a NonPrintableMaterial 465. Typically, NonPrintableMaterial 465 is a velum separator page between the cover and the first page of book block. PhotoBookCover 435 includes a single PhotoBookPage 445, which may contain one or more photo 450 elements. PhotoBookBookBlock 440 includes one or more PhotoBookPage 455 elements. Each PhotoBookPage 455 includes one or more photo 460 elements.

In one embodiment, the format of each printed element, such as cover page and book block pages, is defined by a template that is commonly agreed to between the partner and the printing system provider. Thus, in FIG. 4 the photo book cover template is specified by a TemplateName attribute within PhotoBookPage 445. Similarly, the template of each book block page is specified by the TemplateName attribute within PhotoBookPage 455. Use of said commonly agreed to templates ensures that each line item can be processed by the printing system. Also, when using said commonly agreed to templates only information not defined by the template need be included in the order. For example, a calendar page template might define the position of textual, graphical and user-supplied photos for a cover and for each month of the year. Since this formatting information is defined in the template and stored by the printing system it doesn't have to be included in the order.

In one embodiment, PhotoBookPage 445 contains multiple photos, indicated by Photo #1 450, and Photo #N 450. The number of photos and size and location of each photo are specified by the template referred to by the TemplateName attribute within PhotoBookPage 455. Each photo can be inter alia supplied by the customer, selected by the customer from a list of photos presented by the partner, or supplied by the partner with no input from the customer.

In one embodiment, each surface is provided by the partner as a composite image that includes all required information to print one surface. In this embodiment, each PhotoBookPage 445 element includes a single photo 450 element whose filename attribute references a single composite image.

The XML code for a simplified, exemplary, order for a photo book that follows the schema depicted in FIG. 4 is provided in LISTING 1 at the end of this specification. The order includes a single line item, an 8by10 photo book. The 8by10 photo book includes a cover, 2 book block pages and a velum separator page. Due to the use of templates, formatting information is not required in the XML order.

Referring back to FIG. 2, in one embodiment, partner system 215 receives an order from retail customer 210 and transforms it into the native XML of printing system 200 before providing it via the Internet 220 to printing system 200. In another embodiment, partner system 215 provides the order to printing system 200 in the proprietary format of partner system 215, and printing system 200 transcodes the order into its native XML.

A prepress server 225 downloads orders from partner system 215. Prepress server 225 “serializes” each order. When an order is serialized, each line item in the order is decomposed into one or more material parts. Each printed material part is assigned a unique serial number. For example, in a photo book the cover and the book block would be assigned two different serial numbers. Each serialized item can be individually managed and tracked. Further, line items with quantity greater than one are individually serialized. Non-printed material parts are not assigned serial numbers since they are not customized; only a part number is necessary to uniquely denote a non-printed material part. Each serialized material part is processed in a series of steps, first by prepress server 225, then by a RIP and print system 250 and finally by a finishing system 260.

It is pointed out that in some cases a processing step is performed on an order, in some cases on a single material part and in some cases on multiple material parts. For purposes of clarity, the term “work item” is used to refer to a data structure that defines the atomic or most granular level of processing performed at a particular processing step in the printing workflow, regardless of whether it is performed on an order or on one or more material parts.

Each work item has a state associated therewith. TABLE 1 lists the states that a work item can be in, in accordance with an embodiment of the present invention. Upon completion of certain processing steps, the state associated with the work item is changed to a new state. This is referred to as updating the work item's state. A work item's state determines what processing step will next be performed on it.

TABLE 1

Processing States			
ID	State Name	Where Occurs	Short Description
1	Hold	Prepress	The work item is on hold for a non system failure, such as missing images or corrupt images, also duplicate orders from the partners will be parked in hold for manual release.
2	Error	Prepress	The work item has failed to process because of a system failure - the printing system will automatically re-process the work item
3	Pending-Order-Import	Prepress	Order has been received from a partner and is available for processing and import into data storage.
4	Pre-Order_Import-Error	Prepress	An error occurred while processing an order. The order cannot be imported into data storage.
5	Pre-Batch	Prepress	The order has been successfully accepted into the system
6	Reprint	Prepress	A temporary place for work items that were mishandled and need reprinting
7	Downloaded	Prepress	All composite images within the order have been downloaded or moved to data storage
8	Imaged	Prepress	All composite images within the order have been verified.
9	Processed	Prepress	The order has been serialized into work items or serial items and is ready for lotting.
10	Lotted	Prepress	The serial item has been grouped into a lot. The lot is ready for raster image processing.
11	Imported	RIP & Print	The lot has been accepted by the raster image processor (RIP).
12	Ready-to-Print	RIP & Print	The lot has been ripped and is ready for press
13	Moved-to-Press	RIP & Print	The lot has been moved to a press for printing
14	Imported-to-Press	RIP & Print	The printing press has accepted the lot for printing
15	Printed	RIP & Print	The lot has been printed
16	Bindery	Finishing	The serial item is in the bindery
17	Bound	Finishing	The serial item is bound and ready for sorting and fulfillment
18	Ready-to-Ship	Finishing	The serial item is sorted and ready to be packaged
19	Packaged	Finishing	The serial item has been placed into a package for shipping
20	Shipped	Finishing	The serial item has been shipped
21	Voided	Finishing	The serial item has been voided

A management server **230** performs tasks that are common to multiple processing steps including work schedule management performed by a work scheduler **245**, communication of status to partner **215**, performed by a status updater **240**, and data storage and management performed by a data storage **235**. It will be appreciated by those skilled in the art that management server **230** may be a separate computer system, or it may be configured as hardware or software running inside of prepress server **225**, print server **1110** (described with reference to FIG. **11**), or finishing server **1305** (described with reference to FIG. **13**). It will be further appreciated that management server **230** may be several computer systems, each configured to run one or more processes. For example, one management server **230** may run work scheduler **245** and status updater **240**, while another management server runs data storage **235**.

Data storage **235** includes a relational database management system (RDBMS) and physical storage. In addition, database management system may include network attached storage (NAS), which is data storage that can be connected directly to a computer network to provide centralized data access and storage for other network devices. For example, NAS would enable prepress server **225**, a print server **1110**, or a finishing server **1305** to directly store and share data.

Work scheduler **245** runs periodically as a background process on management server **230**. For each state listed in

TABLE 1, work scheduler **245** maintains a prioritized queue of all work items awaiting processing for each state. The prioritized queue for each state is stored in data storage **235**. When a work item changes state, work scheduler **245** moves the work item to the appropriate prioritized queue. For example, a work item that is being printed is in the prioritized queue for the “Imported-to-Press” state (with reference to TABLE 1). When the work item prints successfully, print server **1130** changes the state of said work item to “Printed.” When work scheduler **245** determines that said work item has changed state it moves the work item into the prioritized queue for the “Printed” state. It then recalculates the priorities for all work items in the prioritized queue for the “Printed” state.

In one embodiment, processing steps that correspond to the states Pre-batch, Imaged, Processed, operate at the order level. In one embodiment, the prioritized queue for each of these states lists the orders in first-in-first-out sequence.

Orders whose state is “Processed” state have been serialized into serial items, or material parts, each having a unique serial number. At this point, each Work item in the prioritized queue for the “Processed” state corresponds to a material part. Each work item includes inter alia the attributes listed in TABLE 2 below:

TABLE 2

Work Item Attributes	
Attribute Name	Description
Order_ID	The order that this work item pertains to.
Material_Part_ID	Material part identifier
Tote_ID	Identifier for the physical container that printed material parts are to be placed into
Late_Priority	BOOLEAN (TRUE, FALSE). The current estimate of whether the order to which the material part belongs will exceed SLA delay if any further delay is incurred in processing this material part. Described in greater detail relative to FIG. 6.
Shop_Priority	Date. The current estimate of the date at which the order to which the material part belongs, will complete processing. Described in greater detail relative to FIG. 6.
Destination	Shipping destination of the part to which this material part belongs.
Single_Part	BOOLEAN (TRUE, FALSE). Does this part comprise multiple material parts?
Destination_Part_Quantity	Quantity of parts being shipped to same destination.
Order_Priority	Date. Priority of the order, computed when the order is first accepted by the system.
N-up Priority	Check the waste percentage and determine if this print lot is able to be created. If it fails the test the print lot will not be created and all parts will be put back into the pool. (Applies to variable length parts only.)
State	State of the work item: completed, pending, error.

It is to be noted that not all of the work item attributes are necessary or available at each processing step. For example, the Tote\_ID attribute isn't assigned until a work item reaches the "Lotted" state.

Work scheduler **245** sorts the queue of work items using the attributes listed in TABLE 2 as sort keys to produce a prioritized queue. The order of the sort keys and the sorting algorithm itself may vary at each processing step.

Periodically, work scheduler **245** recalculates the late priority and shop priority attributes of each work item. It then sorts the prioritized queue to both maximize efficiency and minimize the risk that the time to process any of the orders dependent on work items in the prioritized queue will exceed the SLA-defined Max\_Delay period. The order of work items allows the processing module associated with each state to simply select the first work item in the prioritized queue and begin processing. Methods employed by work scheduler **245** to prioritize work items are further described with reference to FIG. 6.

Using a network data transfer protocol, a prepress server **225** downloads an order and any composite files included in the order from partner system **215** and then performs a series of processing steps to prepare the orders for printing. The output from prepress server **225** is one print-ready file and one or more job control files, which are stored in data storage **235**. Prepress server **225**, said print-ready file, and said job control files are described in greater detail relative to FIG. 8 and FIG. 9.

Status updater **240** runs as a background process on management server **230**. When status updater **240** detects that a work item has changed status, it updates the status of the corresponding order. In one embodiment, status information for an order is defined as the lowest status of each of the material parts that comprise the order where lowest status is defined by the Table 1 ID value. In one embodiment, status updater **240** notifies partner system **215** of status changes in the form of an email acknowledgement message. In one embodiment, when status updater **240** detects that a n order has changed status, it stores status information in an acknowledgement file on data storage **235**. Then, partner system **215**

can download the acknowledgement file at its convenience. In one embodiment, the acknowledgement file is in XML format. In another embodiment, status information for each order is provided using a SOAP web service. In this embodiment, partner system **215** requests information for a specific order using a SOAP request message and status updater **240** provides the current status of the order by sending a SOAP response message. The SOAP protocol is maintained by the World Wide Web Consortium (W3C) and the specification can be found at <http://www.w3.org/TR/soap/>.

When a work item reaches a state of "Lotted" (TABLE 1) it is assigned to RIP and print system **250**. The output from RIP and print system **250** is one or more printed material parts that serve as input to finishing system **260**. RIP and print system **250** is described in greater detail with reference to FIG. 11.

Printed material parts are then processed by a finishing system **260**. Most steps performed by finishing system **260** are performed by human operators. Finishing system **260** first binds printed parts into complete printed products. Finishing system **260** then prints a packing slip, packages the printed products with the packaging slip and affixes a mailing label onto the package. At this point, finishing system **260** assigns the final state of "Shipped" to the work item. When all work items that comprise an order have shipped the order is deemed to be complete. Finishing system **260** is described in greater detail with reference to FIG. 13.

Reference is now made to FIG. 5, which is a simplified flowchart of an overall method for a printing system, in accordance with an embodiment of the present invention. At Step **505** printing system **200** enters into a service level agreement (SLA) with a partner system **215**. Each SLA defines inter alia a maximum service delay, termed "Max\_Delay", for each print product that can be accepted by printing system **200**. At Step **510** once the SLA between the partner system and printing system is effective, printing system **200** commences to receive customer print orders from partner system **200**. At Step **515** printing system **200** imports an order into its native XML and stores it in data storage **235**.

11

The work performed by printing system 200 to process a print order is divided into a plurality of tasks which are referred to as work items. When the processing of a work item completes, a new state is associated with it. At Step 580 work scheduler 245 maintains a prioritized queue of work items for each state. Work scheduler 580 is depicted independently from the other steps in FIG. 5 because it executes on a scheduled basis independent of the other steps. Work scheduler 245 updates the prioritized queue for each state by calculating the priority of each work item within each prioritized queue. It then orders each prioritized queue using an algorithm that takes into account the updated priorities.

At Step 520 prepress server 225 downloads from partner system 215 one composite image for each image referenced in a print order. At Step 525 prepress server 225 serializes an order into a plurality of work items, also referred to as serial items, where each work item has a unique serial number. At Step 530 one or more work items are lotted to create a print job. At Step 535 prepress server 225 creates one or more print-ready files and one or more job control files that will control the printing process and print the print job. At Step 540 RIP and print system 250 raster image processes a print job and the resulting raster image file(s) is stored in data storage 235. At Step 545 RIP and print system 250 prints a print job. RIP and print system 250 is further described with reference to FIG. 11.

At Step 550, finishing system 260 assigns each work items, which references a single material part, to a tote and a shop floor operator places the material part inside the designated tote. When a tote is full shop floor operator moves the tote near to a designated material bin unit. At Step 555 shop floor operator material sorts the material parts from a tote into designated material bins. Material sorting is further described with reference to FIG. 14. At Step 560 the material parts are bound. At Step 565 finishing system 260 assigns the bound material parts to totes and a shop floor operator moves the totes near to a shipping bin unit. At Step 570 the bound material parts, also referred to as serial items, are ship sorted into designated shipping bins. At Step 575 the bound serial items are withdrawn from the shipping bins, packaged and moved to the shipping area. Finishing system 260 is further described with reference to FIG. 13.

Reference is now made to FIG. 6, which is a flow diagram describing the processing steps performed by work scheduler 245 (FIG. 2) to calculate the priorities of work items, in accordance with an embodiment of the subject invention. Work scheduler 245 executes periodically on management server 230. Work scheduler 245 maintains and periodically updates the order of a prioritized queue of work items for each state. Once an order reaches the "lotted" state, it has been serialized into material parts and the prioritized queue consists of an ordered list of material parts and attributes associated with each material part.

FIG. 6 describes one example method for ordering the prioritized queue of work items for a processing state. It will be appreciated by one skilled in the art that various methods may be used to prioritize the list of work items and that a different method may be used at each state.

At Step 610 the Shop\_Priority is calculated for all work items in the prioritized queue. The calculation of Shop\_Priority is described relative to FIG. 7A. At Step 620 the Late\_Priority attribute is calculated for all work items in the prioritized queue. The calculation of Late\_Priority is described relative to FIG. 7B.

At Step 630 the prioritized queue is sorted on the attribute Late\_Priority such that all material parts whose Late\_Priority attribute is set to TRUE are moved to the top of the queue.

12

Material parts whose Late\_Priority attribute is set to TRUE must be processed immediately in order to avoid having their corresponding print product exceed the contractual delay requirement defined in a SLA for the print product, referred to as Max\_Delay. Note that if the time spent within printing system 200 exceeds Max\_Delay for any product in an order then the entire order is deemed to exceed the Max\_Delay requirement.

At Step 640 the prioritized queue is sorted on the Material\_Part\_ID. At Step 650 the prioritized queue is sorted on the Tote\_ID attribute. Totes are described relative to FIG. 13. At Step 660 the prioritized queue is sorted on the Destination attribute. Destination is described relative to FIG. 13. At Step 670 the prioritized queue is sorted on the Order\_Priority attribute. Order\_Priority is described relative to FIG. 7B.

Reference is now made to FIG. 7A, which is a flow diagram describing the processing steps performed by a work scheduler to compute the SLA-based priority attribute for a work item, in accordance with an embodiment of the subject invention. FIG. 7A describes one algorithm for calculating Shop\_Priority, which is a date/time that represents the best estimate of the time when a work item will complete all processing and be picked up by a shipper. This algorithm uses the Order\_Priority attribute. Order\_Priority defines the latest time that a product can be completed and not exceed the Max\_Delay requirement. Order\_Priority is defined as:

$$\text{Order\_Priority} = \text{Order\_Accepted\_Time} + \text{Max\_Delay},$$

where Order\_Accepted\_Time is the time when the order was accepted into the system, i.e. when the order status was changed to "imaged" by prepress server 225. For purposes of clarity, Order\_Priority is a date that represents the priority or urgency of a work item relative to other work items in a prioritized queue. The earlier the date, the faster the corresponding work item needs to be processed.

Referring to FIG. 7A, at Step 705, using the Material\_Part\_ID and the current status of the work item as indices, work scheduler 245 looks up the Expected\_Delay from a list of expected delays named Expected\_Delay\_List 710. In one embodiment, Expected\_Delay\_List 710 has a format as illustrated below in TABLE 3.

TABLE 3

Expected_Delay_List (in minutes)				
Current State	Line Item			
	001-123 (Photo Book)	002-432 (Sticker)	003-456 (Notecard)	004-789 (Calendar)
Imaged	420	340	310	410
Processed	402	322	192	392
Lotted	370	307	277	360
Imported	328	301	271	315
Ready_To_Print	315	285	255	301
Moved_To_Press	245	265	235	235
Press_Imported	210	213	215	201
Printed	130	124	132	122
Bindery	110	112	104	99
Bound	102	100	82	87
Ready_To_Ship	73	65	53	62
Packaged	42	34	40	34
Shipped	—	—	—	—

In one embodiment, an Expected\_Delay value from the Expected\_Delay\_List is the empirically determined average number of minutes for a work item to complete processing, i.e. move from a given state to the final state (State=Shipped). For example, using TABLE 3, a photo book whose state is



“Lotted” will require 370 minutes on average to reach the “Shipped” state, i.e. to complete processing.

At Step 715, work scheduler 245 consults Modifier\_T-  
TABLE 720 to determine if there are any “modifiers” that must  
be taken into account when determining job priority. Modifi-  
ers are values that are subtracted or added to the priority in  
order to respectively increase or decrease priority. Modifiers  
can be inter alia per customer, per partner, per part, or per  
order. For example, for a two week period all orders coming  
from a specific partner can be increased in priority by 1 hour.  
As another example, if an order had been delayed for a par-  
ticular customer, then future orders for that customer can be  
accorded higher priority for a period of time using modifiers.

At Step 725 Priority\_Now is calculated by adding together  
the current time, the Expected\_Delay determined at Step 705  
and any modifiers determined at Step 715. In one embodi-  
ment, times are represented as the number of minutes since a  
reference time, which is taken to be Jan. 1, 1900. In another  
embodiment, times are represented as days and fractions of  
days since a reference time.

At Step 730, the work item’s Shop\_Priority attribute is set  
to the smaller of Order\_Priority and Priority\_Now.

Reference is now made to FIG. 7B, which is a flow diagram  
describing the processing steps performed by a work sched-  
uler to calculate the Late\_Priority attribute for a work item, in  
accordance with an embodiment of the subject invention. At  
Step 750 a determination is made as to whether Shop\_Priority  
is greater than or equal to Order\_Priority. If this is the case,  
then the order corresponding to the work item is in danger of  
being late; accordingly, at Step 755 the Late\_Priority attribute  
is set to TRUE. If Shop\_Priority is less than Order\_Priority  
then there is some slack time and at Step 760 Late\_Priority is  
set to FALSE.

As an example of the way that priorities come into play, the  
book block and cover of a photo book each comprise different  
work items, are assigned different serial numbers, and are  
processed separately by the prepress system and the RIP and  
print system. Typically, book block and covers will be printed  
in different print runs on different printers. While both the  
book block and cover of a photo book will each have the same  
Order\_Priority, work scheduler 235 will calculate different  
Shop\_Priorities for each work item at each state to reflect the  
different delays that each component will experience. This  
step-by-step approach to scheduling guarantees that the entire  
order is printed on time, per the Max\_Delay requirement.

Reference is now made to FIG. 8, which is a simplified  
block diagram of a prepress system, in accordance with an  
embodiment of the subject invention. Relative to FIG. 2, this  
block diagram introduces additional detail concerning pre-  
press server 225.

An order puller 810 downloads orders from partner system  
215 (FIG. 2), using an appropriate file transfer method. File  
transfer methods performed by order puller 810 include File  
Transfer Protocol (FTP), User Datagram Protocol (UDP),  
Hypertext Transfer Protocol (HTTP), and Simple Object  
Access Protocol (SOAP).

An order importer 820 transforms the order into the native  
XML format of the printing system and stores it in data  
storage 235 (FIG. 2). The XML attributes of the order are  
stored in a relational database within data storage 235 accord-  
ing to a pre-defined schema; this provides efficient access to  
the order data during subsequent processing steps. Order  
importer 820 also “serializes” the order into material parts  
that are separately processed. For example, the serialization  
of a line item consisting of five copies of a single calendar will  
result in the creation of five work items or serial items, one for  
each calendar, each with a unique serial number. Serialization

enables the printing system to efficiently manage reprints.  
Thus if one copy of a calendar is damaged, then only that copy  
need be reprinted.

In one embodiment, partner system 215 provides orders in  
a proprietary file format; in this case, order importer 820  
transforms the non-standard format into the native XML for-  
mat of the printing service.

In one embodiment, partner system 215 provides orders in  
a XML format that uses a proprietary schema; in this case,  
order importer 820 uses XSLT to transform the XML into the  
native XML format of the printing system. XSLT is a lan-  
guage for transforming XML documents conforming to a first  
schema into XML documents conforming to a second  
schema. The XSLT standard is defined and maintained by the  
worldwide web committee (W3C—see <http://www.w3.org/TR/xslt>).

An image puller 830 downloads one composite image for  
each surface referenced in a line item, and stores the compos-  
ites in storage system 235. For example, if the line item  
consists of a greetings card, then prepress server 225 down-  
loads four composite image files corresponding to the four  
surfaces shown in FIG. 1. In one embodiment, a composite  
image can be in inter alia JPEG, PDF, EPS, BMP or TIFF  
format. In one embodiment, image puller 830 retrieves compos-  
ites using standard file transfer methods including FTP,  
UDP and HTTP. Although a line item may call for a quantity  
greater than one to be printed, the composite images associ-  
ated with the line item are only downloaded once.

A pre-flighter 840 “validates” or tests each composite  
image. Pre-flighter 840 analyzes each image to ensure that the  
image is formatted correctly and contains meaningful infor-  
mation. In the printing industry, such validation is commonly  
referred to as “pre-flight.” A variety of tests can be performed  
to ensure that the image data is meaningful. In one embodi-  
ment, thumbnails are generated and an operator views the  
thumbnails to ensure that they are visually meaningful. It is  
also possible to perform automated tests; for example, corre-  
lation tests can identify if the images contain noise or mean-  
ingful data. Additionally, if multiple composite images are  
included in a single file, pre-flighter 840 extracts each com-  
posite image to a separate file. Additionally, if the composite  
image is in the PDF file format then the PDF file will be  
checked to determine if there are mistakes in the PDF file that  
would cause the composite image to be rejected or printed  
incorrectly. Examples of mistakes that can be identified  
include inter alia wrong document size, missing fonts, incor-  
rect image resolution, use of layers, and PDF/X print compli-  
ancy.

An order serializer 850 takes an order as input and serial-  
izes the order into one or more new work items each of which  
consists of a single material part. Printed material parts are  
rasterized and printed by RIP and print system 250. Printed  
and non-printed material parts are then bound together and  
packaged by finishing system 260 to form one or more com-  
pleted, ready-to-ship, products.

A print-ready maker 860 creates one print-ready file for  
each surface and one or more job control files for the print job.  
A print ready file describes the formatting and content of a  
document in a manner suitable for printing. The print-ready  
file can be in any standard or non-standard page document  
description format including inter alia PostScript, PDF,  
Microsoft Word, HTML, and rich text format (RTF). In one  
embodiment, the print ready file uses the portable data format  
(PDF). PDF is defined and maintained by Adobe Systems,  
Inc. More information about PDF can be found at [http://  
www.adobe.com/products/acrobat/adobe.pdf.html](http://www.adobe.com/products/acrobat/adobe.pdf.html).

Each print-ready file references one or more composite images, which remain in data storage **235**. Reference to a composite image is made using comments that are embedded in the print-ready files. The comments follow the open prepress interface (OPI) specification. OPI is defined and maintained by Adobe Systems, Inc. More information about OPI can be found at [partners.adobe.com/public/developer/en/ps/5660\\_OPI\\_2\\_0.pdf](http://partners.adobe.com/public/developer/en/ps/5660_OPI_2_0.pdf). The comments specify all information necessary for RIP and print system **250** to substitute the composite image data into the print-ready file during the printing process.

A job control file specifies how PDF files are to be combined and provides information about crop marks, score marks and barcode. The job control file provides information that is specific to the printing workflow but which is not contained in the print-ready file. For example, a job control file specifies inter alia where to place crop marks, and whether to print a bar code and if so where to place it. In one embodiment, the job control file uses job definition format (JDF) standard. JDF is defined and maintained by CIP4. More information about JDF can be found at <http://www.cip4.org/>.

A lotter **870** combines print jobs together, a process commonly referred to as “lotting.” Lotting offers two main advantages: (1) it improves efficiency by increasing the number of material parts printed per print job and thus decreasing the amount of time spent transitioning from one print job to the next, and (2) it minimizes paper wastage for variable length products such as photo books. The lotting process intelligently selects parts that can be combined together into a lot and produces a job control file that provides the necessary information for combining the parts to the printer. In one embodiment, lotting always combines parts of the same type; for example, notepads are only lotted with notepads, calendars are only lotted with calendars. In one embodiment, parts of different types can be combined; for example, notepads and calendars can be printed together as part of a single print run.

Lotting takes into account two cases: (1) the case of fixed length material parts, and (2) the case of variable length material parts. In the case of fixed length material parts, e.g. calendars and notecards, a preset number of material parts are lotted together. For example, in one embodiment, a lot size of 10 calendars is used where possible. Thus if 10 copies of the same calendar have been ordered they can be lotted together to form one print run. Alternatively, if two orders, one for 8 calendars and one for 2 calendars, are waiting in the prioritized queue then they can be lotted together. In the case of variable length material parts, e.g. photo books, lotting attempts to minimize the percentage of wasted paper in a print run. One method for lotting is described below with reference to FIG. **10**. It will be appreciated by those skilled in the art that in order to perform efficient lotting, prepress server **225** must take into account print run efficiency, variable length material parts such as photo book block, wastage requirements that are established for each material part, and Max\_Delay requirements defined per partner for each line item.

Lotter **870** takes into account the imposition requirement for the type of material part that is being lotted. Imposition is the process of intelligently arranging surfaces on a sheet of paper. Imposition is desirable because printing presses typically print multiple pages on a single large sheet of paper to make the most efficient use of the paper and to shorten the time required for printing. Imposition ensures that after the sheets of paper are printed, folded and trimmed, the resulting pages will be in the proper order. For example, in one embodi-

ment greeting cards are printed “4-up.” This means that four greeting card surfaces are printed on a single sheet of paper by the printer.

A print-ready generator **880** takes as input all the print-ready files (one per surface) for a lot and the job control files for the lot, and produces as output a single print-ready file and one or more job control files. If the raster image processor (RIP) that will subsequently be used to process this print job is capable of interpreting and processing embedded OPI commands then print-ready generator **880** continues to embed OPI comments. However, not all RIPs are capable of processing embedded OPI comments; if that is the case, then print-ready generator **880** incorporates the composite images stored in data storage **235** into the print-ready file. Raster image processing is discussed in greater detail with reference to FIG. **11**.

TABLE 4, below, summarizes the processing required for one lot of ten calendars

TABLE 4

Example of processing required for one lot of ten calendars		
Process	Print-ready file processing	Job control file processing
Print-ready maker	Creates 1 print-ready file per calendar surface. There are 12 double sided pages (one for each month) + 1 double sided cover page in a calendar. Hence, 13 double sided pages × 2 files per page = 26 print-ready files per calendar.	Creates 1 job control file per calendar; thus creates 10 job control files.
Lotter	Lots 10 calendars together., Creates 26 × 10 = 260 print-ready files per lot.	Combines 2 calendars per page to take into account 2 UP imposition; thus creates 5 new job control files.
Print-ready generator	Creates a single print ready file (from the 260).	Combines the 5 job control files into a single job control file for the entire print job. Also, creates two additional job control files: (1) describes the imposition of two calendars onto a single page, and (2) provides additional details such as what color management profile to use and whether the print run is simplex or duplex.

Reference is now made to FIG. **9A**, which is a flow diagram illustrating the initial processing steps performed by a prepress server, in accordance with an embodiment of the subject invention. At Step **902**, order puller **810** downloads an order from partner system **215** (FIG. **2**). The order is initially assigned a state of “Pending-Order-Import” which signifies that the order has been downloaded but has not yet been processed. At Step **904**, order importer **820** performs two tasks: (1) it transforms the order into the native XML format of the printing system and stores it in data storage **235**; and (2) it stores the XML attributes of the order in a relational database within data storage **235** according to a pre-defined schema.

At Step **906** a determination is made as to whether the order was successfully imported. If no errors are detected, then the order is determined to have been successfully imported and at Step **910** the order state is set to “Pre-batch.” The Pre-batch state signifies that the order has been successfully imported and stored.

If at Step **906** an error was detected, then at Step **908** the state of the order is set to “Pre-Order-Import-Error” which

signifies that the order will not be processed any further. Partner system **215** can resubmit the order at its option.

At Step **912**, the order enters the prioritized queue for the “Pre-batch” state. At Step **914** image puller **830** selects the first work item in the prioritized queue to process. The Image puller **830** downloads one or more composite images for each surface in each line item in the order and stores them in storage system **235**. At Step **916** a determination is made as to whether the prepress server has successfully downloaded all composites for each line item in the order. If so, then processing continues to Step **918** where the state is set to “Downloaded.” If at Step **916** it is determined that one or more composite images was not successfully downloaded then processing continues at Step **920**.

At Step **920**, a determination is made as to whether the error is due to a system error. System errors include inter alia power failure, disc failure, processor failure, and disc full. Generally, system errors result from hardware or software failures in printing system **200** (FIG. 2). Generally, system errors are quickly detected and corrected by operations staff. Non-system errors generally result from corrupted, incorrect or missing image data. If at Step **920** a system error is detected then at Step **922** the state is set to Reprint and the order is then returned to the prioritized queue at Step **912** and subsequently, another attempt will be made to process the order. If at Step **920** a non-system error is detected then the order cannot be successfully processed and control moves to Step **908** where, as previously described, the order is voided.

Reference is now made to FIG. 9B, which is a flow diagram illustrating the final processing steps performed by a prepress server, in accordance with an embodiment of the subject invention. At Step **950** the order now enters the prioritized queue for the “Downloaded” state. At Step **952** pre-flighter **840** validates all composite images for one line item. Additionally, if multiple composite images are included in a single file, pre-flighter **840** extracts each image to a separate file.

At Step **954**, if all the downloaded composite images in the order are determined to be valid, then at Step **956** the state is set to “Imaged.” Once the order has been imaged, all parts of the order including its XML specification and image content have been verified and stored in data storage **235**. At this point the “contractual clock” starts relative to the Max\_Delay requirement. If, at Step **954**, it is determined that any of the composite image are not valid then processing continues at Step **920**.

At Step **958**, the order enters the prioritized queue for the “Imaged” state. At Step **960** order serializer **850** selects the first work item in the prioritized queue to process. Order serializer **850** serializes the order into one or more new serial items each of which consists of a single material part.

At Step **962** a determination is made as to whether the order was successfully serialized. If it is determined that the order was not successfully serialized then processing continues at Step **920**.

At Step **964**, for each material part in the order, print-ready maker **860** takes the composite image(s) that corresponds to the material part as input and produces a print-ready file and a job control files as output. The print-ready file and the job control file(s) are used subsequently by the RIP and printing service.

At Step **966** the state of the order is set to “Processed.” For purposes of clarity it should be noted that at the “Processed” state each work item references one serial item or material part. Then, at Step **968** the order enters the prioritized queue for the “Processed” state. At Step **970**, lotter **870** attempts to lot the material part with other material parts waiting in the prioritized queue in order to efficiently use printer resources

as previously described. Finally, print-ready generator **880** takes as input the print-ready files (one per surface) and the job control file and produces as output a single print-ready file and one or more job control files.

If, at Step **972**, the print-ready file and the job control files are determined to have been created successfully, then, at Step **974** the prepress server **225** sets the state to “Lotted.” If an error occurs during creation of either the print ready file or the job control file, then control is transferred to Step **920**.

Now reference is made to FIG. 10, which is a flow diagram that illustrates the processing steps performed by lotter **870** to select material parts for a print lot, in accordance with an embodiment of the subject invention. The exemplary method described in FIG. 10 attempts to lot together one or more material parts to create one print lot. At Step **1010**, lotter **870** selects the first work item from the prioritized queue for the “Processed” state. At Step **1020**, lotter **870** determines if the work item to be processed is a fixed length material part. It should be noted that a fixed length material part has a fixed number of pages such as a greeting card or calendar. If the material part is fixed length, then at Step **1030** lotter **870** searches the prioritized queue in priority order and attempts to select up to Preferred\_Lot\_Quantity - 1 additional material parts of the same type where Preferred\_Lot\_Quantity is the preferred number of material parts of this type to be included in a single lot. Lotter **870** will attempt to select up to Preferred\_Lot\_Quantity of the same material parts but will accept less. As an example, if Preferred\_Lot\_Quantity is ten (10) in the case of calendars and lotter **870** has selected a first calendar to lot, then it attempts to include 9 additional calendars in the lot. If only 5 additional calendars are included as work items to be processed in the prioritized queue for the “processed” state then those five calendars together with the first will be lotted together for further processing and then printing. In other words, in the case of lotting fixed length material parts lotter **870** simply lots whatever material parts are currently available in the prioritized queue and doesn’t wait for additional material parts to arrive.

If at Step **1020** it is determined that the material part to be processed is not fixed length, i.e. it is variable length, then at Step **1040** lotter **870** searches the prioritized queue in priority order and attempts to select up to N\_UP-1 additional material parts of the same type such that taken together the N\_UP-1 material parts enable the print lot to meet a Waste Threshold requirement. The term “N\_UP” refers to the number of pages that are imposed on a single sheet during printing. For example, the book block of a photo book is a variable length material part that is printed 2 Up. In this case N\_UP-1 is one (1); thus at Step **1040** lotter **870** searches the prioritized queue for another photo book book block material part which if selected would enable the two photo book book block material parts to meet said Waste Threshold requirement. A “Waste Threshold” requirement is a pre-established value and is defined as the percentage of pages wasted due to inefficient lotting. Table 5, below, presents an example of how the Waste\_Threshold requirement is applied to variable length products. In the example, there are five photo book book block material parts awaiting lotting. The algorithm first selects the #1 position material part and then attempts to find a second material part that would enable the two material parts to meet the Waste\_Threshold requirement. If the Waste\_Threshold requirement is set to 10%, meaning that the target is to waste less than 10 percent of the pages, then material part in the eighth position would be selected to fill the lot as 21 sheets of paper will be required to print the two photo book book block material parts and each of the sheets of paper except for the last include two surfaces. The last sheet will

include only one surface. Thus the page wastage is only  $0.5 * \frac{1}{21} = 2.4\%$ . However, if the Waste\_Threshold requirement is set to 15% then the material part in the fifth position, that is 16 pages long would be selected, because of the 20 paper sheets required for printing 5 would have a single surface and the paper wastage would be  $0.5 * \frac{5}{20} = 12.5\%$ .

TABLE 5

Example Of Variable Length Lotting	
Position in Prioritized Queue	Number of Book Block Pages
1	20
3	10
5	15
8	21
12	8

At Step 1050 a determination is made as to whether N\_UP-1 material parts were selected for lotting that meet the Waste\_Threshold. If so then lotting has been successful and processing continues at Step 1090. If not, then at Step 1060 a determination is made as to whether the first work item's Late\_Priority attribute is set to True. If Late\_Priority is set to TRUE then no further delay can be tolerated and processing continues at Step 1070. At Step 1070 any additional material parts of similar type are included in the lot up to a total lot size of N\_UP even if the additional subparts will cause the lot to exceed the Waste\_Threshold. After completing the lot processing continues at Step 1090.

If at Step 1060 the Late\_Priority attribute for the work item is not TRUE, i.e. it is FALSE, then the lot has not been completed and processing proceeds at Step 1080. At Step 1080 the next work item in the prioritized queue is selected and processing returns to Step 1020. If the last work item in the prioritized queue is reached then processing begins again with the first item. At Step 1090 the state of the work item is set to "Lotted."

Now reference is made to FIG. 11 which is a simplified block diagram of a RIP and print system 1100, in accordance with an embodiment of the subject invention. Two printer clusters are illustrated, a printer cluster #1 1110 and a printer cluster #2 1120. Each printer cluster includes a print server 1130, a raster image processor (RIP) 1140, a printer console 1150 and a printer 1160. In a RIP and printing system there is typically one such cluster for each type of printer and there are typically a plurality of different types of printers. Further a printer cluster may include a plurality of printers 1160 of the same type. Vendors of commercial quality printers include HP, XEROX, and Kodak. Typically, a commercial quality printer requires a RIP 1140 designed specifically for said commercial quality printer. It will be appreciated by those skilled in the art that print server 1130 may be a separate computer system, a card running inside a server computer, or it may be configured as software or hardware inside of pre-press server 225, management server 230, or a finishing server 1305 (FIG. 12). Similarly, it will be appreciated by those skilled in the art that RIP 1140 may be a separate computer system, a card running inside a server computer, or it may be configured as software or hardware inside of pre-press server 225, management server 230, or a finishing server 1305.

Print server 1130 periodically reviews the prioritized queue of work items for the "Lotted" state provided by work scheduler 245 (FIG. 2). Print server 1130 selects the highest priority work item that needs to be raster image processed

(commonly referred to as "ripped") and transfers the print-ready file and job control file for the work item to RIP 1140. Print server 1130 then changes the work item state to "Imported."

RIP #1 1120 receives a print-ready file and a job control file as input. If the print-ready file embeds OPI comments to reference high resolution composite images, then RIP 1140 replaces the OPI comments with the composite images stored in data storage 235 (FIG. 2) during raster image processing. When RIP 1140 completes raster image processing the print job, print server 1130 updates the work item state to "Ready-to-print." RIP 1140 stores the ripped print data in data storage 235.

Print server 1130 displays the prioritized queue for the "Ready-to-Print" state produced by work scheduler 245 on printer console 1150. The prioritized queue includes work items whose state may be: Lotted, Imported, Ready-to-Print, Imported-to-Press, or Printed.

A human printer operator 1170 uses printer console 1150 to perform a plurality of functions including selecting and initiating the next work item (commonly referred to as a "print job" while it is being processed by RIP and print system 1100) on printer 1160. Prior to starting the next work item, printer operator 1170 may have to inter alia load additional paper, load a new type of paper, or add ink. Once printer operator 1170 selects and initiates a work item, print server 1130 moves the ripped print data from data storage 235 to printer 1160. Print server 1130 then updates the work item state to "Imported to Press." Once the print job successfully prints, print server 1130 updates the job status to "Printed."

In one embodiment, printer operator 1170 can select a print job to be printed by an external printer 1180. For purposes of clarity, the term external printer refers to a printing press or printing service that operates at a physically remote location. The printing press or printing service may be managed by the same organization that manages printing service 200 or it may be managed by a distinct organization or entity. The operator selects a work item whose status is Ready-to-Print and selects an external printer to perform the printing. The ripped data file(s) for the work item is transferred either across a network or are written onto removable storage media and then transferred to external printer 1160. Removable storage media includes inter alia USB drive, DVD-RW, DVD-ROM, CD-RW, CD-ROM and external hard drive. The work item is printed off-site by external printer 1160 and the printed materials are then transported back to printing system 200. When a work item is printed by an external printer 1160 the printed work item itself is scan-verified using a hand-held scanner 1330 to signal that the work item has completed and to change the job status to "Printed." Scan-verification is described with reference to FIG. 13) The print job can be scan-verified by the external printer, in which case a message is generated and sent electronically to print server 1130 or it can be scan-verified by a shop floor operator 1350 after the print job is received. Shop floor operator 1350 is described with reference to FIG. 13. Once the print job successfully and has been scanned, print server 1130 updates the job status to "Printed."

Reference is now made to FIG. 12, which is an illustrative screen capture from a printer console, in accordance with an embodiment of the subject invention. A printer console screen 1200 enables printer operator 1170 to interactively control the flow of print jobs to one or more printers 1160. There is a unique printer console 1150 for each type of printer. Typically, thus one printer console 1150 may control the flow of print jobs to several printers 1160 of the same type. On the left side of printer console screen 1200, an "awaiting print" window 1210 displays each work item which has "Ready-to-

Print” status and is thus ready to be printed. The work items, or print jobs as they are commonly referred to, are lotted material parts that have been ripped by RIP 1140 and which are stored on data storage 235. Awaiting print window 1210 displays a part number for each type of material part awaiting printing and the number of waiting print jobs for each said type of material part. It should be noted that the label “Part” that appears in awaiting print window 1210 is an abbreviation for the previously defined term “material part”. When a Part is expanded, as shown in 1220, the material part serial number, shop priority date and size are listed for each work item in the list.

A “hot folder” window 1230, entitled “iGen-1”, displays each print job that has moved by printer operator 1170 from awaiting print window 1210 to hot folder window 1230. Print jobs in hot folder window 1230 will be printed on the currently selected printer. In this example, the currently selected printer is iGen-1 as indicated by an enabled printer button 1240. In this example, the DocuSP Console controls four printers of the same type: iGen-1, iGen-2, iGen-3, and iGen-4. Printer operator 1170 can drag or more print jobs from awaiting print window 1210 into hot folder window 1230 to initiate printing of print jobs. Alternatively, printer operator 1170 can select one or more print jobs listed in awaiting print window 1210 and then click an “Add Selected to Hot Folder” button 1250 to initiate printing of print jobs. Printer operator 1170 can select print jobs listed in hot folder window 1230 and click on “Remove Selected from Hot Folder” button 1260 to remove print jobs from the hot folder window 120 and place them back in the awaiting print window 1210.

Reference is now made to FIG. 13, which is a simplified block diagram of a finishing system 1300, in accordance with an embodiment of the subject invention. Finishing system 1300 takes printed parts from the RIP and print system 250 (FIG. 2) and binds them into completed products, packages them and ships them to recipients to fulfill orders received from partner system 215 (FIG. 2). Two types of human staff or workers are employed in finishing system 1300. A shop floor manager 1340 utilizes a management console 1335 to manage the flow of tasks and a shop floor operator 1350 performs sorting, binding, and packaging tasks. A finishing server 1305 exchanges status information with management server 230 and interacts with shop floor manager 1340 via a management console 1335, and with shop floor operator 1350 via a shop floor console 1325 and via a hand-held scanner 1330. Hand-held scanner 1330 can be wirelessly connected to finishing server 1305, or it can be connected by a hard-wired communications line.

Finishing server 1305 three processing modules. A bin manager 1310 manages the sorting of printed parts into and out of material bin 1362 by shop floor operator 1350. A console manager 1315 manages the flow of messages to and from shop floor console 1325, hand held scanner 1330 and management console 1335. A shipping manager 1320 generates a packing slip and a mailing label for each package.

It will be appreciated by those skilled in the art that finishing server 1305 may be a separate computer system; or alternatively finishing server software modules, bin manager 1310, console manager 1315 and shipping manager may be configured to run inside of management server 230, prepress server 225 or print server 1110. It will be further appreciated that finishing server 1305 may be several computer systems, each configured to run one or more processes or handle a certain number of jobs. For example, one finishing server 1305 may run bin manager 1310 and shipping manager 1320, while another finishing server 1305 runs console manager 1315.

Once material parts have been printed by RIP and printing system 250 (FIG. 2), they are transported by shop floor operator 1350 using a tote 1355 near to a material bin unit 1360 on the shop floor. For purposes of simplicity, the term “tote” refers to a container of known size used to transport physical items such as material parts, bound products, and packaged products from one location within finishing system 1300 physical premise to another. Typically, one or more totes are placed onto a cart which has wheels and which can be conveniently pushed across finishing system 1300 physical premise. For purposes of clarity, the finishing system 1300 physical premise is referred to as the “shop floor.”

A material bin unit 1360 is a temporary storage unit that is constructed from inter alia wood, metal or plastic that is divided into a plurality of material bins 1362, each having a designated height, width and depth. In addition, each material bin 1362 displays a unique bin number, both in numeric format and in bar code format so that it can be conveniently scanned using hand-held scanner 1330. In one embodiment material bins 1362 are of different sizes, e.g. 1 inch, two inches, and three inches wide.

Shop floor operator 1350 performs material sorting, which is also known as collating. Before starting to sort materials into material bins 1360, shop floor operator 1350 signs in to finishing server 1305. To sign in, shop floor operator 1350 uses either hand-held scanner 1330 or shop floor console 1325 to provide his operator id, and to identify his location on the shop floor. After signing in, shop floor operator 1350 may perform material sorting.

Now reference is made to FIG. 14, a simplified flow diagram that illustrates the steps performed in material sorting, in accordance with an embodiment of the subject invention. At Step 1410 shop floor operator 1350 selects a material part from tote 1355 and scans it using hand-held scanner 1330. Hand-held scanner 1330 scans the bar code printed on the material part and transmits this information to console manager 1315. At Step 1420 a determination is made as to whether a co-material part has already been scanned. A “co-material part” refers to one of the material parts that makes up a serial item. For a serial item to be complete and ready for binding, all of its co-material parts must be placed by shop floor operator 1350 into the same material bin 1362. For example, if a photo book cover is in a material bin 1362, there is a corresponding book block co-material part because a photo book cover and its corresponding book block are required for the complete photo book serial item to be bound. If a co-material part has already been scanned, then, at Step 1430, bin manager 1310 obtains the bin number that the first co-material part was placed into by shop floor operator 1350.

If no co-material part has yet been received, then, at Step 1440, a new material bin 1362 is assigned by bin manager 1310. Bin manager 1310 takes into account the size requirement of the serial item material parts when assigning a material bin. In one embodiment, there are a plurality of bin sizes, e.g. 1 inch, 2 inches, and 3 inches; and bin manager 1310 takes into account the sizes of all available bins in selecting the bin size that will afford the tightest fit. For variable size material parts, such as the book block of a photo book, bin manager 1310 computes the size of the part by taking into account the page count. In one embodiment, if there are multiple bins of the correct size available, bin manager 1310 selects a bin where the adjacent bins are not currently storing parts in order to reduce the possibility of accidental mistakes by shop floor operator 1350 such as placing a material part into the wrong material bin 1362.

At Step 1450, bin manager 1310 provides console manager 1315 the number of the material bin assigned to the serial item

and console manager **1315** displays said material bin number on hand-held scanner **1330**. At Step **1460**, shop floor operator **1350** places the part into the material bin **1362** that corresponds to said material bin number.

At Step **1470**, shop floor operator **1350** uses hand-held scanner **1330** to scan-verify the bar code for said material bin **1362** to indicate that the material part was successfully placed into the correct material bin **1362**. The action of scanning a bin's barcode into which the operator just placed, or withdrew an item is referred to as "scan-verifying." At Step **1480**, after receiving the scanned bin number via console manager **1315**, bin manager **1310** determines whether material sorting of the serial item is complete, i.e. whether all of its component material parts have been placed into material bin **1362**. If material sorting is determined to be complete then, at Step **1490**, bin manager **1310** updates the job status to "Bindery." At this point, the serial item has been successfully sorted and is ready to be processed in a bindery **1365**. If not all co-material parts have been placed into material bin **1362**, then additional parts will have to arrive and be material sorted in order to complete material sorting of the serial item and send it to bindery **1365**.

In one embodiment, after shop floor operator **1350** places the last co-material part into material bin **1362** hand-held scanner **1330** beeps to indicate that all co-material parts have been placed into material bin **1362**.

Referring back to FIG. **13**, once a serial item has been material sorted then the serial item can enter bindery **1365**. Bindery **1365** is a location, including staff and equipment, on the shop floor where binding is performed. The term "binding", refers to actions that are performed on material parts of a serial item to create a finished product. Said actions include inter alia gluing, stapling, folding, cutting and sewing. For example, if the material parts consist of a cover and book block, then these will have to be glued, stapled or otherwise attached in the bindery. Note that some serial items, including greeting cards and calendars, have only one material part. In such cases, bindery actions such as folding may still be necessary. In some cases, for example with certain types of greeting cards, no bindery actions at all are required. In such cases material sorting is not required and the tote carrying the printed material part will bypass the bindery and be moved to the area on the shop floor where the material part will be ship sorted into a shipping bin **1372**.

In bindery **1365**, shop floor operator clicks a "Find Next" button on hand-held scanner **1330** and bin manager **1310** retrieves the first work item from the appropriate prioritized queue. Hand-held scanner **1330** displays the number of the material bin **1362** that holds the material parts to bind. Shop floor operator takes the material parts out of the indicated material bin **1360** and scan-verifies each material part by scanning the bar code that has been printed and is visible on the material part. After the last material part has been scan verified, bin manager **1310** releases the material bin for subsequent use. Hand-held scanner **1330** then indicates any non-printed material parts, e.g. a velum separator sheet or a non-printed book cover, to be bound together with the printed material parts. Shop floor operator retrieves any such non-printed material parts which are typically stored within bindery **1365**. Shop floor operator **1350** then performs the appropriate binding task on the material parts. Next, shop floor operator **1350** scans the bound serial item and places it into tote **1355**. At this point, bin manager **1210** updates the job status to "Bound." When said tote **1355** is full, shop floor operator **1350** moves said tote **1355** near to a shipping bin unit **1370** so that the bound serial items can be "ship sorted."

A shipping bin unit **1370** is a temporary storage unit that is constructed from inter alia wood, metal or plastic that is divided into a plurality of shipping bins **1372**, each having a designated height, width and depth. In addition, each shipping bin **1372** displays a unique bin number, both in numeric format and in bar code format so that it can be conveniently scanned using hand-held scanner **1330**. In one embodiment shipping bins **1372** are of different sizes, e.g. 1 inch, two inches, and three inches wide.

Shop floor operator **1350** performs ship sorting which is the process of taking individual bound serial items out of tote **1355** and placing them in designated shipping bins **1372**. Before starting to ship sort, shop floor operator **1350** signs in to finishing server **1305**. To sign in, shop floor operator **1350** uses either hand-held scanner **1330** or shop floor console **1325** to provide his operator id, and to identify his location on the shop floor. After signing in, shop floor operator **1350** may perform ship sorting.

The process of ship sorting is analogous to the process of material sorting. However, in the case of ship sorting, bound serial items are taken from tote **1355** and placed into designated shipping bins **1372** by shop floor operator **1350**. A shipping bin holds all serial items that will be packaged together. Ship sorting employs a similar algorithm to that used for material sorting, described with reference to FIG. **14**, with three exceptions: (1) rather than placing co-material parts into material bins **1362**, shop floor operator **1350** places bound serial items into shipping bins **1372**; (2) rather than wait for all co-material parts for the bin to be considered full, the algorithm waits for all serial items that will later be packaged together; and (3) rather than updating the job status to "Bound", bin manager **1310** updates the job status to "Ready-To-Ship." As with material sorting, shop floor operator **1350** withdraws a serial item and scans it. Then, bin manager **1310** uses console manager **1315** to display the shipping bin number into which to place the line item. Next, shop floor operator **1350** places the serial item into the shipping bin **1372** that corresponds to said shipping bin number and scan-verifies the shipping bin. When assigning a shipping bin **1372**, bin manager **1310** takes into account the size of all serial items that must fit into the shipping bin.

Once all serial items that will be included in a package have been ship sorted into shipping bins **1372**, they are ready to be packaged at a packaging station **1375**. Packaging station **1375** is a physical location on the shop floor where packaging is performed.

At packaging station **1375** shop floor operator **1330** clicks a "Find Next" button on shop floor console **1325** and bin manager **1310** retrieves the first work item from the appropriate prioritized queue and displays the number of the shipping bin **1372** that contains the serial items to package. Shop floor operator **1350** takes the serial items out of the indicated shipping bin **1372**. Shop floor operator **1250** then scan-verifies said shipping bin **1372** to indicate that the serial items have been taken out and that said shipping bin **1372** is now empty and can be reused. Then bin manager **1310** changes the status of the work item to "Packaged" and (1) selects the appropriate box from a plurality of different types and sizes of boxes, taking into account the size and weight requirements for each serial item to be included in the box, and (2) prints a packaging slip. If the package is to be picked up by a shipping service then a shipping label including postage is also printed. If the package is to be set aside for pickup by a "lab" then a lab label is printed. A lab is a photo lab service or other company for whom packages are batched and shipped together.

Shop floor operator **1350** then uses shop floor console **1325** to determine if any embellishments need to be added to the

package. Shop floor operator **1350** retrieves any such needed embellishments which are typically stored near to packaging station **1375**.

Shop floor operator **1350** completes the packaging task by (1) pulling the appropriate box as indicated by the packaging screen displayed by shop floor console **1325**, (2) placing the serial items, the packaging slip, and packaging material in the box, (3) sealing the box and (4) affixing the shipping label or lab label to the box. Shop floor operator **1350** then places the package into tote **1355** which will be moved to a designated pick up area on the shop floor. At this point, bin manager **1310** updates the work item status to "Shipped."

If an error occurs during packaging an error label is printed and the order remains in the "Packaged" state. In this case, the package and the error label are set aside for shop floor manager **1340**. Once shop floor manager **1340** resolves the error he scans the package again to obtain a shipping label, then affixes the label and places the package into the designated tote **1355**. Bin manager **1310** then updates the work item status to "Shipped."

In one embodiment, if the package is intended for a lab then a lab label is affixed and the package is placed in a designated tote, referred to as a "lab bin." Periodically, shop floor operator **1350** uses shop floor console **1325** to scan-verify packages from the lab bin and place the packages into a box. When the box is full shop floor operator **1350** uses shop floor console **1325** to indicate to bin manager **1310** that the package is full. Shipping manger **1320** then prints a packing slip and a shipping label. Shop floor operator **1350** places the packing label inside the box, seals the box, and places the shipping label on the box. Shop floor operator **1350** then moves the box to a designated location on the shop floor. Bin manager **1310** then updates status for each of the work items that were placed in the box to "Shipped."

Now reference is made to FIG. 15, which is an illustrative screen capture from a shop floor console, in accordance with an embodiment of the subject invention. In this example, shop floor operator **1350** selects the operation "Scan to Reprint" and the user interface screen depicted in FIG. 15 appears. Next, shop floor operator **1350** scans the barcode that appears on a serial item to be reprinted. The serial item number appears in a barcode field **1510**. Shop floor operator **1350** may use a checkbox **1520** to indicate whether the entire lot, a single serial item or an entire lot with scan verification should be assigned to reprint. Shop floor operator **1350** can check a box **1530** and enter a reason code that indicates the reason why the serial item is to be reprinted. Window **1540** displays a list of previous serial items that were scanned to reprint.

Now reference is made to FIG. 16, which is a simplified block diagram of a multi-site printing system, in accordance with an embodiment of the subject invention. A "multi-site printing system" enables a plurality of printing systems, each at a different location, to work together cooperatively to share and distribute the printing workload. Multi-site printing offers several advantages including increased redundancy in case of equipment or system failure, increased capacity for peak workload and decreasing shipping times by having printing systems geographically close to the recipient. The following discussion (with reference to FIG. 16) describes only the enhanced capabilities of the "multi-site printing system" embodiment. The multi-site printing system embodiment incorporates all the features and functions of printing system **200** as described with reference to FIG. 2.

FIG. 16 includes two printing systems, a printing system **#1 1610** and a printing system **#2 1640**. Printing system **#1 1610** receives orders from partner system **215** (FIG. 2). To accomplish this, prepress server **225** (FIG. 2) downloads,

imports, and stores each order in a data storage **#1 1620** using the method described with reference to FIG. 8. A site assigner **1630** then assigns the order a print site identifier (referred to as a "site ID") that identifies the site that will rasterize, print, bind, package, and ship the order. Site, in this case, refers to either printing system **#1 1610** or printing system **#2 1640**.

In one embodiment, site assigner **1630** automatically assigns the site ID based on the addresses of the recipients of the printed products included in the order. For example, if the majority of recipients are located in the eastern United States then the order may be assigned to printing system **#1** whereas if the majority of recipients are located in the western and midwestern United States the order may be assigned to printing system **#2**.

In a second embodiment, site assigner **1630** automatically assigns the site ID based on the type of printer. For example, orders that contain posters may be printed by printing system **#1 1610** whereas orders containing photo books may be assigned to printing system **#2. 1640**.

Data storage **#1 1620** and data storage **#2 1650** each include relational databases. Said two relational databases are synchronized using transaction replication. Transactional replication is an industry standard type of replication, provided by most commercial relational database management systems, that allows data modifications to be propagated incrementally between databases in a distributed environment.

Once a site ID is assigned to an order and the order has been imported, the rest of the workflow is identical to that described previously with reference to FIG. 2 with the exception that printing system **#1 1610** only processes orders that are assigned to it, and printing system **#2 1640** only processes orders that are assigned to it. For example, if printing system **#2 1640** processes an order then the prepress server included in printing system **#2** will download the composite images required to print the order and store them in data storage **#2 1650**.

The multi-site printing system offers protection in case of a component failure in one of the printing systems. In one embodiment, if there is a component failure in one printing system, for example, in printing system **#2**, then any order assigned to printing system **#2 1640** are reassigned to printing system **#1 1610** for processing. Orders that are being processed by printing system **#2** at the time of the component failure can be halted and reprinted by printing system **#1 1640**. Halting and reprinting an order that is in process can be performed as follows: (1) a printer operator such as printer operator **1170** reassigns the order's site ID to printing system **#1**; (2) any data associated with the order in data storage **#2 1650** is replicated to data storage **#1 1620**; and (3) the job status is set to Reprint which puts the system into the prioritized queue of printing system **#1 1610**. One method for replicating data from data storage **#2 1650** to data storage **#1 1620** is to use a folder replication feature that is commonly available with network addressable storage (NAS) systems such as those typically used by data storage **#1 1620**.

It will be appreciated by those skilled in the art that site assigner **1630** may run in any server within printing system **1610** including management server **230**, prepress server **225**, print server **1110**, or finishing server **1205**. Additionally, it will be appreciated by those skilled in the art that the previously described approach to multi-site printing can be used to share print order processing among more than two printing systems.

## LISTING 1

```

<?xml version="1.0" encoding="ISO-8859-1"?>
<Order xmlns="http://www.ipads.com/xml/iPads_Order"
xmlns:xsi="http://www.w3.org/2001/XMLSchema-instance"
CustomerID="Partner_Brand" EnvelopeID="33809" OrderID="33809"
orderDate="2007-02-12"
xsi:schemaLocation="http://www.ipads.com/xml/iPads_Order
iPads_Order.xsd">
  <Address AddressID="1">
    <firstname>Mark</firstname>
    <lastname>Gustafson</lastname>
    <address1>100 EastLake Ave N</address1>
    <address2></address2>
    <address3></address3>
    <city>Seattle</city>
    <state>WA</state>
    <postalcode>98101</postalcode>
    <country>US</country>
    <phone></phone>
    <email>mark@rpiprint.com</email>
  </Address>
  <Contact ContactID="1" AddressID="1" />
  <BillTo BillingID="1" AddressID="1"> </BillTo>
  <ShipTo AddressID="1">
    <ShipMethod>GROUND</ShipMethod>
    <PackingSlip include="true" />
  </ShipTo>
  <CartItem ContactID="1" description="scenes" quantity="7">
    <PhotoBook_8by10wrap>
      <PhotoBookAttributes>
        <PhotoBookCover>
          <PhotoBookCoverAttributes>
            <JobName Value="CoverPortrait"/>
            <JobStock
Value="Black_Small_Wrap_Cover_Port_PartnerBrand"/>
          </PhotoBookCoverAttributes>
        </PhotoBookCoverAttributes>
        <PhotoBookPage PartOrder="1">
          <PhotoBookPageAttributes>
            <TemplateName Value="StandardWrapPortraitCover"/>
          </PhotoBookPageAttributes>
          <Photo>
            <PhotoAttributes>
              <Filename Value="cover_P24786_0002.pdf"/>
              <ImageType Value="pdf"/>
              <ElementName Value="Photo1"/>
              <CropStyle Value="StretchFit"/>
            </PhotoAttributes>
          </Photo>
        </PhotoBookPage>
      </PhotoBookCover>
    </PhotoBookBookBlock>
    <PhotoBookBookBlockAttributes>
      <JobName Value="DuplexPortrait"/>
    </PhotoBookBookBlockAttributes>
    <PhotoBookPage PartOrder="1">
      <PhotoBookPageAttributes>
        <TemplateName Value="StandardPortrait"/>
      </PhotoBookPageAttributes>
      <Photo>
        <PhotoAttributes>
          <Filename Value="page_P24786_0001.pdf"/>
          <ImageType Value="pdf"/>
          <ElementName Value="Photo1"/>
          <CropStyle Value="StretchFit"/>
        </PhotoAttributes>
      </Photo>
    </PhotoBookPage>
  </PhotoBookPage PartOrder="2">
    <PhotoBookPageAttributes>
      <TemplateName Value="StandardPortrait"/>
    </PhotoBookPageAttributes>
    <Photo>
      <PhotoAttributes>
        <Filename Value="page_P24786_0002.pdf"/>
        <ImageType Value="pdf"/>
        <ElementName Value="Photo1"/>
        <CropStyle Value="StretchFit"/>
      </PhotoAttributes>
    </Photo>
  </Order>

```

-continued

## LISTING 1

```

</PhotoBookPage>
</PhotoBookBookBlock>
<NonPrintableMaterial>
  <NonPrintableMaterialAttributes>
    <Description Value="VelumSeparator012"/>
    <Quantity Value="1"/>
  </NonPrintableMaterialAttributes>
  </NonPrintableMaterial>
  </PhotoBook_8by10wrap>
</CartItem>
</Order>

```

15 What is claimed is:

1. A computer-implemented method for end-to-end printing, comprising:

(i) entering into service level agreements with a plurality of partner systems that enable customers to order personalized print products, wherein a service level agreement designates maximum delays for finishing customer print orders;

(ii) receiving a customer print orders forwarded from one of the plurality of partner systems, the print order specifying at least one personalized print product;

(iii) serializing the print order into a plurality of work items, each work item corresponding to a part of a personalized print product that is independently printed on printable material, and wherein at least one of the at least one personalized print products specified in the print order comprises a plurality of parts;

(iv) dynamically assigning priorities to the work items based on the states of the work items and based on the designated delays within the service level agreements with the partner system that forwarded the print order; and

(v) dynamically advancing the work items through a plurality of print processing states, wherein each processing state processes work items in order of their priorities;

(vi) preparing (a) a print-ready file and (b) print instructions for each work item;

(vii) rasterizing the print-ready files for work items into images that can be directly printed by a printer, based on print instructions for the work item;

(viii) printing the images generated by said rasterizing on printable material; and

(ix) dynamically assigning the printable materials with the printed images to physical containers for transport across a printing system shop based on at least one criterion selected from: an estimate of the time to complete processing the corresponding work items, the designated delays within the service level agreements with the partner system that forwarded the print order, and a destination.

2. The method of claim 1 further comprising electronically notifying the partner system that forwarded the print order when work items enter designated states.

3. The method of claim 1 wherein said dynamically assigning priorities to the work items is further based on an estimate of the time to complete processing of a work item when the work item is at a specific print processing state.

4. The method of claim 3 wherein the priority assigned to a work item by said dynamically assigning priorities is increased or decreased based on a modifier.

5. The method of claim 1 wherein said dynamically assigning printed parts to physical containers for transport refers to transport between the printer that printed the images on print-



29

able materials and a bindery for binding together printed materials and non-printable materials that are parts of the same personalized print product.

6. The method of claim 1 wherein said dynamically assigning printed parts to physical containers for transport refers to transport between a bindery for binding together printed images on printable material and non-printable materials that are parts of the same personalized print product and a packaging area for packaging together personalized print products that are to be shipped to the same destination.

7. A printing system, comprising:

a memory for storing (i) service level agreements for each of a plurality of partner systems that enable customers to order personalized print products, wherein a service level agreement designates maximum delays for finishing customer print orders, and for storing (ii) a customer print orders forwarded from one of the plurality of partner systems, the print order specifying at least one personalized print product;

an order serializer for serializing the print order into a plurality of work items, each work item corresponding to a part of a personalized print product that is independently printed on printable material, and wherein a customized print product may include a plurality of parts; and

a work scheduler for:

dynamically advancing the work items through a plurality of processing queues; and

dynamically assigning a priority to each work item entering one of the plurality of processing queues based on an estimate of the time to complete processing the work item and based on the designated delays within the service level agreements with the partner systems that forwarded the print order;

a print server for:

processing the work items entering at least one of the processing queues in order of the dynamically assigned work item priorities;

preparing (a) a print-ready file and (b) print instructions for each work item; and

rasterizing the print-ready files for work items into images that can be directly printed by a printer, based on print instructions for the work item;

a printer for printing the images generated by said rasterizing on printable material; and

a finishing server for dynamically assigning the printable materials with the printed images to physical containers for transport across a printing system shop based on at least one criterion selected from: an estimate of the time to complete processing the corresponding work items, the designated delays within the service level agreements with the partner system that forwarded the print order, and a destination.

8. The printing system of claim 7 further comprising a status updater for electronically notifying the partner system that forwarded the print order when work items enter designated states.

9. a computer-implemented method for a printing system capable of printing at a physically remote location comprising:

(i) entering into service level agreements with each of a plurality of partner systems that enable customers to order personalized print products, wherein a service level agreement designates maximum delays for finishing customer print orders;

30

(ii) receiving a customer print order forwarded from one of the plurality of partner systems, the print order specifying at least one personalized print product;

(iii) serializing the print order into a plurality of work items, each work item corresponding to a part of a personalized print product that is independently printed on printable material, and wherein at least one of the at least one personalized print products specified in the print order comprises a plurality of parts;

(iv) dynamically assigning priorities to the work items based on the states of the work items and based on the designated delays within the service level agreements with the partner system that forwarded the print order;

(v) dynamically advancing the work items through a plurality of print processing states, wherein each processing state processes work items in order of their priorities;

(vi) preparing (a) a print-ready file and (b) print instructions for each work item;

(vii) rasterizing the print-ready files for work items into image files that can be directly printed by a printer, based on print instructions for the work item;

(viii) designating a remotely located printer to print the images generated by said rasterizing;

(ix) transferring the images to a remotely located printer;

(x) printing the images on printable material by a remotely located printer to create printed material; and

(xi) transferring said printed material printed by a remotely located printer back to the printing system for further processing.

10. The method of claim 9 further comprising electronically notifying the partner system that forwarded the print order when work items enter designated states.

11. A method for a multi-site printing system comprising:

(i) entering into service level agreements with each of a plurality of partner systems that enable customers to order personalized print products, wherein a service level agreement designates maximum delays for finishing customer print orders;

(ii) receiving, by a first printing system, a customer print order forwarded from one of the plurality of partner systems, the print order specifying at least one personalized print product;

(iii) assigning, by the first printing system, the processing of the print order to one of a plurality of remote printing systems, each operating at a different physical location;

(iv) transferring print order data for the print order, by the first printing system, to the assigned remote printing system;

(v) serializing the print order into a plurality of work items, by the assigned remote printing system, each work item corresponding to a part of a personalized print product that is independently printed on printable material, and wherein at least one of the at least one personalized print products specified in the print order comprises a plurality of parts;

(vi) dynamically assigning priorities to the work items, by the assigned remote printing system, based on the states of the work items and based on the designated delays within the service level agreements with the partner system that forwarded the print order; and

(vii) dynamically advancing the work items through a plurality of print processing states, by the assigned remote printing system, wherein each processing state processes work items in order of their priorities;

(viii) preparing (a) a print-ready file and (b) print instructions for each work item;

**31**

- (ix) rasterizing the print-ready files for work items into images that can be directly printed by a printer, based on print instructions for the work item;
- (x) printing the images generated by said rasterizing on printable material; and
- (xi) dynamically assigning the printable materials with the printed images to physical containers for transport across a printing system shop based on at least one criterion selected from: an estimate of the time to complete processing the corresponding work items, the designated delays within the service level agreements with the partner system that forwarded the print order, and a destination.

**32**

**12.** The method of claim **11** further comprising electronically notifying the partner system that forwarded the print order, by the assigned remote printing system, when work items enter designated states.

**13.** The method of claim **11** wherein said customer print order is stored in a transactional database and said transferring of print order data is accomplished by replicating transactions between the transactional databases maintained by the first printing system and by each of the remote printing systems.

\* \* \* \* \*