



US008340702B2

(12) **United States Patent**
Bychkov et al.

(10) **Patent No.:** **US 8,340,702 B2**
(45) **Date of Patent:** **Dec. 25, 2012**

- (54) **UNSUCCESSFUL CALL ALERT** 6,680,935 B1* 1/2004 Kung et al. 370/352
- 6,690,947 B1 2/2004 Tom
- (75) Inventors: **Eyal Bychkov**, Hod Hasharon (IL); **Uri Ron**, Tel Aviv (IL) 6,799,017 B1 9/2004 Kregel
- 6,898,283 B2 5/2005 Wycherley et al.
- 7,085,542 B2 8/2006 Dietrich et al.
- 7,194,285 B2 3/2007 Tom
- (73) Assignee: **Google Inc.**, Mountain View, CA (US) 2002/0090980 A1 7/2002 Wilcox et al.
- 2002/0159572 A1 10/2002 Fostick
- (*) Notice: Subject to any disclaimer, the term of this patent is extended or adjusted under 35 U.S.C. 154(b) by 0 days. 2002/0181672 A1 12/2002 Cannell et al.
- 2004/0057561 A1 3/2004 Gilbert
- 2004/0209605 A1 10/2004 Urban et al.
- 2004/0233930 A1 11/2004 Colby, Jr.
- 2004/0267884 A1* 12/2004 Sar-Shalom 709/206
- 2005/0070225 A1 3/2005 Lee
- (21) Appl. No.: **13/324,957** 2005/0159184 A1 7/2005 Kerner et al.
- (22) Filed: **Dec. 13, 2011** 2006/0105722 A1 5/2006 Kumar
- 2006/0140200 A1 6/2006 Black et al.
- (65) **Prior Publication Data** 2006/0241353 A1 10/2006 Makino et al.
- US 2012/0083254 A1 Apr. 5, 2012 2006/0246877 A1 11/2006 Kashanian et al.
- 2007/0004450 A1 1/2007 Parikh
- 2007/0018957 A1 1/2007 Seo

(Continued)

Related U.S. Application Data

- (63) Continuation of application No. 11/983,444, filed on Nov. 9, 2007, now Pat. No. 8,078,204.

FOREIGN PATENT DOCUMENTS

- EP 0913982 A2 5/1999
- (Continued)

- (51) **Int. Cl.**
H04W 4/00 (2009.01)
- (52) **U.S. Cl.** **455/466**; 455/412.1; 455/418;
455/415; 455/413; 455/414.1
- (58) **Field of Classification Search** 455/466,
455/412.1, 418, 415, 413, 414.1
See application file for complete search history.

Primary Examiner — Kwasi Karikari
(74) *Attorney, Agent, or Firm* — Soquel Group LLC

(57) **ABSTRACT**

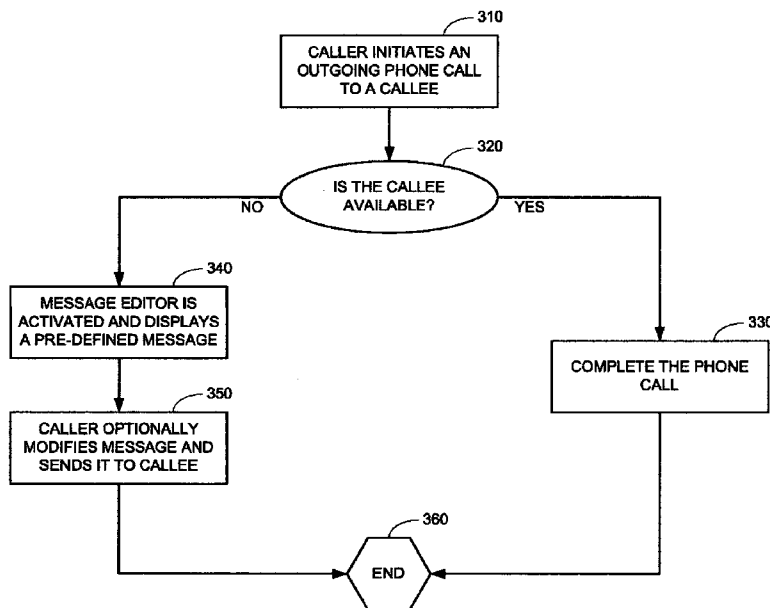
A method for a mobile phone to provide an unsuccessful call alert, including monitoring an outgoing call from a caller to a callee to determine if the callee is available; if the callee is not available, then automatically actuating a message editor, automatically displaying a pre-defined call alert message, including an identifier of the caller and contact information for the caller, enabling the caller to edit the pre-defined call alert message, and sending the call alert message to the callee. A system is also described and claimed.

(56) **References Cited**

U.S. PATENT DOCUMENTS

- 5,628,055 A 5/1997 Stein
- 5,893,037 A 4/1999 Reece et al.
- 6,201,867 B1 3/2001 Koike
- 6,243,578 B1 6/2001 Koike
- 6,529,737 B1 3/2003 Skinner et al.
- 6,640,113 B1 10/2003 Shin et al.

10 Claims, 6 Drawing Sheets



US 8,340,702 B2

Page 2

U.S. PATENT DOCUMENTS

2007/0161404 A1 7/2007 Yasujima et al.
2008/0032687 A1 2/2008 Mathewson et al.
2008/0140886 A1 6/2008 Izutsu

FOREIGN PATENT DOCUMENTS

EP 1871075 A1 12/2007
GB 2445669 A1 7/2008

WO 0059247 A1 10/2000
WO 0186922 A1 11/2001
WO 03079657 A1 9/2003
WO 03103174 A1 12/2003
WO 03103262 A1 12/2003
WO 2007127139 A1 11/2007

* cited by examiner

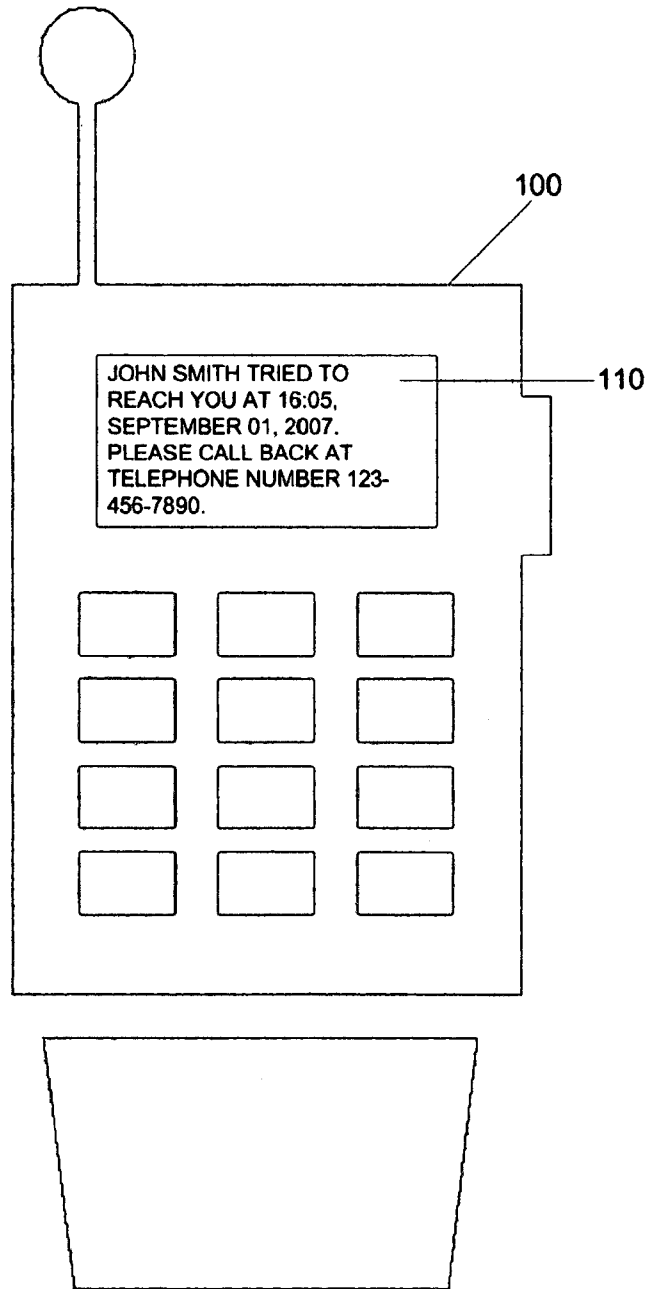


FIG. 1

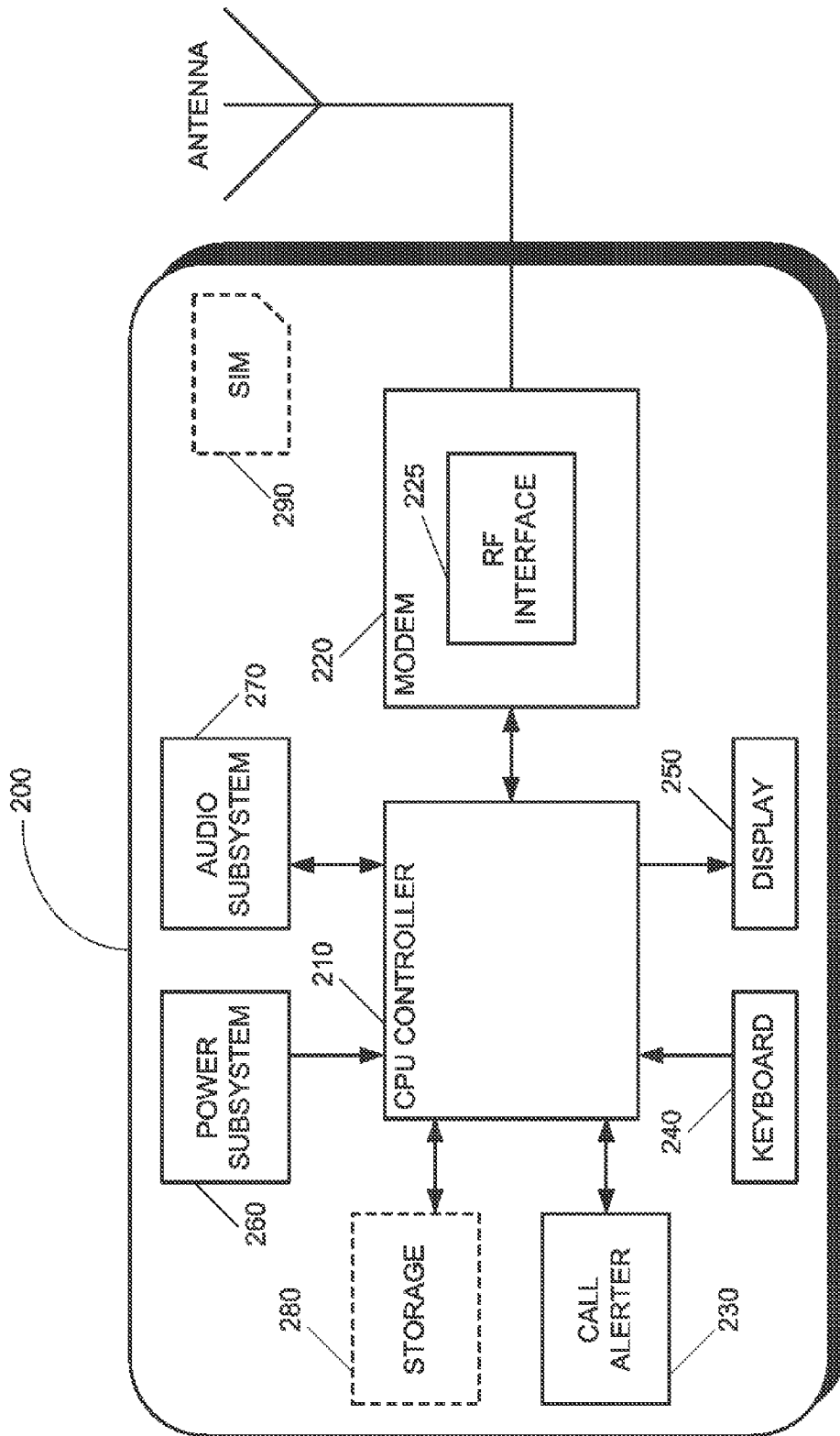


FIG. 2

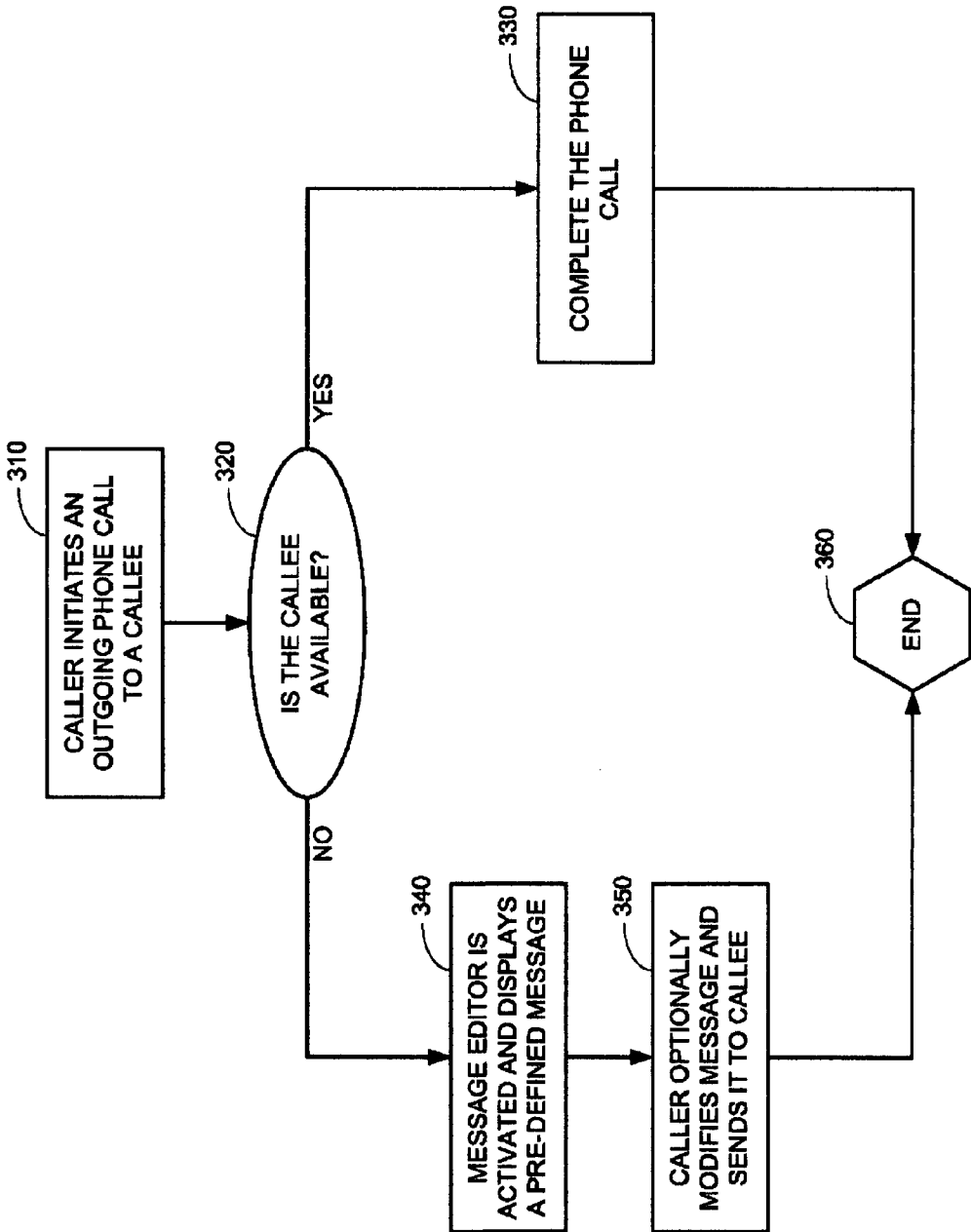


FIG. 3

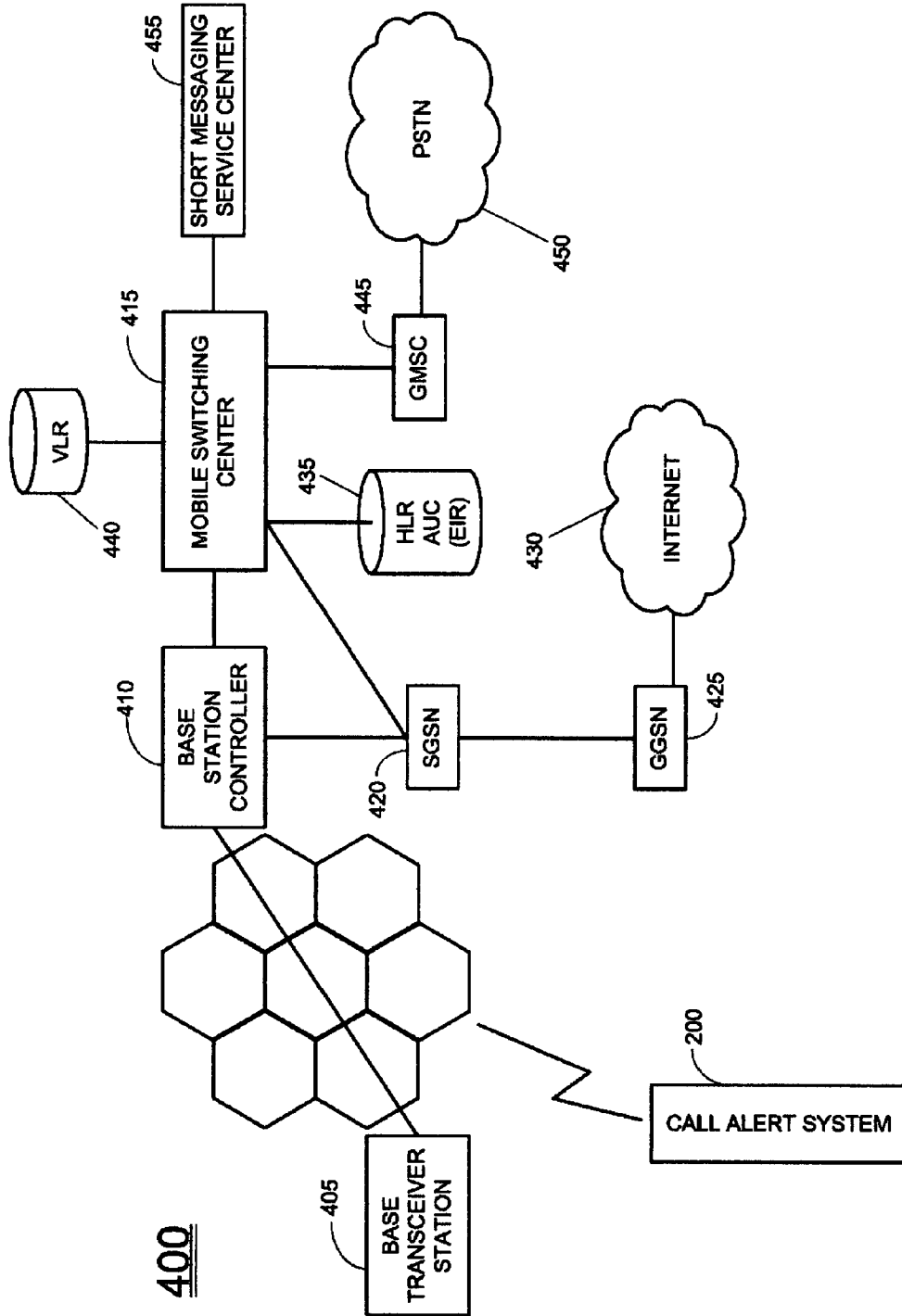


FIG. 4

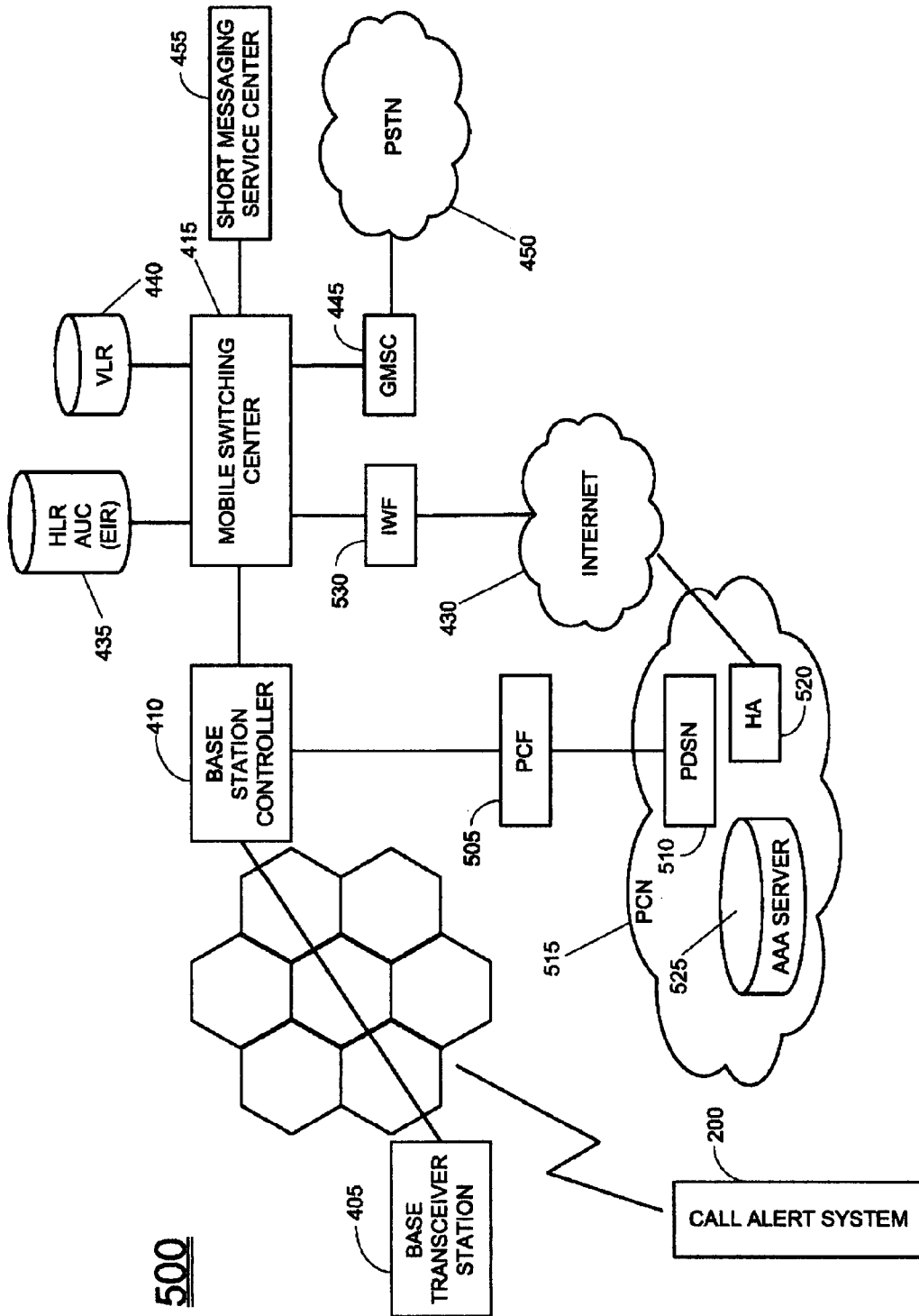


FIG. 5

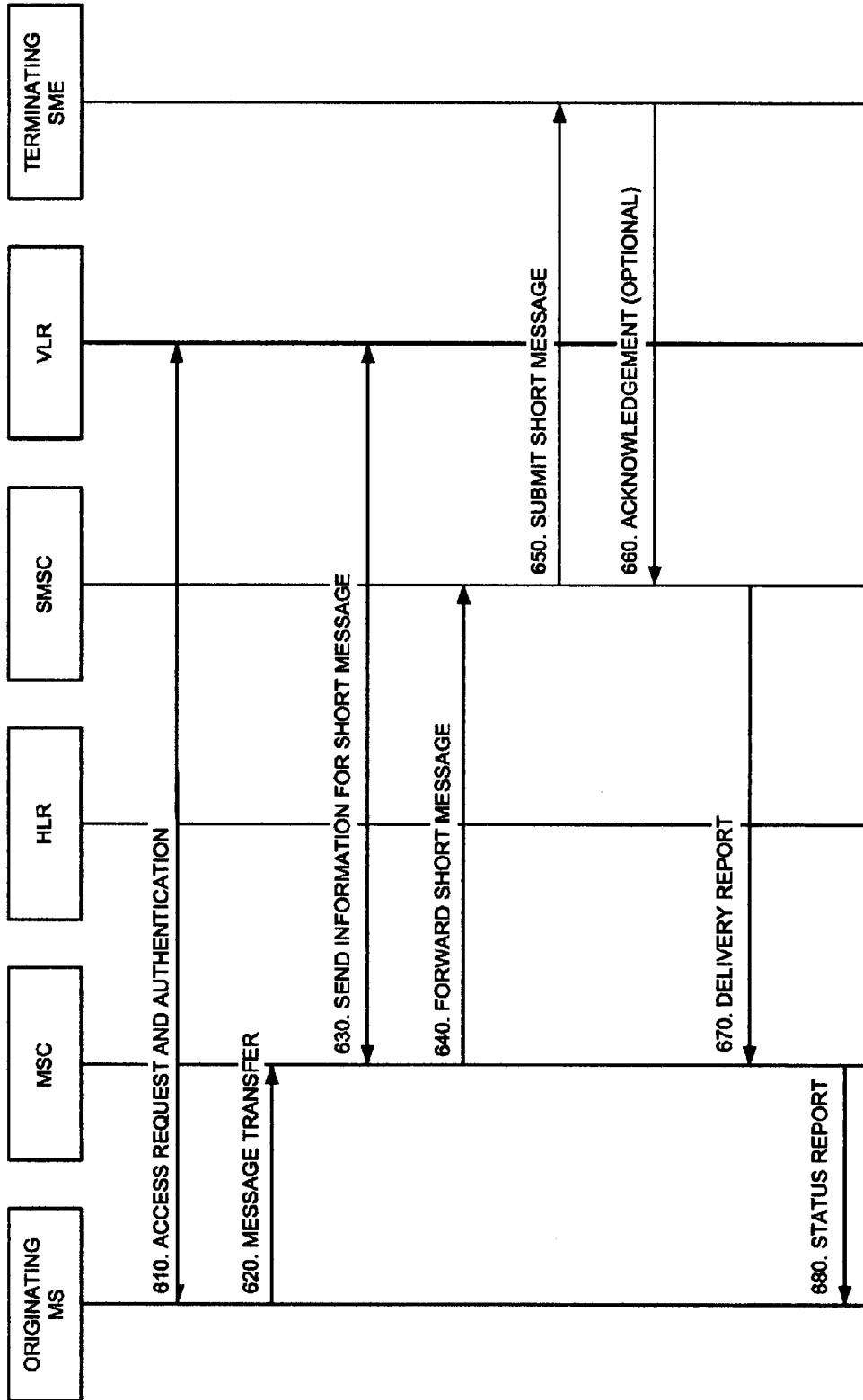


FIG. 6

1

UNSUCCESSFUL CALL ALERT

FIELD OF THE INVENTION

The field of the present invention is phone call notification. 5

BACKGROUND OF THE INVENTION

Today's mobile phones have various ways of notifying mobile phone users that someone called them but was unable to reach them. Three such prior art notification methods and their respective drawbacks are described below.

Notification Method:

If a caller, A, calls a callee, B, but is unable to reach B then, in certain circumstances, A may leave a message on B's voice mail service. 15

Drawbacks:

If B's voice mail is full then A is generally unable to leave a voice message.

Caller A may not wish to leave a voice message. 20

Notification Method:

If a caller, A, calls a callee, B, and is unable to reach B, then in certain circumstances B's mobile phone will record an identifier of the caller and the date & time of the call in a "Missed Calls" log. 25

Drawbacks:

The Missed Calls log is only able to log calls that were made to B when B was located within a cell coverage area and B's mobile phone was turned on. Calls made to B when B was located in an area without cell coverage, or when B's mobile phone was turned off, are generally not recorded. 30

If A has a blocked or an unlisted phone number, then A is not identified in B's Missed Calls log, making it impossible for B to return the call.

If A has a listed un-blocked phone number, but B does not recognize it, then B may decide to discard the notification and not return the call.

Notification Method:

If a caller, A, calls a callee, B, and is unable to reach B, then in certain circumstances, A's cellular service provider sends an SMS message to B's mobile phone with information about the missed call, including an identifier of the caller, and the date & time of the call. 40

Drawbacks:

If A has a blocked or an unlisted phone number, then A is not identified in B's Missed Calls log, making it impossible for B to return the call. 45

If A has a listed un-blocked phone number, but B does not recognize it, then B may decide to discard the notification and not return the call. 50

There is thus a need for alerting a callee, B, that a caller, A, called him but was unable to reach him, in a way that overcomes the above drawbacks, and without sacrificing A's security and B's privacy. 55

SUMMARY OF THE DESCRIPTION

Aspects of the present invention concern a method and system for unsuccessful call alert, that automatically activates an SMS text message editor, an MMS message editor, an e-mail editor, or a plurality of such editors, when an unsuccessful call is detected. The SMS, MMS, or e-mail editor automatically prepares a message, according to a prescribed message format, and sends the message from a caller, A, to a callee, B. Additionally, A can modify the message prior to its being sent to B. 65

2

The present invention overcomes drawbacks of prior art notification methods. By using SMS messages, MMS messages, or e-mail messages (referred to henceforth collectively as "messages"), instead of voice mail, the present invention overcomes failures when B's voice mail is full. Messages may be sent to B when B's mobile phone is busy. In case of emergency, B is able to receive A's message while B is speaking to someone else on his mobile phone, and thus be alerted right away. Messages may be sent to B when B's mobile phone is turned off, and B will receive the messages when he turns his mobile phone on. Moreover, by enabling caller A to edit the message, A may leave his blocked or unlisted phone number for B to return the call or, if A prefers not to disclose his blocked or unlisted number, he may leave an alternate return call phone number or provide other contact information such as an e-mail address.

There is thus provided in accordance with an embodiment of the present invention a method for a mobile phone to provide an unsuccessful call alert, including monitoring an outgoing call from a caller to a callee to determine if the callee is available, if the callee is not available, then automatically activating a message editor, automatically displaying a pre-defined call alert message, including an identifier of the caller and contact information for the caller, enabling the caller to edit the pre-defined call alert message, and sending the call alert message to the callee.

BRIEF DESCRIPTION OF THE DRAWINGS

The present invention will be more fully understood and appreciated from the following detailed description, taken in conjunction with the drawings in which:

FIG. 1 is an illustration of an unsuccessful call alert, to alert a callee that a caller called him but was unable to reach him, in accordance with an embodiment of the present invention; 35

FIG. 2 is a simplified block diagram of an unsuccessful call alert system, for alerting a callee that a caller called him but was unable to reach him, in accordance with an embodiment of the present invention;

FIG. 3 is a simplified flow chart of a method for alerting a callee that a caller called him but was unable to reach him, in accordance with an embodiment of the present invention;

FIG. 4 is a simplified illustration of an exemplary GSM communication network including an unsuccessful call alert system, in accordance with an embodiment of the present invention; 45

FIG. 5 is a simplified illustration of an exemplary CDMA communication network including an unsuccessful call alert system, in accordance with an embodiment of the present invention; and

FIG. 6 is a simplified flowchart of how a mobile-originated short message with an unsuccessful call alert is transferred over a GSM network, in accordance with an embodiment of the present invention. 50

DETAILED DESCRIPTION

Aspects of the present invention relate to automatically notifying a mobile phone user that a caller called him but was unable to reach him. When the caller, A, tries to call a callee, B, and is unable to reach him, caller A's mobile phone automatically activates a message editor, such as an SMS message editor, an MMS message editor, or an e-mail message editor, or a plurality of such editors (referred to henceforth collectively as "message editors"), and initializes a pre-designated message to send to B. Caller A may (i) send the pre-designated message as is, (ii) edit the pre-designated message and 65

then send the edited message, or (iii) not send a message. In cases (i) and (ii), the message will be delivered to B in order that B be aware of the call he missed.

Reference is now made to FIG. 1, which is an illustration of an unsuccessful call alert, to alert a callee that a caller called him but was unable to reach him, in accordance with an embodiment of the present invention. Shown in FIG. 1 is the callee's mobile phone 100, displaying an SMS message 110 indicating that the callee missed a call. Message 110 is pre-designated to be of the form "C tried to reach you at T, D. Please call back to telephone number N". The parameters C, T, D and N are respectively, the caller's name, the time, the date and the caller's telephone number. The text strings for these parameters are evaluated in real-time when message 110 is initialized. If the date and time have not been set in the caller's mobile phone 100, then message 110 is instead generated in an abridged form "C tried to reach you. Please call back to telephone number N". The caller may edit the abridged message to add the date and time, prior to sending the message.

In one embodiment of the present invention, when caller A's call is not answered by callee B, caller A's mobile phone automatically offers the choice of which type of message to send: an SMS message, an MMS message, or an e-mail message. Based on caller A's choice, the appropriate message editor is automatically activated, and the pre-designated message is initialized.

Reference is now made to FIG. 2, which is a simplified block diagram of an unsuccessful call alert system 200, for alerting a callee that a caller called him but was unable to reach him, in accordance with an embodiment of the present invention. As shown in FIG. 2, call alert system 200 includes three primary components; namely, a CPU controller 210, a modem 220, and a call alerter 230. Modem 220 includes an RF interface 225 connected to an antenna. Operation of call alerter 230 is described hereinbelow with reference to FIG. 3.

System 200 also includes a keyboard 240 for input, a display 250 for output, a power subsystem 260, and an audio subsystem 270. Optionally, system 200 may also include a storage memory 280 and a SIM card 290.

Reference is now made to FIG. 3, which is a flow chart of a method, performed by call alerter 230 of FIG. 2, for alerting a callee that a caller called him but was unable to reach him, in accordance with an embodiment of the present invention. At step 310, a caller places an outgoing call on his mobile phone to a callee. At step 320, a determination is made whether or not the callee is available. A callee may not be available for a variety of reasons. The callee's phone may be turned off. The callee's phone may be busy. The callee may not wish to answer the call. The callee's phone may forward to a voice mailbox, but the caller does not want to leave a voice message. Generally, the determination at step 320 may be based on call duration; e.g., a duration shorter than 10 seconds may be used as an indicator that the callee is not available.

If it is determined at step 320 that the callee is available, then the call is completed at step 330, and the method ends at step 360. Otherwise, if it is determined at step 320 that the callee is unavailable, then at step 340 a message editor on the caller's mobile phone is activated. The message editor displays a pre-defined message, with text string parameters that are evaluated at run-time. An example of such a pre-defined message is message 110 of FIG. 1.

Activation of the message editor at step 340 may be automatically performed by the caller's mobile phone, or manually performed by the caller. Manual activation may be triggered by the caller pressing an "End" button during the phone

call. Alternatively, or additionally, a dedicated button may be used for activating the message editor. Some Nokia cell phones, for example, such as the Nokia 6100 model series, include an "Options" button that a caller may press in order to disconnect a call, or perform other functions with his cell phone. Such an "Options" button may be used for activating the message editor at step 340, in accordance with an embodiment of the present invention.

At step 350 the caller is able to edit the pre-defined message. For example, if the caller's mobile phone number is blocked or unlisted, then the caller may substitute a different phone number for the return call, or may provide other contact information such as an e-mail address. The caller sends the message to the callee, and the method then ends at step 360.

It will thus be appreciated by those skilled in the art that the present invention provides a robust method and system for unsuccessful call alert that overcomes drawbacks of prior art methods and systems. By using messages instead of voice mail, the present invention overcomes failures when B's voice mail is full or when B is outside of a cell coverage area.

Messages may be sent to B when B's mobile phone is busy. In case of emergency, B is able to receive A's message while B is speaking to someone else on his mobile phone. B can then terminate his call, at B's discretion, and contact A immediately.

Messages may be sent to B when B's mobile phone is turned off, and B will receive the messages when he turns his mobile phone on.

By enabling caller A to edit the message, A may leave his blocked or unlisted phone number for B to return the call or, if A prefers not to disclose his blocked or unlisted number, he may leave an alternate return call phone number or provide other contact information such as an e-mail address.

The call alert system of the present invention may be implemented within a variety of wireless communication networks, including inter alia GSM and CDMA. These exemplary networks are respectively illustrated in FIGS. 4 and 5 hereinbelow.

Reference is now made to FIG. 4, which is a simplified illustration of an exemplary GSM communication network 400, within which call alert system 200 is operative, in accordance with an embodiment of the present invention.

Communication network 400 is a General Packet Radio Service (GPRS) network. GPRS is a packet-switched service for the Global System for Mobile Communications (GSM), similar to the Internet. GPRS provides packet radio access for mobile GSM users. GPRS also supports Wireless Application Protocol (WAP) services.

Call alert system 200 communicates with a base transceiver station (BTS) 405 via an over-the-air interface. Base transceiver stations are components of communication network 400 that terminate the over-the-air interface, over which subscriber traffic is communicated to and from call alert system 200. Communication network 400 also includes a base station controller (BSC) 410. Base station controllers are switching modules that provide handoff functions and power level control in base transceiver stations.

BSC 410 is controlled by a mobile switching center (MSC) 415. MSC 415 performs functions of a landline network switching node, including search, signal path switching, and processing of supplementary services. When a request is made for connecting to a subscriber in a landline network, the request is forwarded by MSC 415 to the landline network over a switching path.

BSC 410 controls the interface between MSC 415 and BTS 405, and, as such, controls BTS 405 in call set-up, signaling, and use of radio channels. BSC 410 also controls the interface

between a serving GPRS support node (SGSN) **420** and BTS **405**. While GSM forms the underlying technology, SGSN **420** is a network element introduced through GPRS technology. Another network element introduced in the GPRS context is the gateway GPRS support node (GGSN) **425**, which acts as a gateway to Internet **430**.

SGSN **420** services call alert system **200** by sending or receiving packets via a base station subsystem, and more specifically via BSC **410**, in the context of GSM systems. SGSN **420** is responsible for delivery of data packets to and from call alert system **200**, within a service area. SGSN **420** also performs packet routing and transfer, mobility management, local link management, authentication and charging functions.

In order to accommodate a multitude of services, a provider of communication network **400** stores various types of data. The provider must know which subscribers are using communication network **400**, and which services the subscribers use. Subscriber profiles, such as the International Mobile Subscriber Identify Number (IMSI), of GPRS subscribers registered with SGSN **420**, are stored in a home location registry (HLR) **435**. The owner of call alert system **200** is such a GPRS subscriber.

To determine whether a subscriber is entitled to use communication network **400**, the network provider maintains an authentication center (AUC) **435**. Generally, AUC **435** includes algorithms and subscriber-related encryption keys, which are used for authentication. AUC **435** determines, inter alia, whether a subscriber has a valid service contract.

The provider of communication network **400** may optionally maintain an equipment identity registry (EIR) **435**, which includes details of mobile transceivers permitted on the network. Generally, EIR **435** stores a "white list", a "grey list" and a "black list". The white list includes mobile phones that function reliably, the grey list includes mobile phones that may be defective, and the black list includes mobile phones which are either faulty or have been reported missing or stolen.

In order to establish a connection to a subscriber's mobile phone, the network provider must determine where the subscriber is located and whether his mobile phone is turned on. Such information is stored in a visitor location registry (VLR) **440**.

MSC **415** is in communication with a gateway MSC (GMSC) **445**, which acts as a gateway to a public-switched telephone network (PSTN) **450**.

MSC **415** is also in communication with a short messaging service center (SMSC) **455**. A short messaging service center stores and forwards SMS messages to and from mobile stations via MSC **415**. When SMSC **455** receives a short message for transmission to a mobile station, SMSC **455** interrogates the current position of the mobile station from HLR **435**.

Reference is now made to FIG. 5, which is a simplified illustration of an exemplary Code Division Multiple Access (CDMA) communication network **500**, within which call alert system **200** transmits unsuccessful call alerts, in accordance with an embodiment of the present invention. The specific communication network shown in FIG. 5 conforms to the CDMA2000 1X standard. Communication network **500** includes several components of FIG. 4; namely, call alert system **200**, base station transceiver **405**, base station controller **410**, mobile switching center **415**, Internet **430**, HLR/AUC/EIR **435**, VLR **440**, GMSC **445**, PSTN **450** and SMSC **455**.

In communication network **500**, BSC **410** is in communication with a packet control function (PCF) **505**. In turn, PCF

505 is in communication with a packet data serving node (PDSN) **510**, which is part of a packet core network (PCN) **515**. A packet core network generally includes a succession of interconnected routers, or such other communication nodes, that carry Internet protocol (IP) data traffic.

PDSN **510** provides both mobility management functions, similar to SGSN **420**, and packet routing functions, similar to GGSN **450**. PDSN **510** serves as a connection point between a radio access network and an IP network, and manages point-to-point sessions between a mobile phone and an IP address.

PCF **505** provides a relay from PDSN **510** to a mobile phone. PCF **505** tracks registration expiration, and ensures that sessions are renewed as necessary. PCF **505** also controls available radio resources, and buffers data received from PDSN **510** when radio resources are not available. PCF **505** also controls dormancy.

PCN **515** also includes a home agent (HA) **520**. Generally, HA **520** manages roaming and handoff of mobile data. HA **520** is used for registration of a mobile IP (MIP), and transfer of mobile packet data in PDSN **510**. Through tunneling, HA **520** transfers MIP data from a home network to PDSN **510**, and from PDSN **510** to the home network through a reverse tunnel.

PCN **515** also includes an authentication, authorization and accounting (AAA) server **525**. Generally, AAA server **525** is responsible for access control. AAA server **525** processes user requests for access to computer resources and, for enterprises, provides authentication, authorization and accounting services. Authentication is used to identify subscribers. Authorization is used to manage policies and service profiles that govern which resources and services a subscriber may access, and to manage and distribute security keys. Accounting services track usage of time and data resources, and manage billing. AAA server **525** interacts with network access and gateway servers, and with databases and directories containing user information.

In communication network **500**, MSC **415** is in communication with an interworking function (IWF) **530**. An interworking function provides an interface between wireless data networks and data packet networks such as Internet **430** or corporate intranets, and also between wireless data networks and wireline networks such as PSTN **450**. The interworking function converts and sends data to a data packet network or a wireline network, based on the data type. Generally, IWF **530** includes modems or data terminal adapters, or both, to convert data transmitted over a wireless network to a format suitable for recognition and carrying by a public telecommunications network.

Reference is now made to FIG. 6, which is a simplified flowchart of how a mobile-originated short message with an unsuccessful call alert is transferred over a GSM network, such as network **400**, in accordance with an embodiment of the present invention. At step **610** call alert system **200** is powered on and its messaging service, referred to as the "originating messaging service (MS)", is registered with network **400**. Access request and authentication are exchanged between the originating messaging service and a visitor location registry (VLR), such as VLR **440**.

At step **620** the originating messaging service transfers a call alert short message, in accordance with the present invention, to a mobile switching center (MSC), such as MSC **415**. At step **630** the MSC interrogates the VLR to verify that short message transfer does not violate restrictions of revoked services of the owner of call alert system **200**.

If verification is confirmed, then at step **640** the MSC sends the short message to a short messaging service center

7

(SMSC), using a forwardShortMessage() operation. At step **650** the SMSC delivers the short message to its destination, referred to as the “terminating short message entity (SME)”. At step **660**, the terminating SME sends an acknowledgement to the SMSC. Step **660** is optional.

At step **670** the SMSC sends the MSC an acknowledgement with the successful or unsuccessful outcome of the forwardShortMessage() operation. Finally, at step **680** the MSC returns to the originating MS an acknowledgement of whether or not the mobile originated short message was successfully delivered.

In the foregoing specification, the invention has been described with reference to specific exemplary embodiments thereof. It will, however, be evident that various modifications and changes may be made to the specific exemplary embodiments without departing from the broader spirit and scope of the invention as set forth in the appended claims. Accordingly, the specification and drawings are to be regarded in an illustrative rather than a restrictive sense.

What is claimed is:

1. A method for a mobile phone to provide an unsuccessful call alert, comprising:

monitoring, by a caller’s mobile phone, an outgoing call from a caller to a callee to determine if the callee is available;

if the callee is not available, then:

automatically presenting, by the caller’s mobile phone, the caller with an option of sending an e-mail message to the callee; and

if the caller selects the option, then:

automatically activating, by the caller’s mobile phone, an e-mail message editor;

automatically generating, by the activated e-mail message editor, a call alert message; and

sending, by the caller’s mobile phone, the call alert message to the callee.

8

2. The method of claim **1** wherein said automatically generating comprises generating a date and time in the call alert message.

3. The method of claim **1** further comprising entering, by the activated e-mail message generator, a phone number for returning the call into the call alert message.

4. The method of claim **1** further comprising entering, by the activated e-mail message generator, an e-mail address for the caller.

5. The method of claim **1** wherein said monitoring determines if the callee is available based on duration of the call.

6. A call alert apparatus, comprising:

a modem for enabling a caller to place an outgoing call to a callee, and for sending a call alert message to the callee;

an e-mail message editor, for generating a call alert message;

a call alerter for monitoring the outgoing call from the caller to the callee to determine if the callee is available, and, if the callee is not available, then automatically presenting the caller with an option of sending an e-mail message to the callee, and activating said e-mail message editor in response to the caller selecting the option.

7. The call alert apparatus of claim **6** wherein the call alert message generated by said message editor comprises a date and time.

8. The call alert apparatus of claim **6** wherein said message editor enters a phone number for returning the call in the call alert message.

9. The call alert apparatus of claim **6** wherein said message editor enters an e-mail address for the caller in the call alert message.

10. The call alert apparatus of claim **6** wherein said call alerter determines if the callee is available based on duration of the call.

* * * * *