

augmented attacker map by augmenting the attack paths based on the decoy attack vectors added by the deployment module.

8 Claims, 7 Drawing Sheets

Related U.S. Application Data

- (60) Provisional application No. 62/172,251, filed on Jun. 8, 2015, provisional application No. 62/172,253, filed on Jun. 8, 2015, provisional application No. 62/172,255, filed on Jun. 8, 2015, provisional application No. 62/172,259, filed on Jun. 8, 2015, provisional application No. 62/172,261, filed on Jun. 8, 2015.

(58) **Field of Classification Search**

USPC 726/11, 22–26; 709/206, 220, 224, 228; 455/410; 714/43

See application file for complete search history.

(56) **References Cited**

U.S. PATENT DOCUMENTS

7,065,657 B1	6/2006	Moran	
7,089,589 B2	8/2006	Chefalas et al.	
7,093,291 B2	8/2006	Bailey	
7,516,227 B2 *	4/2009	Cohen	H04L 29/12009 709/220
7,574,741 B2	8/2009	Aviani et al.	
7,636,944 B2	12/2009	Raikar	
7,665,134 B1	2/2010	Hernacki et al.	
7,694,339 B2	4/2010	Blake et al.	
7,725,937 B1	5/2010	Levy	
7,752,664 B1	7/2010	Satish et al.	
7,945,953 B1	5/2011	Salinas et al.	
8,015,284 B1	9/2011	Isenberg et al.	
8,181,249 B2	5/2012	Chow et al.	
8,181,250 B2	5/2012	Rafalovich et al.	
8,250,654 B1	8/2012	Kennedy et al.	
8,375,447 B2	2/2013	Amoroso et al.	
8,499,348 B1	7/2013	Rubin	
8,528,091 B2	9/2013	Bowen et al.	
8,549,642 B2	10/2013	Lee	
8,549,643 B1 *	10/2013	Shou	G06F 21/556 455/410
8,719,938 B2	5/2014	Chasko et al.	
8,739,281 B2	5/2014	Wang et al.	
8,739,284 B1	5/2014	Gardner	
8,769,684 B2	7/2014	Stolfo et al.	
8,819,825 B2	8/2014	Keromytis et al.	
8,856,928 B1	10/2014	Rivner et al.	
8,925,080 B2	12/2014	Hebert	
9,009,829 B2	4/2015	Stolfo et al.	
9,043,905 B1	5/2015	Allen et al.	
9,124,622 B1	9/2015	Falkowitz et al.	
9,152,808 B1	10/2015	Ramalingam et al.	
9,240,976 B1	1/2016	Murchison	
9,325,728 B1	4/2016	Kennedy et al.	
9,356,942 B1	5/2016	Joffe	
9,495,188 B1	11/2016	Ettema et al.	
2002/0066034 A1	5/2002	Schlossberg et al.	
2003/0084349 A1	5/2003	Friedrichs et al.	
2003/0145224 A1	7/2003	Bailey	
2004/0088581 A1	5/2004	Brawn et al.	
2004/0160903 A1	8/2004	Gai et al.	
2004/0172557 A1	9/2004	Nakae et al.	
2004/0255155 A1	12/2004	Stading	
2005/0114711 A1	5/2005	Hesselink et al.	
2005/0132206 A1	6/2005	Palliyil et al.	
2005/0149480 A1	7/2005	Deshpande	
2005/0235360 A1	10/2005	Pearson	
2006/0041761 A1	2/2006	Neumann et al.	

2006/0101516 A1	5/2006	Sudaharan et al.
2006/0161982 A1	7/2006	Chari et al.
2006/0224677 A1	10/2006	Ishikawa et al.
2006/0242701 A1	10/2006	Black et al.
2007/0028301 A1	2/2007	Shull et al.
2007/0157315 A1	7/2007	Moran
2007/0192853 A1	8/2007	Shraim et al.
2008/0016570 A1	1/2008	Capalik
2008/0086773 A1	4/2008	Tuvell et al.
2008/0155693 A1	6/2008	Mikan et al.
2009/0019547 A1	1/2009	Palliyil et al.
2009/0144827 A1	6/2009	Peinado et al.
2009/0222920 A1	9/2009	Chow et al.
2009/0241191 A1	9/2009	Keromytis et al.
2009/0241196 A1	9/2009	Troyansky et al.
2009/0328216 A1	12/2009	Rafalovich et al.
2010/0058456 A1	3/2010	Jajodia et al.
2010/0071051 A1	3/2010	Choyi et al.
2010/0077483 A1	3/2010	Stolfo et al.
2010/0082513 A1	4/2010	Liu
2010/0251369 A1	9/2010	Grant
2010/0269175 A1	10/2010	Stolfo et al.
2011/0016527 A1	1/2011	Yanovsky et al.
2011/0154494 A1	6/2011	Sundaram et al.
2011/0167494 A1	7/2011	Bowen et al.
2011/0214182 A1	9/2011	Adams et al.
2011/0258705 A1	10/2011	Vestergaard et al.
2011/0307705 A1	12/2011	Fielder
2012/0005756 A1	1/2012	Hoefelmeyer et al.
2012/0084866 A1	4/2012	Stolfo
2012/0167208 A1	6/2012	Buford et al.
2012/0210388 A1	8/2012	Kolishchak
2012/0246724 A1	9/2012	Sheymov et al.
2012/0311703 A1	12/2012	Yanovsky et al.
2013/0061055 A1	3/2013	Schibuk
2013/0086691 A1	4/2013	Fielder
2013/0212644 A1	8/2013	Hughes et al.
2013/0227697 A1	8/2013	Zandani
2013/0263226 A1	10/2013	Sudia
2014/0101724 A1	4/2014	Wick et al.
2014/0115706 A1	4/2014	Silva et al.
2014/0201836 A1	7/2014	Amsler
2014/0208401 A1	7/2014	Balakrishnan et al.
2014/0259095 A1	9/2014	Bryant
2014/0298469 A1	10/2014	Marion et al.
2014/0310770 A1	10/2014	Mahaffey
2014/0337978 A1	11/2014	Keromytis et al.
2014/0359708 A1	12/2014	Schwartz
2015/0007326 A1	1/2015	Mooring et al.
2015/0013006 A1	1/2015	Shulman et al.
2015/0047032 A1	2/2015	Hannis et al.
2015/0074750 A1	3/2015	Pearcy et al.
2015/0074811 A1	3/2015	Capalik
2015/0096048 A1	4/2015	Zhang et al.
2015/0128246 A1	5/2015	Feghali et al.
2015/0326587 A1	11/2015	Vissamsetty et al.
2016/0019395 A1	1/2016	Ramalingam et al.
2016/0080414 A1	3/2016	Kolton et al.
2016/0212167 A1	7/2016	Dotan et al.
2016/0261608 A1	9/2016	Hu et al.
2016/0308895 A1	10/2016	Kotler et al.
2016/0323316 A1	11/2016	Kolton et al.
2016/0373447 A1	12/2016	Akiyama et al.

OTHER PUBLICATIONS

Wikipedia, Apple Filing Protocol, https://en.wikipedia.org/wiki/Apple_Filing_Protocol, Aug. 14, 2015.

Wikipedia, DMZ (computing), [https://en.wikipedia.org/wiki/DMZ_\(computing\)](https://en.wikipedia.org/wiki/DMZ_(computing)), Jun. 17, 2015.

Wikipedia, Domain Name System, https://en.wikipedia.org/wiki/Domain_Name_System, Jul. 14, 2015.

Wikipedia, Firewall (computing), [https://en.wikipedia.org/wiki/Firewall_\(computing\)](https://en.wikipedia.org/wiki/Firewall_(computing)), Jul. 14, 2015.

Wikipedia, Honeypot (computing), [https://en.wikipedia.org/wiki/Honeypot_\(computing\)](https://en.wikipedia.org/wiki/Honeypot_(computing)), Jun. 21, 2015.

Wikipedia, Kerberos (protocol), [https://en.wikipedia.org/wiki/Kerberos_\(protocol\)](https://en.wikipedia.org/wiki/Kerberos_(protocol)), Jun. 30, 2015.

(56)

References Cited

OTHER PUBLICATIONS

Wikipedia, Lightweight Directory Access Protocol, https://en.wikipedia.org/wiki/Lightweight_Directory_Access_Protocol, Aug. 15, 2015.
Wikipedia, LM hash, https://en.wikipedia.org/wiki/LM_hash, Jun. 8, 2015.
Wikipedia, RADIUS, <https://en.wikipedia.org/wiki/RADIUS>, Aug. 16, 2015.
Wikipedia, Rainbow table, https://en.wikipedia.org/wiki/Rainbow_table, Jul. 14, 2015.
Wikipedia, Secure Shell, [https://en.wikipedia.org/wiki/HoneyPot_\(computing\)](https://en.wikipedia.org/wiki/HoneyPot_(computing)), Jul. 12, 2015.
Wikipedia, Security Information and Event Management, https://en.wikipedia.org/wiki/Security_information_and_event_management, Jun. 23, 2015.
Wikipedia, Tarpit (networking), [https://en.wikipedia.org/wiki/Tarpit_\(networking\)](https://en.wikipedia.org/wiki/Tarpit_(networking)), Jul. 3, 2014.
U.S. Appl. No. 15/004,904, Non-Final Rejection, May 27, 2016, 16 pages.
U.S. Appl. No. 15/175,050, Non-Final Rejection, Aug. 19, 2016, 34 pages.
U.S. Appl. No. 15/175,050, Final Rejection, Nov. 30, 2016, 31 pages.

PCT Application No. PCT/IL16/50103, International Search Report and Written Opinion, May 26, 2016, 9 pages.
PCT Application No. PCT/IL16/50579, International Search Report and Written Opinion, Sep. 30, 2016, 7 pages.
PCT Application No. PCT/IL16/50581, International Search Report and Written Opinion, Nov. 29, 2016, 10 pages.
PCT Application No. PCT/IL16/50582, International Search Report and Written Opinion, Nov. 16, 2016, 11 pages.
PCT Application No. PCT/IL16/50583, International Search Report and Written Opinion, Dec. 8, 2016, 10 pages.
U.S. Appl. No. 15/004,904, Notice of Allowance, Oct. 19, 2016, 13 pages.
U.S. Appl. No. 15/175,048, Notice of Allowance, Oct. 13, 2016, 17 pages.
U.S. Appl. No. 15/175,050, Notice of Allowance, Mar. 21, 2017, 13 pages.
U.S. Appl. No. 15/175,052, Non-Final Rejection, Feb. 13, 2017, 19 pages.
U.S. Appl. No. 15/175,054, Notice of Allowance, Feb. 21, 2017, 13 pages.
U.S. Appl. No. 15/406,731, Notice of Allowance, Apr. 20, 2017, 15 pages.

* cited by examiner

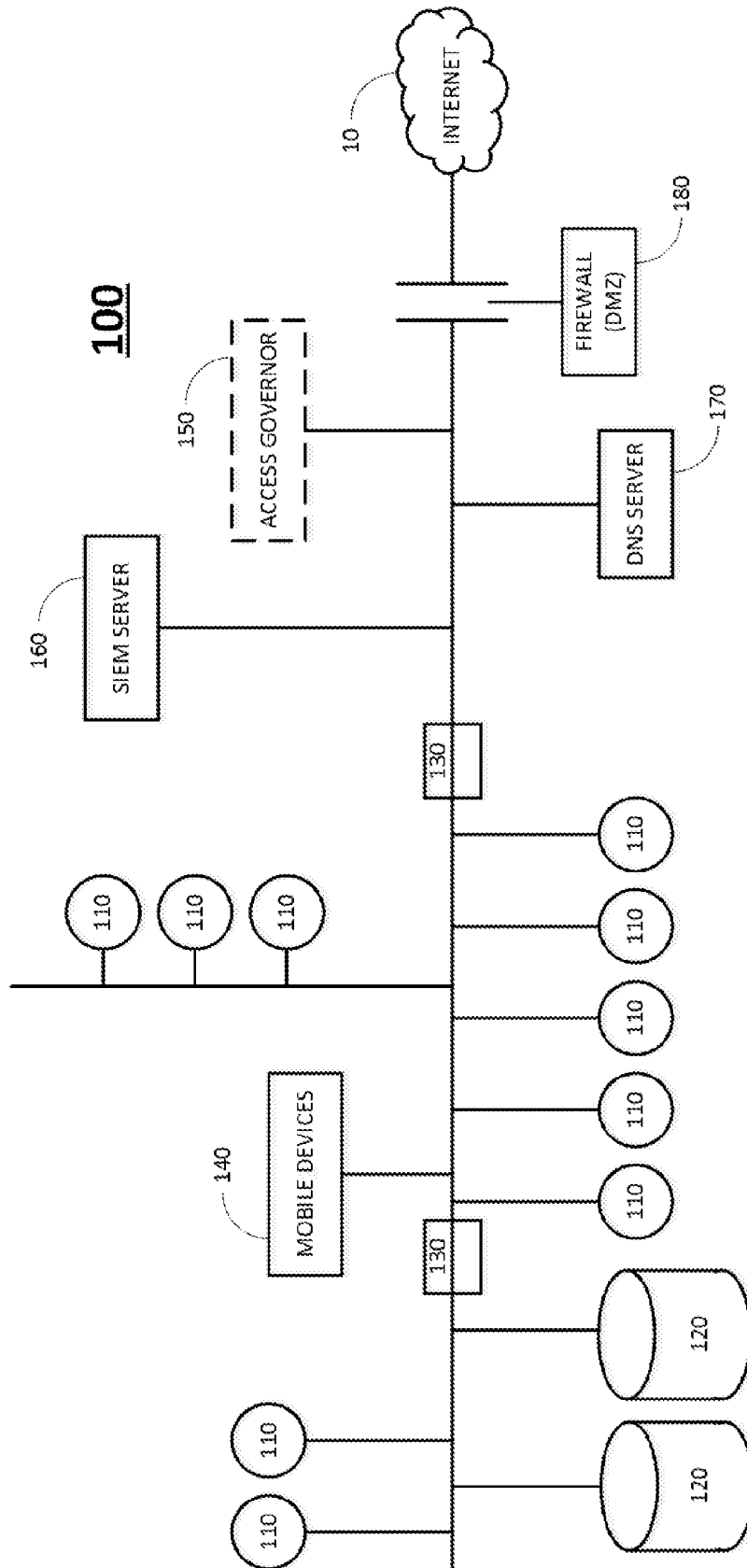


FIG. 1
(PRIOR ART)

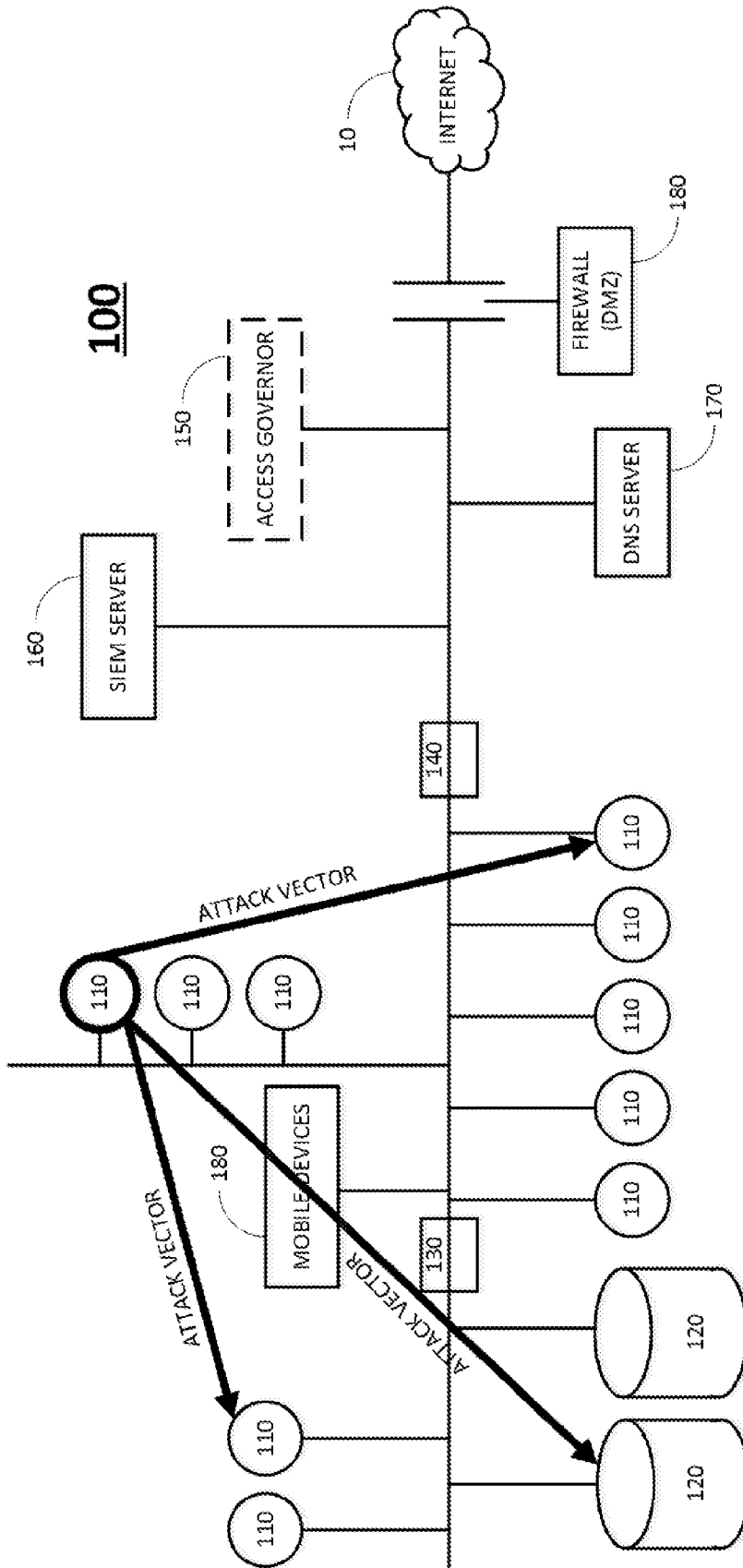


FIG. 2
(PRIOR ART)

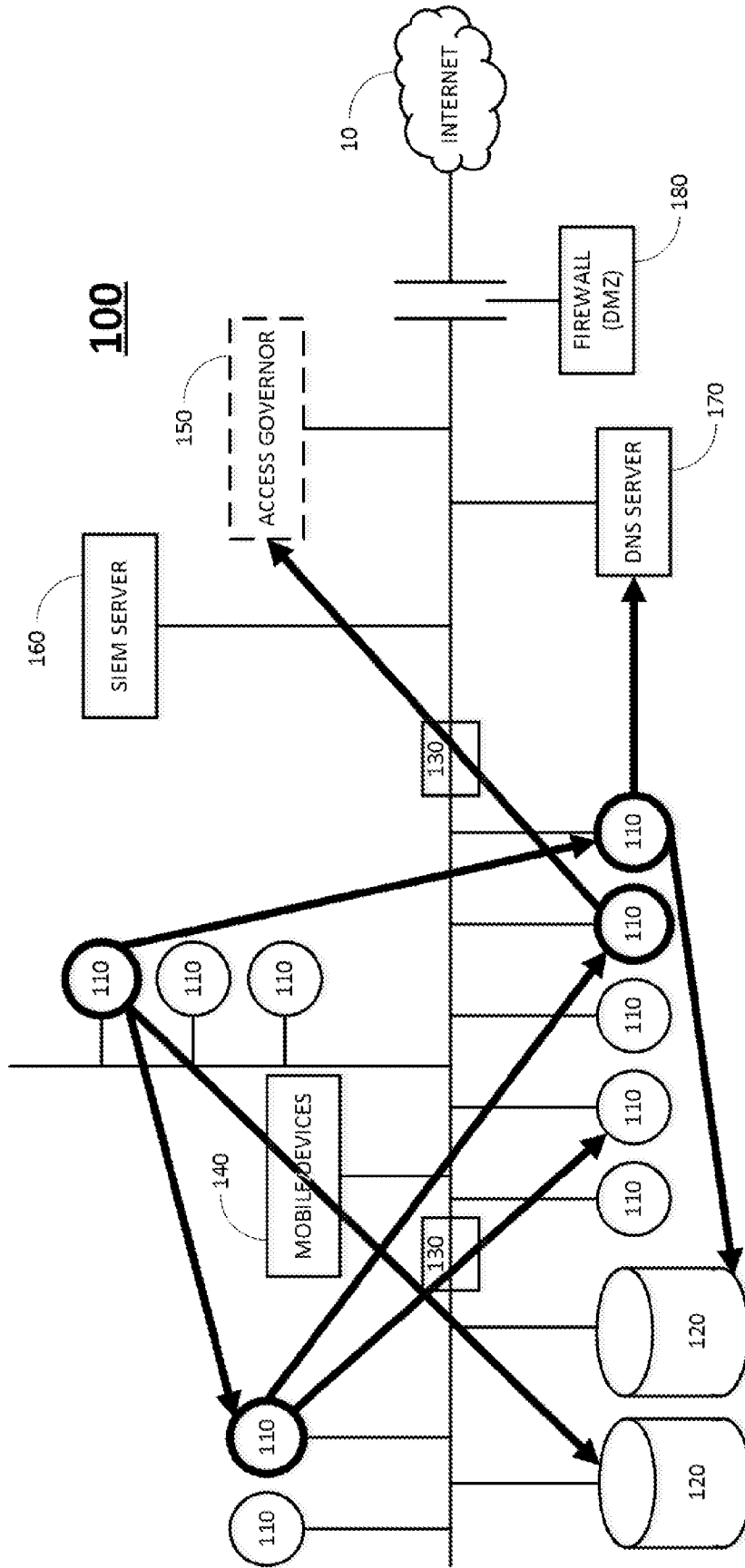


FIG. 3
(PRIOR ART)

1100

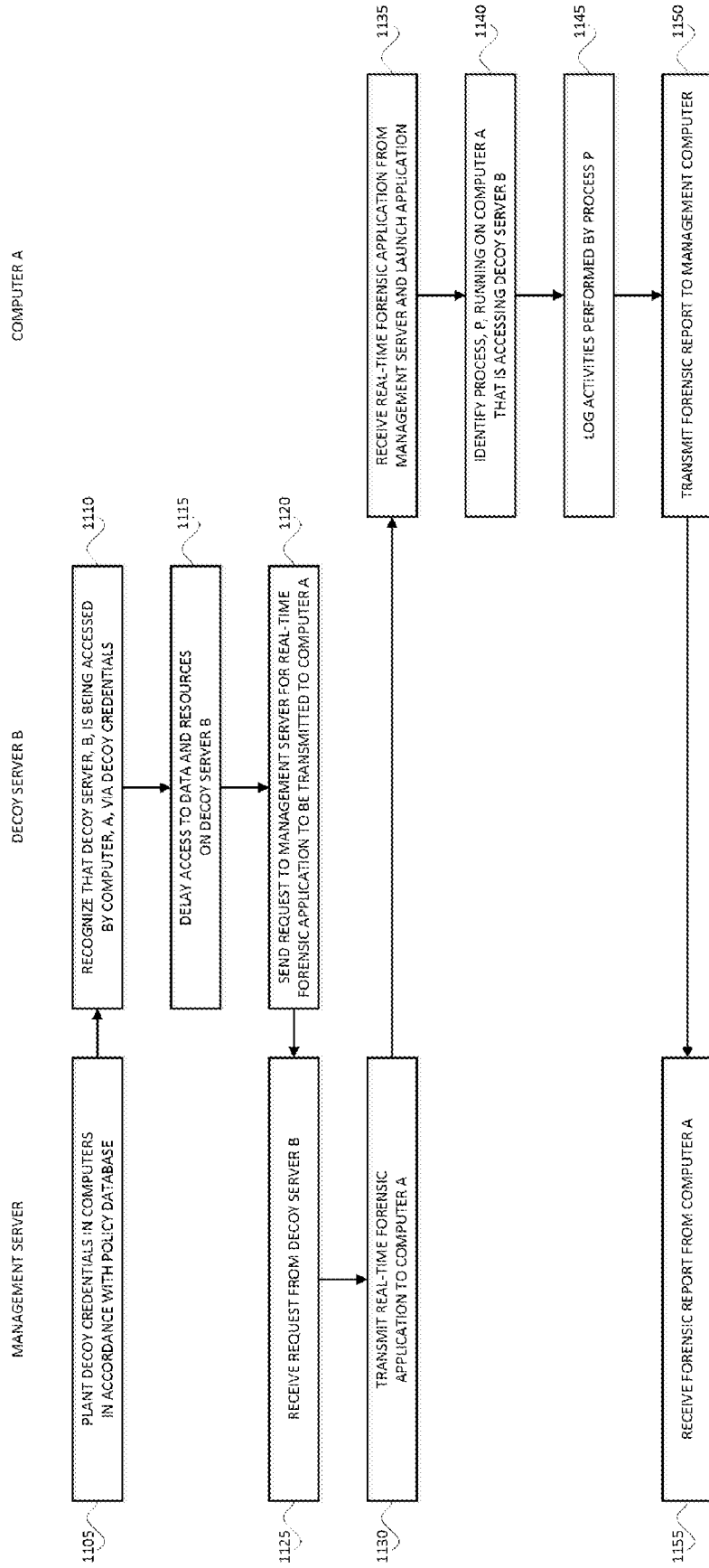


FIG. 5

1200

DIRECTORY SERVICE

MANAGEMENT SERVER

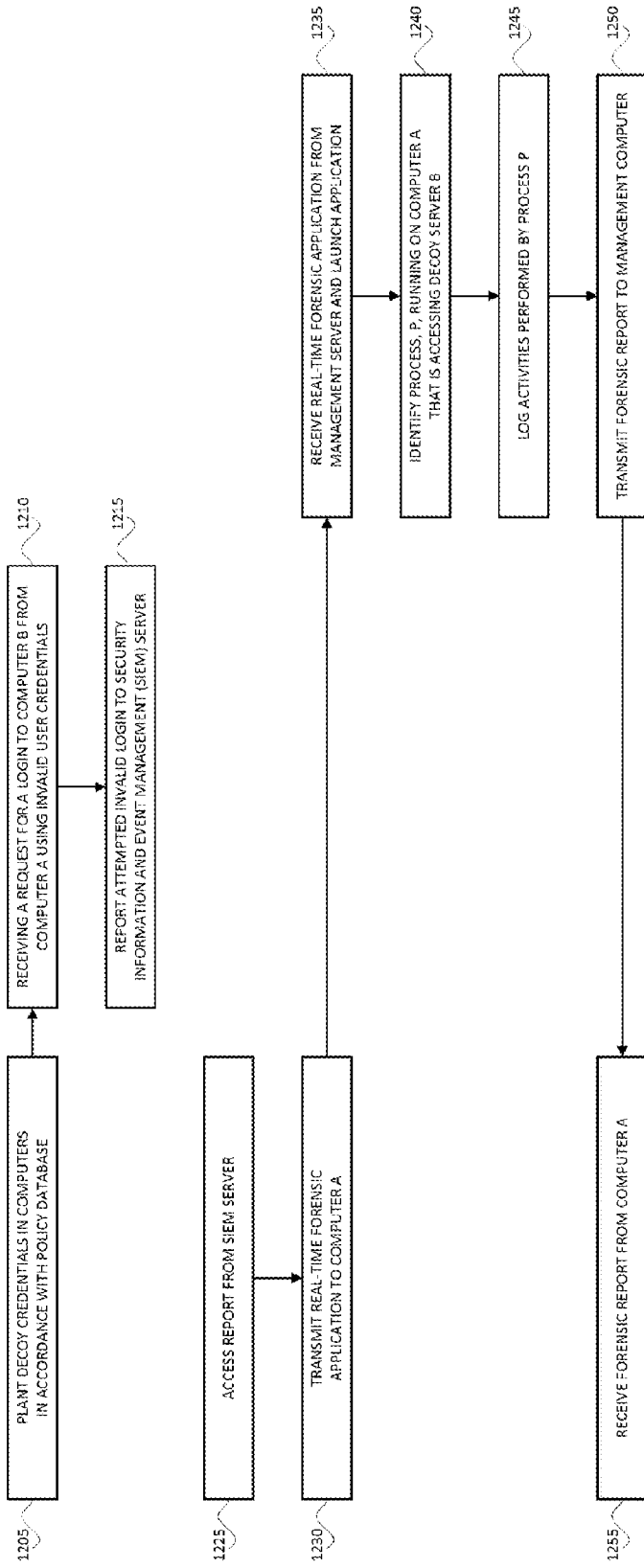


FIG. 6

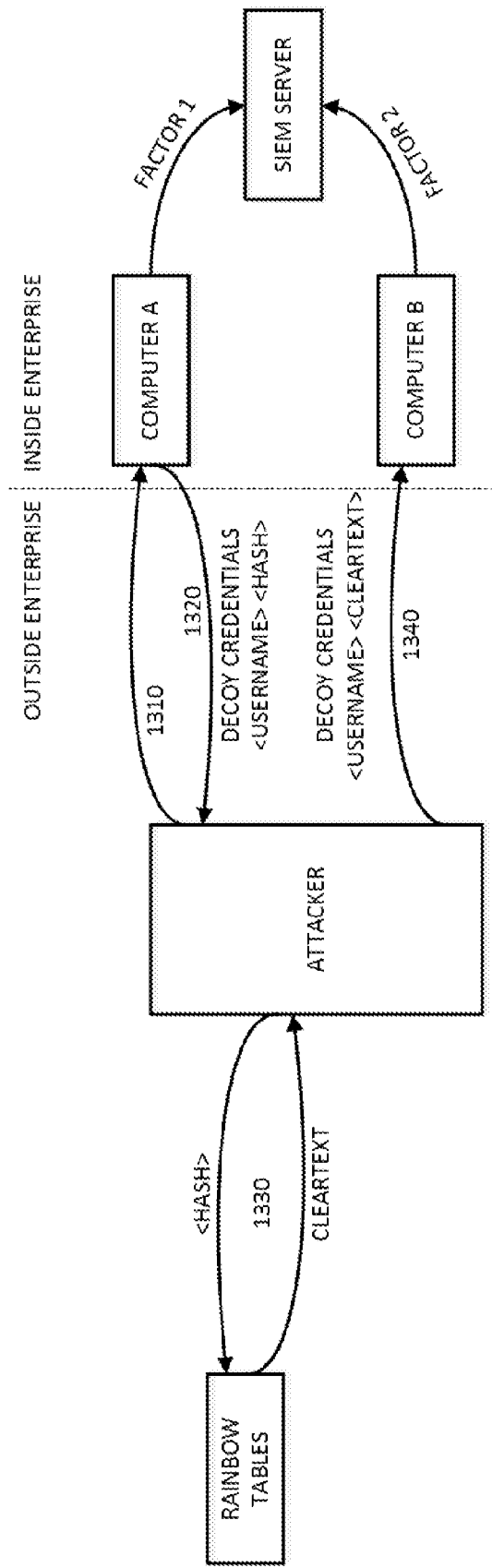


FIG. 7

1

**SYSTEM AND METHOD FOR CREATION,
DEPLOYMENT AND MANAGEMENT OF
AUGMENTED ATTACKER MAP**

CROSS REFERENCES TO RELATED
APPLICATIONS

This application is a continuation of U.S. patent application Ser. No. 15/004,904, now U.S. Pat. No. 9,553,885, entitled SYSTEM AND METHOD FOR CREATION, DEPLOYMENT AND MANAGEMENT OF AUGMENTED ATTACKER MAP, and filed on Jan. 23, 2016 by inventors Shlomo Touboul, Hanan Levin, Stephane Roubach, Assaf Mischari, Itai Ben David, Itay Avraham, Adi Ozer, Chen Kazaz, Ofer Israeli, Olga Vingurt, Liad Gareh, Israel Grimberg, Cobby Cohen, Sharon Sultan and Matan Kubovsky. U.S. patent application Ser. No. 15/004,904 is a non-provisional of U.S. Provisional Application No. 62/172,251, entitled SYSTEM AND METHOD FOR CREATION, DEPLOYMENT AND MANAGEMENT OF AUGMENTED ATTACKER MAP, and filed on Jun. 8, 2015 by inventors Shlomo Touboul, Hanan Levin, Stephane Roubach, Assaf Mischari, Itai Ben David, Itay Avraham, Adi Ozer, Chen Kazaz, Ofer Israeli, Olga Vingurt, Liad Gareh, Israel Grimberg, Cobby Cohen, Sharon Sultan and Matan Kubovsky. The contents of these applications are hereby incorporated by reference herein in their entirety.

U.S. patent application Ser. No. 15/004,904 is a non-provisional of U.S. Provisional Application No. 62/172,253, entitled SYSTEM AND METHOD FOR MULTI-LEVEL DECEPTION MANAGEMENT AND DECEPTION SYSTEM FOR MALICIOUS ACTIONS IN A COMPUTER NETWORK, and filed on Jun. 8, 2015 by inventors Shlomo Touboul, Hanan Levin, Stephane Roubach, Assaf Mischari, Itai Ben David, Itay Avraham, Adi Ozer, Chen Kazaz, Ofer Israeli, Olga Vingurt, Liad Gareh, Israel Grimberg, Cobby Cohen, Sharon Sultan and Matan Kubovsky, the contents of which are hereby incorporated by reference herein in their entirety.

U.S. patent application Ser. No. 15/004,904 is a non-provisional of U.S. Provisional Application No. 62/172,255, entitled METHODS AND SYSTEMS TO DETECT, PREDICT AND/OR PREVENT AN ATTACKER'S NEXT ACTION IN A COMPROMISED NETWORK, and filed on Jun. 8, 2015 by inventors Shlomo Touboul, Hanan Levin, Stephane Roubach, Assaf Mischari, Itai Ben David, Itay Avraham, Adi Ozer, Chen Kazaz, Ofer Israeli, Olga Vingurt, Liad Gareh, Israel Grimberg, Cobby Cohen, Sharon Sultan and Matan Kubovsky, the contents of which are hereby incorporated by reference herein in their entirety.

U.S. patent application Ser. No. 15/004,904 is a non-provisional of U.S. Provisional Application No. 62/172,259, entitled MANAGING DYNAMIC DECEPTIVE ENVIRONMENTS, and filed on Jun. 8, 2015 by inventors Shlomo Touboul, Hanan Levin, Stephane Roubach, Assaf Mischari, Itai Ben David, Itay Avraham, Adi Ozer, Chen Kazaz, Ofer Israeli, Olga Vingurt, Liad Gareh, Israel Grimberg, Cobby Cohen, Sharon Sultan and Matan Kubovsky, the contents of which are hereby incorporated by reference herein in their entirety.

U.S. patent application Ser. No. 15/004,904 is a non-provisional of U.S. Provisional Application No. 62/172,261, entitled SYSTEMS AND METHODS FOR AUTOMATICALLY GENERATING NETWORK ENTITY GROUPS BASED ON ATTACK PARAMETERS AND/OR ASSIGNMENT OF AUTOMATICALLY GENERATED SECURITY POLICIES, and filed on Jun. 8, 2015 by inventors

2

Shlomo Touboul, Hanan Levin, Stephane Roubach, Assaf Mischari, Itai Ben David, Itay Avraham, Adi Ozer, Chen Kazaz, Ofer Israeli, Olga Vingurt, Liad Gareh, Israel Grimberg, Cobby Cohen, Sharon Sultan and Matan Kubovsky, the contents of which are hereby incorporated by reference herein in their entirety.

FIELD OF THE INVENTION

The present invention relates to computer security, and in particular to computer network surveillance.

BACKGROUND OF THE INVENTION

Reference is made to FIG. 1, which is a simplified diagram of a prior art enterprise network **100** connected to an external internet **10**. Network **100** is shown generally with resources including computers **110**, databases **120**, switches and routers **130**, and mobile devices **140** such as smart phones and tablets, for ease of presentation, although it will be appreciated by those skilled in the art that enterprise networks today are generally much more complex and include other devices such as printers, other types of network elements such as relays, and any Internet of Things objects. The various connections shown in FIG. 1 may be direct or indirect, wired or wireless communications, or a combination of wired and wireless connections. Computers **110** and databases **120** may be physical elements or logical elements, or a mix of physical and logical elements. Computers **110** and databases **120** may be virtual machines. Computer **110** and databases **120** may be local, remote or cloud-based elements, or a mix of local, remote and cloud-based elements. Computers **110** may be client workstation computers, or server computers including inter alia file transfer protocol (FTP) servers, email servers, structured query language (SQL) servers, secure shell (SSH) servers and other application servers, or a mix of client and server computers. A corporate information technology (IT) department manages and controls network **100** in order to serve the corporate requirements and meet the corporate needs.

Access to computers **110** and servers **120** in network **100** may optionally be governed by an access governor **150**, such as a directory service, that authorizes users to access computers **110** and databases **120** based on "credentials". Access governor **150** may be a name directory, such as ACTIVE DIRECTORY® developed by Microsoft Corporation of Redmond, Wash., for WINDOWS® environments. Background information about ACTIVE DIRECTORY® is available at Wikipedia. Other access governors for WINDOWS and non-WINDOWS environments, include inter alia Lightweight Directory Access Protocol (LDAP), Remote Authentication Dial-In User Service (RADIUS), and Apple Filing Protocol (AFP), formerly APPLE TALK®, developed by Apple Inc. of Cupertino, Calif. Background information about LDAP, RADIUS and AFP is available at Wikipedia.

Access governor **150** may be one or more local machine access controllers. Access governor **150** may be one or more authorization servers, such as a database server or an application server.

In lieu of access governor **150**, the endpoints and/or servers of network **100** determine their local access rights.

Credentials for accessing computers **110** and databases **120** include inter alia server account credentials such as <address> <username> <password> for an FTP server, an SQL server, or an SSH server. Credentials for accessing computers **110** and databases **120** also include user login credentials <username> <password>, or <username>

<ticket>, where “ticket” is an authentication ticket, such as a ticket for the Kerberos authentication protocol or NTLM hash used by Microsoft Corp., or login credentials via certificates or via another implementation used today or in the future. Background information about the Kerberos protocol and the LM hash is available at Wikipedia.

Access governor **150** may maintain a directory of computers **110**, databases **120** and their users. Access governor **150** authorizes users and computers, assigns and enforces security policies, and installs and updates software. When a user logs into a computer **110**, access governor **150** checks the submitted password, and determines if the user is an administrator (admin), a normal user (user) or other user type.

Computers **110** may run a local or remote security service, which is an operating system process that verifies users logging in to computers and other single sign-on systems and other credential storage systems.

Network **100** may include a security information and event management (SIEM) server **160**, which provides real-time analysis of security alerts generated by network hardware and applications. Background information about SIEM is available at Wikipedia.

Network **100** may include a domain name system (DNS) server **170**, or such other name service system, for translating domain names to IP addresses. Background information about DNS is available at Wikipedia.

Network **100** may include a firewall **180** located within a demilitarized zone (DMZ), which is a gateway between enterprise network **100** and external internet **10**. Firewall **180** controls incoming and outgoing traffic for network **100**. Background information about firewalls and DMZ is available at Wikipedia.

One of the most prominent threats that organizations face is a targeted attack; i.e., an individual or group of individuals that attacks the organization for a specific purpose, such as stealing data, using data and systems, modifying data and systems, and sabotaging data and systems. Targeted attacks are carried out in multiple stages, typically including inter alia reconnaissance, penetration, lateral movement and payload. Lateral movement involves orientation, movement and propagation, and includes establishing a foothold within the organization and expanding that foothold to additional systems within the organization.

In order to carry out the lateral movement stage, an attacker, whether a human being who is operating tools within the organization’s network, or a tool with “learning” capabilities, learns information about the environment it is operating in, such as network topology and organization structure, learns “where can I go from my current step” and “how can I go from my current step (privileged required)”, and learns implemented security solutions, and then operates in accordance with that data. One method to defend against such attacks, termed “honeypots”, is to plant and monitor misleading information/decoys/bait, with the objective of the attacker learning of their existence and then consuming those bait resources, and to notify an administrator of the malicious activity. Background information about honeypots is available at Wikipedia.

Conventional honeypot systems operate by monitoring access to a supervised element in a computer network. Access monitoring generates many false alerts, caused by non-malicious access from automatic monitoring systems and by user mistakes. Conventional systems try to mitigate this problem by adding a level of interactivity to the honeypot, and by performing behavioral analysis of suspected malware if it has infected the honeypot itself.

An advanced attacker may use different attack techniques to enter a corporate network and to move laterally within the network in order to obtain its resource goals. The advanced attacker may begin with a workstation, server or any other network entity to start his lateral movement. He uses different methods to enter the first network node, including inter alia social engineering, existing exploit and/or vulnerability that he knows to exercise, and a Trojan horse or any other malware allowing him to control the first node.

Reference is made to FIG. 2, which is a simplified diagram of enterprise network **100** with attack vectors of an attacker at an early stage of lateral movement. Once an attacker has taken control of a first node in a corporate network, he uses different advance attack techniques for orientation and propagation and discovery of additional ways to reach other network nodes in the corporate network. Attacker movement from node to node is performed via an “attack vector”, which is an object in memory or storage of a first computer that may be used to access a second computer.

Exemplary attack vectors include inter alia credentials of users with enhanced privileges, existing share names on different servers, and details of an FTP server, an email server, an SQL server or an SSH server and its credentials. Attack vectors are often available to an attacker because a user did not logoff his workstation or clear his cache. E.g., if a user contacted a help desk and gave the help desk remote access to his workstation and did not logoff his workstation, then the help desk access credentials may still be stored in the user’s local cache and available to the attacker. Similarly, if the user accessed an FTP server, then the FTP account login parameters may be stored in the user’s local cache or profile and available to the attacker.

Attack vectors enable inter alia a move from workstation A→server B based on a shared name and its credentials, connection to a different workstation using local admin credentials that reside on a current workstation, and connection to an FTP server using specific access credentials.

Reference is made to FIG. 3, which is a simplified diagram of enterprise network **100** with attack paths of an attacker at a later stage of lateral movement. Whereas IT “sees” the logical and physical network topology, an attacker that lands on the first network node “sees” attack vectors that depart from that node and move laterally to other nodes. The attacker can move to such nodes and then follow “attack paths” by successively discovering attack vectors from node to node.

When the attacker implements such a discovery process on all nodes in the network, he will be able to “see” all attack vectors of the corporate network and generate a “maximal attack map”. Before the attacker discovers all attack vectors on network nodes and completes the discovery process, he generates a “current attack map” that is currently available to him.

An objective of the attacker is to discover an attack path that leads him to a target network node. The target may be a bank authorized server that is used by the corporation for ordering bank account transfers of money, it may be an FTP server that updates the image of all corporate points of sale, it may be a server or workstation that stores confidential information such as source code and secret formulas of the corporation, or it may be any other network node that is of value to the attacker and is his “attack goal node”.

When the attacker lands on the first node, but does not know how to reach the attack goal node, he generates a current attack map that leads to the attack goal node.

SUMMARY

There is thus provided in accordance with an embodiment of the present invention a system for network surveillance to detect attackers, including a deception management server within a network of resources, including a deployment module managing and planting one or more decoy attack vectors in one or more of the resources in the network, wherein an attack vector is an object in memory or storage of a first resource that may be used to access a second resource, and one or more decoy servers accessible from resources in the network via one or more of the decoy attack vectors planted in the resources by the deployment module, each decoy server including a forensic alert module causing a real-time forensic application to be transmitted to a destination resource in the network when the decoy server is being accessed by a specific resource in the network via one or more of the decoy attack vectors planted in the specific resource by the deployment module, wherein the forensic application, when launched in the destination resource, identifies a process running within the specific resource that is accessing that decoy server, logs the activities performed by the thus-identified process in a forensic report, and transmits the forensic report to the deception management server.

There is additionally provided in accordance with an embodiment of the present invention a method of network surveillance to detect attackers, including planting one or more decoy attack vectors in one or more resources in a network of computers, wherein an attack vector is an object in memory or storage of a first resource that may be used to access a second resource, recognizing that a decoy server in the network is being accessed by a specific resource in the network via one or more of the decoy attack vectors planted in the specific resource by the planting, and causing a real-time forensic application to be transmitted to a destination resource, wherein the forensic application, when launched on the destination resource, is operative to identify a process running within the specific resource that is accessing the decoy server, log the activities performed by the thus-identified process in a forensic report, and transmit the forensic report to a deception management server.

There is further provided in accordance with an embodiment of the present invention a system for network surveillance to detect attackers, the system including a deception management server within a network of resources that is governed by an access governor that authorizes users to access the resources in the network based on user credentials, the deception management server including a deployment module, planting one or more decoy user credentials in one or more of the resources in the network, and a forensic alert module for causing a real-time forensic application to be transmitted to a destination resource in the network, in response to the access governor recognizing an attempt by a first resource to access a second resource in the network via one or more of the decoy credentials planted in the first resource by the deployment module, wherein the forensic application, when launched in the destination resource, identifies a process running within the first resource that is attempting to access the second resource, logs the activities performed by the thus-identified process in a forensic report, and transmits the forensic report to the deception management server.

There is yet further provided in accordance with an embodiment of the present invention a method of network surveillance to detect attackers, including planting one or more decoy user credentials in one or more resources in a

network of resources that is governed by an access governor that authorizes users to access the resources in the network based on user credentials, recognizing an attempt by a first resource in the network to access a second resource in the network via one or more of the decoy user credentials planted in the first resource by the planting, and in response to the recognizing, causing a real-time forensic application to be transmitted to a destination resource, wherein the forensic application, when launched, is operative to identify a process running within the first resource that is accessing the decoy server, log the activities performed by the thus-identified process, and transmit the log to a deception management server.

There is moreover provided in accordance with an embodiment of the present invention a system for network surveillance to detect attackers, including a deception management server located within a network of resources, the network being governed by an access governor that authorizes users to access the resources in the network based on credentials that include a hash version of a cleartext password, the deception management server including a deployment module, planting one or more decoy credentials in one or more of the resources in the network, and a forensic alert module causing a real-time forensic application to be transmitted to a destination resource in the network, in response to recognizing that a first resource in the network attempts to access a second resource in the network using a decoy credential with its cleartext password, wherein the forensic application, when launched in the destination computer, identifies a process running within the first resource that is attempting to access the second resource, logs the activities performed by the thus-identified process in a forensic report, and transmits the forensic report to the deception management server.

There is additionally provided in accordance with an embodiment of the present invention a method of network surveillance to detect attackers, including planting a decoy credential in a first resource, wherein a credential enables a user to access a resource via a password, and wherein the decoy credential includes a hash of a cleartext password for accessing a second resource, recognizing that the first resource attempts to access the second resource using the cleartext password of the decoy credential, and causing, in response to the recognizing, a real-time forensic application to be transmitted to a destination computer, wherein the forensic application, when launched, is operative to identify a process running within the first resource that is attempting to access the second resource, log the activities performed by the thus-identified process, and transmit the log to a deception management server.

BRIEF DESCRIPTION OF THE DRAWINGS

The present invention will be more fully understood and appreciated from the following detailed description, taken in conjunction with the drawings in which:

FIG. 1 is a simplified diagram of a prior art enterprise network connected to an external internet;

FIG. 2 is a simplified diagram of a prior art enterprise network with attack vectors of an attacker at an early stage of lateral movement;

FIG. 3 is a simplified diagram of a prior art enterprise network with attack paths of an attacker at a later stage of lateral movement;

FIG. 4 is a simplified diagram of an enterprise network with network surveillance, in accordance with an embodiment of the present invention;

FIG. 5 is a simplified flowchart of a method for network surveillance and notification using decoy servers, in accordance with an embodiment of the present invention;

FIG. 6 is a simplified method for network surveillance and notification using decoy user credentials, in accordance with an embodiment of the present invention; and

FIG. 7 is a simplified diagram of a method for network surveillance using two-factor deception, in accordance with an embodiment of the present invention.

For reference to the figures, the following index of elements and their numerals is provided. Similarly numbered elements represent elements of the same type, but they need not be identical elements.

Table of elements in the figures	
Element	Description
10	Internet
100	enterprise network
110	network computers
120	network databases
130	network switches and routers
140	mobile devices
150	access governor (optional)
160	SIEM server
170	DNS server
180	firewall
200	enterprise network with network surveillance
210	deception management server
211	policy manager
212	deployment module
213	forensic application
220	database of credential types
230	policy database
240	decoy servers
241	tar-pit modules
242	forensic alert module
250	update server

Elements numbered in the 1000's are operations of flow charts.

DETAILED DESCRIPTION

In accordance with embodiments of the present invention, systems and methods are provided for creating, deploying and managing augmentation to an attacker's current attack map. These systems and methods define decoy attack vectors that change the current attack map, and detect the attacker when he follows an attack vector that leads to a decoy network node.

Reference is made to FIG. 4, which is a simplified diagram of an enterprise network 200 with network surveillance, in accordance with an embodiment of the present invention. Network 200 includes a deception management server 210, a database 220 of decoy attack vectors, a policy database 230 and decoy servers 240. In addition, network computers 110 and databases 120 are grouped into groups G1, G2, G3 and G4.

Database 220 stores attack vectors that fake movement and access to computers 110, databases 120 and other resources in network 200. Attack vectors include inter alia: user credentials of the form <username> <password> user credentials of the form <username> <hash of password> user credentials of the form <username> <ticket> FTP server credentials of the form <address> <username> <password>

SSH server credentials of the form <address> <username> <password>

The attack vectors stored in database 220 are categorized by families, such as inter alia

- 5 F1—user credentials
- F2—connections
- F3—FTP logins
- F4—SSH logins
- F5—share names
- 10 F6—databases
- F7—network devices
- F8—URLs
- F9—Remote Desktop Protocol (RDP)
- F10—recent command
- 15 F11—scanners

Credentials for a computer B that reside on a computer A provide an attack vector for an attacker from computer A→computer B.

Database 220 communicates with an update server 250, which updates database 220 as attack vectors for accessing, manipulating and hopping to computers evolve over time.

Policy database 230 stores, for each group of computers, G1, G2, . . . , policies for planting decoy attack vectors in computers of that group. Each policy specifies decoy attack vectors that are planted in each group, in accordance with attack vectors stored in database 220. For user credentials, the decoy attack vectors planted on a computer lead to another resource in the network. For attack vectors to access an FTP or other server, the decoy attack vectors planted on a computer lead to a decoy server 240.

It will be appreciated by those skilled in the art the databases 220 and 230 may be combined into a single database, or distributed over multiple databases.

Deception management server 210 includes a policy manager 211, a deployment module 212, and a forensic application 213. Policy manager 211 defines a decoy and response policy. The response policy defines different decoy types, different decoy combinations, response procedures, notification services, and assignments of policies to specific network nodes, network users, groups of nodes or users or both. Once policies are defined, they are stored in policy database 230 with the defined assignments.

Deception management server 210 obtains the policies and their assignments from policy database 230, and delivers them to appropriate nodes and groups. It then launches deployment module 212 to plant decoys in end points, servers, applications, routers, switches, relays and other entities in the network. Deployment module 212 plants each decoy, based on its type, in memory (RAM), disk, or in any other data or information storage area, as appropriate. Deployment module 212 plants the decoy attack vectors in such a way that the chances of a valid user accessing the decoy attack vectors are low. Deployment module 212 may or may not stay resident.

Forensic application 213 is a real-time application that is transmitted to a destination computer in the network, when a decoy attack vector is accessed by a computer 110. When forensic application 213 is launched on the destination computer, it identifies a process running within that computer 110 that accessed that decoy attack vector, logs the activities performed by the thus-identified process in a forensic report, and transmits the forensic report to deception management server 210.

Once an attacker is detected, a "response procedure" is launched. The response procedure includes inter alia various notifications to various addresses, and actions on a decoy server such as launching an investigation process, and

isolating, shutting down and re-imaging one or more network nodes. The response procedure collects information available on one or more nodes that may help in identifying the attacker's attack acts, attention and progress.

Each decoy server **240** includes a tar-pit module **241**, which is a process that purposely delays incoming connections, thereby providing additional time for forensic application **213** to launch and log activities on a computer **110** that is accessing the decoy server. Each decoy server **240** also includes a forensic alert module **242**, which alerts management system **210** that an attacker is accessing the decoy server via a computer **110** of the network, and causes deception management server **210** to send forensic application **213** to the computer that is accessing the decoy server. In an alternative embodiment of the present invention, decoy server **240** may store forensic application **213**, in which case decoy server **240** may transmit forensic application **213** directly to the computer that is accessing the decoy server. In another alternative embodiment of the present invention, deception management server **210** or decoy server **240** may transmit forensic application **213** to a destination computer other than the computer that is accessing the decoy server.

Notification servers (not shown) are notified when an attacker uses a decoy. The notification servers may discover this by themselves, or by using information stored on access governor **150** and SIEM **160**. The notification servers forward notifications, or results of processing multiple notifications, to create notification time lines or such other analytics.

Reference is made to FIG. 5, which is a simplified flowchart of a method **1100** for network surveillance and notification using decoy servers, in accordance with an embodiment of the present invention. The flowchart of FIG. 5 is divided into three columns. The leftmost column includes operations performed by deception management server **210**. The middle column includes operations performed by a decoy server B that is accessed from a computer A using decoy attack vectors. The rightmost column includes operations performed by computer A.

At operation **1105**, deployment module **212** plants decoy attack vectors in computers **110** in accordance with the policies in database **230**. At operation **1110** decoy server B recognizes that it is being accessed from a computer A via a decoy attack vector. At operation **1115**, tar-pit module **241** of decoy server B delays access to data and resources on decoy server B. The delaying performed at operation **1115** provides additional time for decoy server B to send a request to deception management server **210** to transmit forensic application **213** to computer A, and for computer A to receive and run forensic application **213**. At operation **1120**, decoy server B sends a request to deception management server **210**, to transmit real-time forensic application **213** to computer A.

At operation **1125**, deception management server **210** receives the request send by decoy server B, and at operation **1130** deception management server **210** transmits forensic application **213** to computer A.

At operation **1135**, computer A receives forensic application **213** from deception management server **210**, and launches the application. At operation **1140**, forensic application **213** identifies a process, P, running on computer A that is accessing decoy server B. At operation **1145**, forensic application **213** logs activities performed by process P. At operation **1150**, forensic application **213** transmits a forensic report to deception management server **210**. Finally, at operation **1155**, deception management server **210** receives the forensic report from computer A.

In accordance with an alternative embodiment of the present invention, decoy server B may store forensic application **213**, in which case decoy server B may transmit forensic application **213** directly to computer A, and operations **1120**, **1125** and **1130** can be eliminated.

In accordance with another alternative embodiment of the present invention, forensic application **213** is transmitted by deception management server **210** or by decoy server B to a destination computer other than computer A. When the destination computer launches forensic application **213**, the application communicates with computer A to identify the process, P, running on computer A that is accessing decoy server B, log the activities performed by process P, and transmit the forensic report to deception management server **210**.

Reference is made to FIG. 6, which is a simplified method for network surveillance and notification using decoy user credentials, in accordance with an embodiment of the present invention. The flowchart of FIG. 6 is divided into three columns. The leftmost column includes operations performed by deception management server **210**. The middle column includes operations performed by access governor **150**. The rightmost column includes operations performed by a computer A that attempts to login to a computer B using decoy user credentials.

At operation **1205**, deployment module **212** plants decoy credentials in computers **110** in accordance with the policies in database **230**. At operation **1210** access governor **150** receives an authorization request from a computer B for a login to a computer A using invalid user credentials. At operation **1215** access governor **150** reports the attempted invalid login to SIEM server **160**.

At operation **1225**, deception management server **210** identifies an invalid login attempt event reported by SIEM server **160**, and at operation **1230** deception management server **210** transmits real-time forensic application **213** to computer A.

At operation **1235**, computer A receives forensic application **213** from deception management server **210**, and launches the application. At operation **1240**, forensic application **213** identifies a process, P, running on computer A that is accessing computer B. At operation **1245**, forensic application **213** logs activities performed by process P. At operation **1250**, forensic application **213** transmits a forensic report to deception management server **210**. Finally, at operation **1255**, deception management server **210** receives the forensic report from computer A.

In accordance with an alternative embodiment of the present invention, forensic application **213** is transmitted by deception management server **210** to a destination computer other than computer A. When the destination computer launches forensic application **213**, the application communicates with computer A to identify the process, P, running on computer A that is accessing computer B, log the activities performed by process P, and transmit the forensic report to deception management server **210**.

As mentioned above, conventional honeypot systems generate many false alerts. Embodiments of the present invention enhance confidence levels in identifying an attacker, by luring him into multiple access attempts to different resources monitored by the system.

Reference is made to FIG. 7, which is a simplified diagram of a method for network surveillance using two-factor deception, in accordance with an embodiment of the present invention. At operation **1310** an attacker accesses a computer A of network **200**. At operation **1320** the attacker obtains decoy credentials for accessing a computer B of

11

network 200, the decoy credentials being of the form <username> <hash>, where <hash> is a hash value of a cleartext password. The decoy credentials are preferably planted in computer A such that the chances of a valid user or automated monitor accessing the credentials are low.

At operation 1330 the attacker derives the cleartext password from <hash>. Operation 1330 may be performed by rainbow tables, which are pre-computed tables for reversing cryptographic hash functions. At operation 1340 the attacker attempts a login to computer B using the cleartext version of the decoy credentials <username> <cleartext password>. At this stage, the chances of such login being performed by a valid user or automated monitor are extremely low, since this login requires two suspicious factors; namely, (i) extracting the decoy credentials with the hash value of the cleartext password from computer A, and (ii) reversing the extracted hash value to obtain the cleartext password.

It will be appreciated by those skilled in the art that the two-factor method shown in FIG. 7 can be extended to more than two factors by successively planting a trail of decoy credentials that lead from one computer to the next.

In the foregoing specification, the invention has been described with reference to specific exemplary embodiments thereof. It will, however, be evident that various modifications and changes may be made to the specific exemplary embodiments without departing from the broader spirit and scope of the invention. Accordingly, the specification and drawings are to be regarded in an illustrative rather than a restrictive sense.

What is claimed is:

1. A system for augmenting an attacker map of a network of resources, comprising:

a deception management server within a network of resources, generating an attacker map for the network, the attacker map depicting a view of the network and comprising one or more lateral attack paths traversing some or all of the resources, each lateral attack path corresponding to one or more successive lateral attack vectors, wherein a lateral attack vector is an object in memory or storage of a first resource of the network that may potentially lead an attacker to a second resource of the network;

a deployment module planting one or more decoy lateral attack vectors in some of all of the resources of the network; and

an access governor authorizing access to resources in the network, and issuing a notification upon recognizing an attempt to access one or more of the resources of the network via one or more of the decoy lateral attack vectors planted by said deception module,

wherein said deception management server further generates an augmented attacker map by augmenting the lateral attack paths based on the decoy lateral attack vectors added by said deployment module.

12

2. The system of claim 1 wherein said deployment module adds one or more decoy resources to the network, and wherein one or more of the decoy lateral attack vectors are planted in decoy resources or lead to decoy resources.

3. The system of claim 2, wherein the lateral attack vectors and the decoy lateral attack vectors include at least one member of (i) username and password, (ii) username and authentication ticket, (iii) FTP server address, username and password, (iv) database server address, username and password, and (v) SSH server address, username and password.

4. The system of claim 2, wherein said deception management server renders views of the attacker map and the augmented attacker map.

5. A non-transitory computer readable medium storing instructions, which, when executed by a processor of a management computer, cause the computer:

to generate an attacker map for a network of resources, the attacker map depicting a view of the network and comprising one or more lateral attack paths traversing some or all of the resources, each lateral attack path corresponding to one or more successive lateral attack vectors, wherein a lateral attack vector is an object in memory or storage of a first resource of the network that may potentially lead an attacker to a second resource of the network;

to plant one or more decoy lateral attack vectors in some or all of the resources of the network; and

to generate an augmented attacker map by augmenting the lateral attack paths based on the decoy lateral attack vectors; and

to issue a notification upon recognizing an attempt to access one or more of the resources of the network via one or more of the decoy attack vectors that were planted.

6. The computer readable medium of claim 5 wherein the instructions further cause the computer to add one or more decoy resources to the network, wherein one or more of the decoy lateral attack vectors are planted in decoy resources or lead to decoy resources.

7. The computer readable medium of claim 6, wherein the lateral attack vectors and the decoy lateral attack vectors include at least one member of (i) username and password, (ii) username and authentication ticket, (iii) FTP server address, username and password, (iv) database server address, username and password, and (v) SSH server address, username and password.

8. The computer readable medium of claim 6, wherein the instructions further cause the computer to render views of the attacker map and the augmented attacker map.

* * * * *