



US008471830B2

(12) **United States Patent**  
**Goertz**

(10) **Patent No.:** **US 8,471,830 B2**  
(45) **Date of Patent:** **Jun. 25, 2013**

(54) **SCANNING OF A TOUCH SCREEN**

|               |         |                               |
|---------------|---------|-------------------------------|
| 4,847,606 A   | 7/1989  | Beiswenger                    |
| 4,880,969 A   | 11/1989 | Lawrie                        |
| 4,928,094 A   | 5/1990  | Smith                         |
| 5,036,187 A * | 7/1991  | Yoshida et al. .... 250/214 B |
| 5,162,783 A   | 11/1992 | Moreno                        |
| 5,179,369 A   | 1/1993  | Person et al.                 |
| 5,194,863 A   | 3/1993  | Barker et al.                 |
| 5,414,413 A   | 5/1995  | Tamaru et al.                 |
| 5,559,727 A   | 9/1996  | Deley et al.                  |

(75) Inventor: **Magnus Goertz**, Lidingo (SE)

(73) Assignee: **Neonode Inc.**, Santa Clara, CA (US)

(\* ) Notice: Subject to any disclaimer, the term of this patent is extended or adjusted under 35 U.S.C. 154(b) by 734 days.

(Continued)

(21) Appl. No.: **12/667,692**

**FOREIGN PATENT DOCUMENTS**

(22) PCT Filed: **Jul. 6, 2007**

|    |            |         |
|----|------------|---------|
| EP | 0330767 A1 | 10/1993 |
| EP | 0601651 A1 | 6/1994  |

(86) PCT No.: **PCT/SE2007/050508**

(Continued)

§ 371 (c)(1),  
(2), (4) Date: **Jan. 5, 2010**

**OTHER PUBLICATIONS**

(87) PCT Pub. No.: **WO2009/008786**

Hodges, S., Izadi, S., Butler, A., Rustemi, A., and Buxton, B., ThinSight: Versatile Multi-Touch Sensing for Thin Form-Factor Displays, UIST'07, Oct. 7-10, 2007.

PCT Pub. Date: **Jan. 15, 2009**

*Primary Examiner* — Dismery Mercedes

(65) **Prior Publication Data**

(74) *Attorney, Agent, or Firm* — Soquel Group LLC

US 2011/0043485 A1 Feb. 24, 2011

(57) **ABSTRACT**

(51) **Int. Cl.**  
**G06F 3/042** (2006.01)

A user interface for receiving input commands in a mobile terminal includes a display device for presenting visual information. Arrays of light sources and arrays of light detectors are arranged along respective first and second sides of the display device. Each array of light sources is configured to transmit light pulses over the display device, and each array of light detectors is configured to receive a part of the energy in the transmitted light pulses. A processing unit controls the light sources such that a light pulse is repeatedly transmitted from each source according to a predefined sequence. Based on an ambience light intensity and a measurement value registered by at least one light detector during transmission of light from the light source, the processing unit determines whether or not a light-obstructive object is present on the display device between a given light source and at least one light detector.

(52) **U.S. Cl.**  
USPC ..... **345/175; 345/173; 345/174**

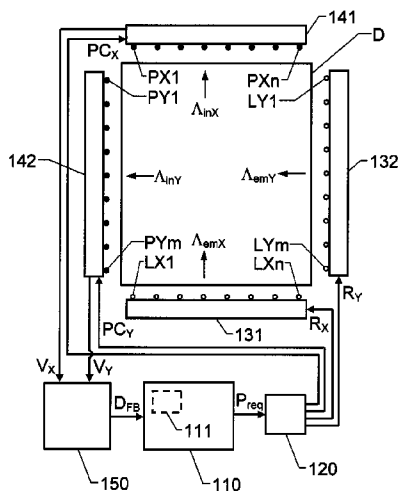
(58) **Field of Classification Search**  
None  
See application file for complete search history.

(56) **References Cited**

**U.S. PATENT DOCUMENTS**

|               |         |                        |
|---------------|---------|------------------------|
| 4,243,879 A   | 1/1981  | Carroll et al.         |
| 4,301,447 A   | 11/1981 | Funk et al.            |
| 4,518,249 A   | 5/1985  | Murata et al.          |
| 4,550,250 A   | 10/1985 | Mueller et al.         |
| 4,703,316 A * | 10/1987 | Sherbeck ..... 345/175 |
| 4,710,760 A   | 12/1987 | Kasday                 |
| 4,782,328 A   | 11/1988 | Denlinger              |

**22 Claims, 3 Drawing Sheets**



| U.S. PATENT DOCUMENTS |     |         | FOREIGN PATENT DOCUMENTS |              |            |         |                  |         |
|-----------------------|-----|---------|--------------------------|--------------|------------|---------|------------------|---------|
| 5,577,733             | A   | 11/1996 | Downing                  | 2004/0263482 | A1*        | 12/2004 | Goertz           | 345/173 |
| 5,579,035             | A   | 11/1996 | Beiswenger               | 2005/0104860 | A1         | 5/2005  | McCreary et al.  |         |
| 5,603,053             | A   | 2/1997  | Gough et al.             | 2005/0122308 | A1         | 6/2005  | Bell et al.      |         |
| 5,729,250             | A   | 3/1998  | Bishop et al.            | 2005/0174473 | A1         | 8/2005  | Morgan et al.    |         |
| 5,785,439             | A   | 7/1998  | Bowen                    | 2005/0271319 | A1         | 12/2005 | Graham           |         |
| 5,825,352             | A   | 10/1998 | Bisset et al.            | 2006/0001654 | A1         | 1/2006  | Smits            |         |
| 5,889,236             | A   | 3/1999  | Gillespie et al.         | 2006/0161870 | A1         | 7/2006  | Hotelling et al. |         |
| 5,914,709             | A   | 6/1999  | Graham et al.            | 2006/0161871 | A1         | 7/2006  | Hotelling et al. |         |
| 5,936,615             | A   | 8/1999  | Waters                   | 2006/0229509 | A1         | 10/2006 | Al-Ali et al.    |         |
| 5,988,645             | A*  | 11/1999 | Downing                  | 2007/0024598 | A1         | 2/2007  | Miller et al.    |         |
| 6,010,061             | A   | 1/2000  | Howell                   | 2007/0084989 | A1         | 4/2007  | Lange et al.     |         |
| 6,323,846             | B1  | 11/2001 | Westerman et al.         | 2007/0146318 | A1         | 6/2007  | Juh et al.       |         |
| 6,421,042             | B1  | 7/2002  | Omura et al.             | 2007/0152984 | A1         | 7/2007  | Ording et al.    |         |
| 6,429,857             | B1* | 8/2002  | Masters et al.           | 2008/0008472 | A1         | 1/2008  | Dress et al.     |         |
| 6,570,557             | B1  | 5/2003  | Westerman et al.         | 2008/0012850 | A1         | 1/2008  | Keating, III     |         |
| 6,677,932             | B1  | 1/2004  | Westerman                | 2008/0013913 | A1         | 1/2008  | Lieberman et al. |         |
| 6,803,906             | B1  | 10/2004 | Morrison et al.          | 2008/0055273 | A1         | 3/2008  | Forstall         |         |
| 6,857,746             | B2  | 2/2005  | Dyner                    | 2008/0068353 | A1         | 3/2008  | Lieberman et al. |         |
| 6,864,882             | B2* | 3/2005  | Newton                   | 2008/0093542 | A1         | 4/2008  | Lieberman et al. |         |
| 6,888,536             | B2  | 5/2005  | Westerman et al.         | 2008/0100593 | A1         | 5/2008  | Skillman et al.  |         |
| 6,947,032             | B2  | 9/2005  | Morrison et al.          | 2008/0111797 | A1         | 5/2008  | Lee              |         |
| 6,954,197             | B2  | 10/2005 | Morrison et al.          | 2008/0117183 | A1         | 5/2008  | Yu et al.        |         |
| 6,972,401             | B2  | 12/2005 | Akitt et al.             | 2008/0121442 | A1         | 5/2008  | Boer et al.      |         |
| 7,030,861             | B1  | 4/2006  | Westerman et al.         | 2008/0122792 | A1         | 5/2008  | Izadi et al.     |         |
| 7,133,032             | B2  | 11/2006 | Cok                      | 2008/0122796 | A1         | 5/2008  | Jobs et al.      |         |
| 7,176,905             | B2  | 2/2007  | Baharav et al.           | 2008/0122803 | A1         | 5/2008  | Izadi et al.     |         |
| 7,184,030             | B2  | 2/2007  | McCharles et al.         | 2008/0158174 | A1         | 7/2008  | Land et al.      |         |
| 7,232,986             | B2  | 6/2007  | Worthington et al.       | 2008/0192025 | A1         | 8/2008  | Jaeger et al.    |         |
| RE40,153              | E   | 3/2008  | Westerman et al.         | 2008/0259053 | A1         | 10/2008 | Newton           |         |
| 7,339,580             | B2  | 3/2008  | Westerman et al.         | 2008/0297487 | A1         | 12/2008 | Hotelling et al. |         |
| 7,355,594             | B2  | 4/2008  | Barkan                   | 2009/0027357 | A1         | 1/2009  | Morrison         |         |
| 7,372,456             | B2  | 5/2008  | McLintock                | 2009/0058833 | A1         | 3/2009  | Newton           |         |
| 7,464,110             | B2  | 12/2008 | Pyhälammii et al.        | 2009/0066673 | A1         | 3/2009  | Molne et al.     |         |
| 7,479,949             | B2  | 1/2009  | Jobs et al.              | 2009/0096994 | A1         | 4/2009  | Smits            |         |
| 7,775,612             | B2* | 8/2010  | Ruan et al.              | 2009/0244018 | A1*        | 10/2009 | Lin et al.       | 345/173 |
| 7,855,716             | B2  | 12/2010 | McCreary et al.          |              |            |         |                  |         |
| 8,022,941             | B2  | 9/2011  | Smoot                    |              |            |         |                  |         |
| 8,068,101             | B2* | 11/2011 | Goertz                   |              |            |         |                  |         |
| 8,120,625             | B2  | 2/2012  | Hinckley                 |              |            |         |                  |         |
| 2002/0109843          | A1  | 8/2002  | Ehsani et al.            | WO           | 8600446    | A1      | 1/1986           |         |
| 2002/0175900          | A1  | 11/2002 | Armstrong                | WO           | 8600447    | A1      | 1/1986           |         |
| 2003/0002809          | A1  | 1/2003  | Jian                     | WO           | 0102949    | A1      | 1/2001           |         |
| 2003/0234346          | A1* | 12/2003 | Kao                      | WO           | 02095668   | A1      | 11/2002          |         |
| 2004/0046960          | A1  | 3/2004  | Wagner et al.            | WO           | 03038592   | A1      | 5/2003           |         |
| 2004/0056199          | A1* | 3/2004  | O'Connor et al.          | WO           | 2009008786 | A1      | 1/2009           |         |

\* cited by examiner

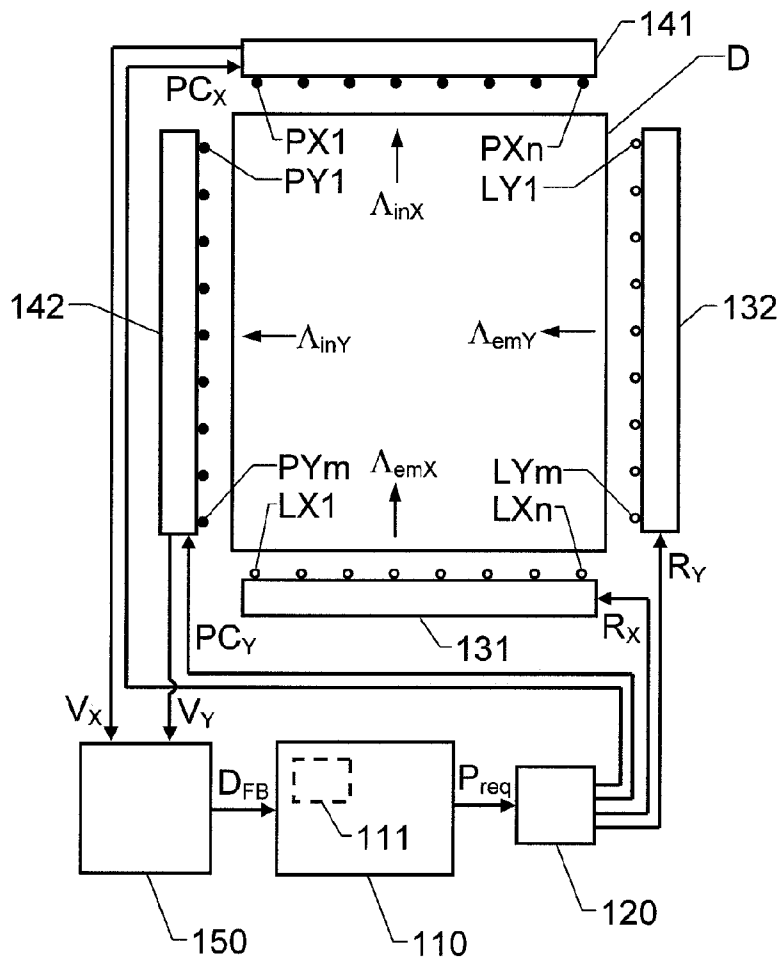


Fig. 1

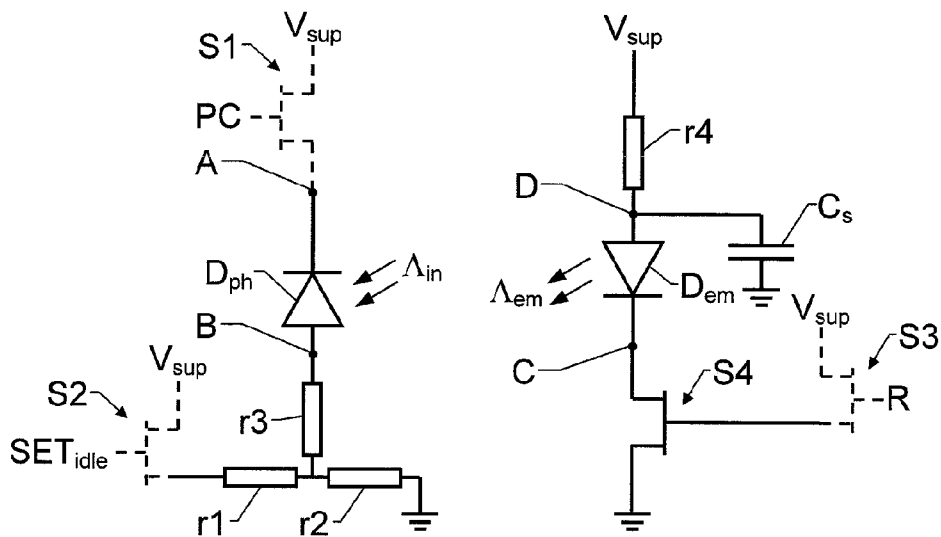


Fig. 2

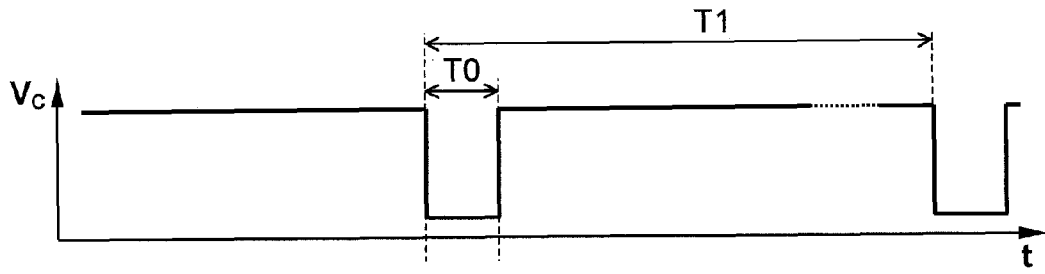


Fig. 3a

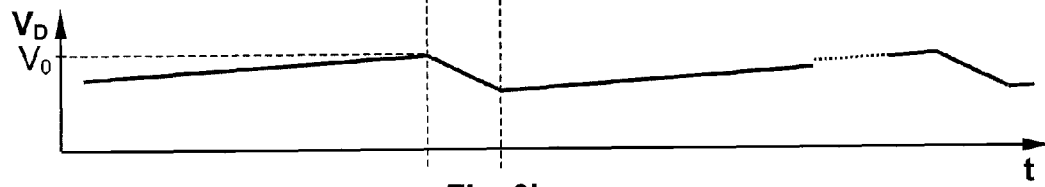


Fig. 3b

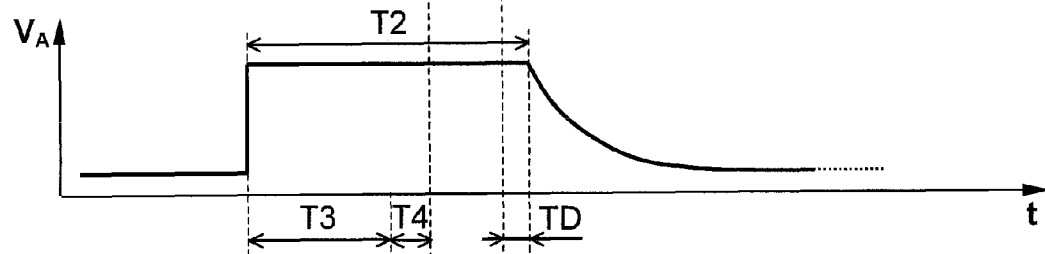


Fig. 3c

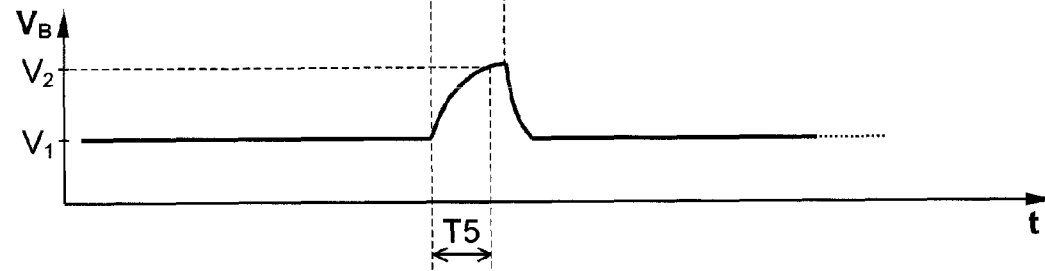


Fig. 3d

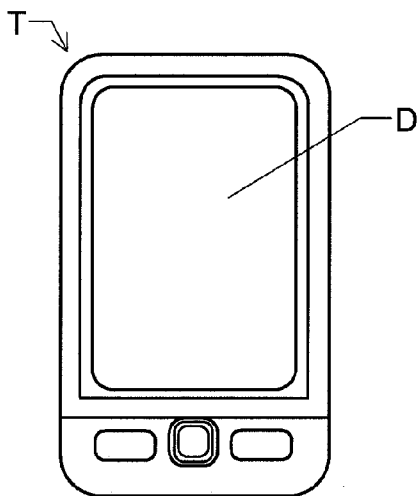


Fig. 4

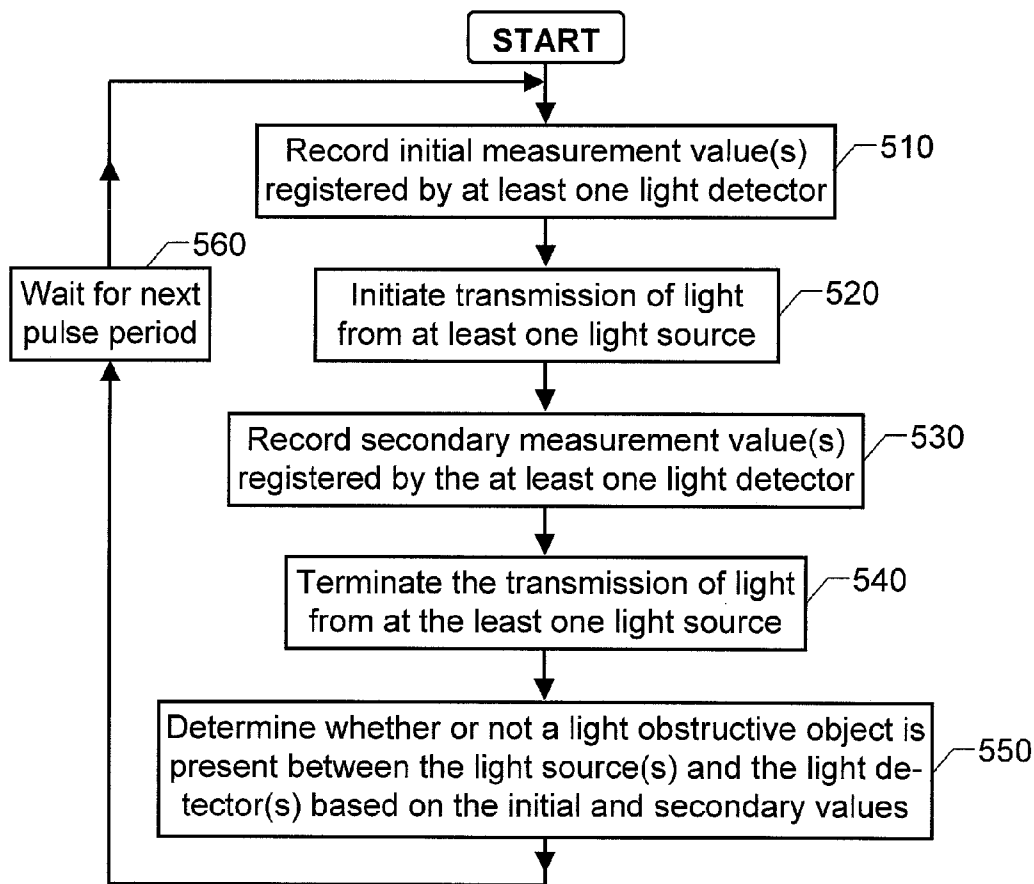


Fig. 5

## SCANNING OF A TOUCH SCREEN

THE BACKGROUND OF THE INVENTION AND  
PRIOR ART

The present invention relates generally to solutions for scanning a touch screen in search of objects positioned on the screen to indicate input commands. More particularly the invention relates to an interface arrangement according to the preamble of claim 1, a mobile terminal according to the preamble of claim 9 and a method of generating input commands according to the preamble of claim 10. The invention also relates to a computer program product according to claim 17 and a computer readable medium according to claim 18.

The current trend in mobile and portable devices is that the devices are made physically smaller and smaller. At the same time, the devices are provided with more functionality and processing capacity. Therefore, flexible user interfaces are required to enable efficient input of commands and data, while allowing presentation of complex information. To this aim, touch screens and other types of multi-purpose interface means are highly useful.

US 2004/0263482 discloses a touch screen arrangement for a mobile telephone. Here, in addition to a display unit, the touch screen includes a number of light pulse emitting elements and a number of light receiving elements, which are arranged along the edges of the display unit. The emitting elements generate light pulses according to a predetermined sequence, and based on light energy registered by the receiving elements, it is determined whether or not a light-obstructive object (e.g. a fingertip) is present on the display unit. Hence, user-generated commands can be fed into the telephone.

However, depending on the conditions in which the telephone is operated the energy level received by the light receiving elements may vary substantially. For instance, when operated in direct sunlight, the received energy level is typically many factors of ten higher than the energy level received when the unit is operated in a dark or shaded environment.

## SUMMARY OF THE INVENTION

The object of the invention is therefore to alleviate the above problems, and present a reliable and efficient solution for scanning a touch screen optically.

According to the invention, the object is achieved by the interface arrangement as initially described, wherein the processing unit is adapted to record an initial measurement value registered by at least one detector in the at least one array of light detectors prior to transmitting the light pulse. Thus, the initial measurement value represents an ambience light intensity. The processing unit is specifically adapted to determine whether or not a light-obstructive object is present on the display device based on the initial measurement value and a secondary measurement value registered by at least one light detector during emission of light from the light source.

The proposed arrangement is advantageous because the light detection is made relative to the ambience light intensity. Therefore, the effects of any variations in the surrounding light conditions can be cancelled out.

According to one preferred embodiment of the invention, the display device has a rectangular outline with four separate sides, and the at least one second side represents a respective side opposite to the at least one first side. Hence, each light detector may expediently register light pulses from one or more light sources.

According to another preferred embodiment of the invention, the interface arrangement includes a selection means adapted to control the at least one array of light sources to emit light from a given light source during a specified interval. Thereby, the predefined sequence of light pulses can be effected in a straightforward manner.

According to yet another preferred embodiment of the invention, the processing unit is adapted to cause pre-charging of at least one detector in the at least one array of light detectors in coordination with the light emitted from the given light source, such that the pre-charging is initiated at least a threshold time prior to a start of a specified interval. Namely, this enables registration of the initial measurement value representing the ambience light intensity.

According to still another preferred embodiment of the invention, the interface arrangement includes a digitizing unit, which is configured to receive measurement values from the at least one array of light detectors and in response thereto deliver digital data to the processing unit. Preferably, the processing unit is further configured to initiate the emission of light from a given light source no earlier than after that digital data representing the initial measurement value has been received by the processing unit. Consequently, it is ensured that the initial measurement value exclusively represents the ambience light.

According to another preferred embodiment of the invention, the processing unit is configured to control the at least one array of light sources such that each light pulse has a duration exceeding a conversion time of the digitizing unit for producing the digital data based on the received measurement values. Thereby, good data quality can be guaranteed, and thus also a reliable behavior of the proposed interface.

According to a further preferred embodiment of the invention, the processing unit is configured to cause pre-charging of at least one detector in the at least one array of light detectors in coordination with the light emitted from the given light source, such that the pre-charging is terminated no earlier than a delay time after expiry of the specified interval during which light is emitted from the given light source. The delay time here represents a conversion time of the digitizing unit for producing the digital data based on the received measurement values. The delay time is desirable because it enables detection of a maximum amount of energy in the emitted light pulse.

According to another aspect of the invention the object is achieved by the terminal described initially, wherein the terminal includes the interface arrangement of the above-proposed type.

According to yet another aspect of the invention, the object is achieved by the method described initially, wherein an initial measurement value is recorded, which has been registered by at least one detector in the array of light detectors prior to transmitting the light pulse. The initial measurement value thus represents an ambience light intensity. It is then determined whether or not a light-obstructive object is present on the display device based on the initial measurement value and a secondary measurement value registered by at least one light detector during emission of light from the source. The advantages of this method, as well as the preferred embodiments thereof, are apparent from the discussion hereinabove with reference to the proposed vehicle arrangement.

According to a further aspect of the invention the object is achieved by a computer program product directly loadable into the internal memory of a computer, comprising software for controlling the above proposed method when said program is run on a computer.

According to another aspect of the invention the object is achieved by a computer readable medium, having a program recorded thereon, where the program is to make a computer control the above proposed method.

Further advantages, advantageous features and applications of the present invention will be apparent from the following description and the dependent claims.

#### BRIEF DESCRIPTION OF THE DRAWINGS

The present invention is now to be explained more closely by means of preferred embodiments, which are disclosed as examples, and with reference to the attached drawings.

FIG. 1 shows a block diagram over an interface arrangement according to one embodiment of the invention;

FIG. 2 shows schematic circuit diagrams over a light source and a light detector respectively according to one embodiment of the invention;

FIGS. 3a-d show diagrams illustrating examples of the timing relationship between a set of key signals in the circuit diagrams of FIG. 2;

FIG. 4 illustrates a mobile terminal including the proposed interface arrangement; and

FIG. 5 shows a flow diagram illustrating the general method of generating input commands to a mobile terminal according to the invention.

#### DESCRIPTION OF PREFERRED EMBODIMENTS OF THE INVENTION

We refer initially to FIG. 1, which shows a block diagram over an interface arrangement for receiving input commands in a mobile terminal according to one embodiment of the invention.

The arrangement includes a display device D, at least one array of light sources **131** and **132** respectively, at least one array of light detectors **141** and **142** respectively and a processing unit **110**.

The display device D, e.g. including an LCD (Liquid Crystal Display) screen, is adapted to present visual information to a user. The arrays of light sources **131** and **132** are arranged along a respective side of the display device D. Preferably; the display device D has a rectangular outline with four separate sides. In such a case, a first array of light sources **131** may be arranged along a lowermost side of the display device D, and a second array of light sources **132** may be arranged along a rightmost side of the display device D as illustrated in FIG. 1. However, depending on the outline of the display device D and the design of software which controls the user interface, numerous alternative arrangements of the arrays of light sources **131** and **132** are likewise conceivable according to the invention. For example the light sources may exclusively be arranged along a single side of the display device D, and be configured to emit light rays at different angles across the display device D.

The arrays of light detectors **141** and **142** are arranged along a respective side of the display device D where no light sources are arranged. Thus, provided that the display device D has a rectangular outline with four separate sides as illustrated in FIG. 1, a first array of light detectors **141** may be arranged opposite to the first array of light sources **131**, and a second array of light detectors **142** may be arranged opposite to the second array of light sources **132**. However, technically, the arrays of light sources and detectors **131**, **132**, **141** and **142** can be arranged so that the arrays of light sources **131** and **132** are instead arranged along adjoining sides, and analogously,

the arrays of light detectors **141** and **142** likewise are arranged along adjoining sides of the display device D.

In any case, each array of light sources is configured to transmit light pulses, here exemplified by  $\Lambda_{emX}$  and  $\Lambda_{emY}$ , over the display device D. Moreover, each array of light detectors **141** and **142** is configured to receive a part  $\Lambda_{inX}$  and  $\Lambda_{inY}$  of the energy in the transmitted light pulses  $\Lambda_{emX}$  and  $\Lambda_{emY}$  respectively. Each light source, in turn, may either be configured to emit light in a relatively narrow lobe, such that its emitted light can be registered by one detector only; or in a comparatively wide lobe, such that its emitted light can be registered by two or more detectors.

The processing unit **110** is adapted to control the arrays of light sources **131** and **132**, such that a respective light pulse  $\Lambda_{emX}$  and  $\Lambda_{emY}$  is repeatedly transmitted from each source  $LX1, \dots, LXn$  and  $LY1, \dots, LYm$  respectively in the arrays **131** and **132** according to a predefined sequence. The processing unit **110** is also adapted to receive information pertaining to light energy registered by the detectors  $PX1, \dots, PXn$ ;  $PY1, \dots, PYm$  in the arrays of light detectors **141** and **142**. Based thereon, the processing unit **110** is adapted to determine whether or not a light-obstructive object (e.g. represented by a fingertip) is present on the display device D between a given light source and at least one light detector in the arrays of light detectors **141** and **142**. Naturally, the numbers n and m of light sources and light detectors in the arrays **131**, **132**, **141** and **142** depend on the desired accuracy/resolution at which a position of the light-obstructive element is to be determined. Moreover, as touched upon above, the number of light sources may be different from the number of light detectors. Nevertheless, for a typical implementation, the numbers n and m normally range from 4 to 20.

Specifically, according to the invention, the processing unit **110** is adapted to record an initial measurement value  $V_1$ , which is registered by at least one detector in the arrays of light detectors **141** and **142** prior to transmitting the light pulse  $\Lambda_{emX}$  and  $\Lambda_{emY}$ . Hence, the initial measurement value  $V_1$  represents an ambience light intensity. Then, based on the initial measurement value  $V_1$  and a secondary measurement value  $V_2$  that is registered by at least one light detector during emission of light from the light source, the processing unit **110** is adapted to determine whether or not a light-obstructive object is present on the display device D at such a position that this object intersects a path of the emitted light. Here, a light-obstructive object may be deemed to be present if the difference between the initial measurement value  $V_1$  and the secondary measurement value  $V_2$  exceeds a threshold value.

According to one preferred embodiment of the invention, the interface arrangement further includes a digitizing unit **150**, which is configured to receive measurement values  $V_x$  and  $V_y$  from the arrays of light detectors **141** and **142** respectively, and in response thereto deliver corresponding digital data  $D_{FB}$  to the processing unit **110**. Thereby, any light intensities registered by the light detectors may be processed in the unit **110** in a straightforward manner.

Preferably, the arrangement also includes a selection means **120** adapted to, on one hand, control the arrays of light sources **131** and **132** to emit light from a given light source during a specified interval; and on the other hand, control the arrays of light detectors **141** and **142** to register light energy in one or more detectors during corresponding specified intervals. The selection means **120** is either a separate unit (as illustrated in FIG. 1), or an integral module of the processing unit **110**. In any case, based on a request signal  $P_{req}$  originated in the processing unit **110**, the selection means **120** is configured to generate a specific control signal  $R_x, R_y, PC_x$  or  $PC_y$  to the arrays of light sources **131** or **132**, or the arrays of light

detectors **141** or **142** respectively. Here, each control signal in a first set of control signals  $R_x$  and  $R_y$  is adapted to cause light to be emitted from a particular light source in a given array of light sources **131** or **132**, whereas each control signal in a second set of control signals  $PC_x$  and  $PC_y$  is adapted to cause registration of light received by a particular light detector in a given array of light detectors **141** or **142**.

It is further preferable if the processing unit **110** includes, or is associated with, a computer readable medium **111**, e.g. a memory module, which stores a program, where the program is adapted to make the processing unit **110** control the proposed arrangement as described above.

FIG. 2 shows a schematic circuit diagram over a light source and a light detector respectively according to one embodiment of the invention. The right hand circuitry represents one of the light sources in one of said arrays, say **132**, whereas the left hand circuitry represents one of the light detectors in one of said arrays, say **142**.

In the embodiment illustrated in FIG. 2, a first switch **S1** is configured to pre-charge a photo diode  $D_{ph}$  in response to a first control signal  $PC$ , e.g. embodied by the above signal  $PC_y$  from the selection means **120**. Hence, the first control signal  $PC$  is adapted to cause the photo diode  $D_{ph}$  to register an ambient light intensity. A set of resistors  $r1$ ,  $r2$  and  $r3$  are arranged to accomplish appropriate bias voltages for a second switch **S2** and the photo diode  $D_{ph}$  respectively. The second switch **S2** is configured to set the photo diode  $D_{ph}$  in an active state or an idle state in response to a second control signal  $SET_{idle}$ , e.g. generated by the processing unit **110** and forwarded via the selection means **120**. Preferably, both the first and second switches **S1** and **S2** are connected to a supply voltage  $V_{sup}$ , say 3V.

A third switch **S3**, is configured to control a fourth switch **S4** in response to a third control signal  $R$ , e.g. embodied by the above signal  $R_y$  from the selection means **120**. The fourth switch **S4**, in turn, is configured to activate a light emitting diode  $D_{em}$ , such that light energy  $\Lambda_{em}$  is produced. A charge capacitor  $C_s$  and a charging resistor  $r4$  are connected to the light emitting diode  $D_{em}$  and arranged to supply the required energy to the light emitting diode  $D_{em}$ . The charging resistor  $r4$  is further connected to the supply voltage  $V_{sup}$ , say 3V.

FIG. 3a shows a diagram illustrating one example of a voltage  $V_C$  (in a point C downstream of the light emitting diode  $D_{em}$  in FIG. 2) as a function of time  $t$ , FIG. 3b shows a diagram illustrating one example of a voltage  $V_D$  (in a point D upstream of the light emitting diode  $D_{em}$  in FIG. 2) as a function of time  $t$ , FIG. 3c shows a diagram illustrating one example of a voltage  $V_A$  (in a point A upstream of the photo diode  $D_{ph}$  in FIG. 2) as a function of time  $t$ , and FIG. 3d shows a diagram illustrating one example of a voltage  $V_B$  (in a point R downstream of the photo diode  $D_{ph}$  in FIG. 2) as a function of time  $t$ .

In this example, we presume that the predefined sequence of light pulses implemented by the processing unit **110** prescribes that a light pulse is to be generated by the light source (i.e. the light emitting diode  $D_{em}$ ) during a specified interval  $T0$ , and that this light source shall produce a subsequent light pulse a time  $T1$  later. The third control signal  $R$  causes a voltage dip in  $V_C$  during the interval  $T0$ . As a result, the charge capacitor  $C_s$  releases its stored energy through the light emitting diode  $D_{em}$ , and the diode emits light over the display device towards the photo diode  $D_{ph}$ .

As can be seen in FIG. 3b, during the interval  $T0$ ,  $V_D$  drops from a maximum value  $V_o$  due to the drain of electric charges from the capacitor  $C_s$ . Thereafter, the capacitor  $C_s$  is recharged until the time  $T1$  has expired, and the procedure is repeated.

We now refer to FIGS. 3c and 3d. As mentioned above, an initial measurement value  $V_1$  representing the ambience light intensity is registered by the light detector (i.e. the photo diode  $D_{ph}$ ) prior to emitting the light pulse from the light emitting diode  $D_{em}$ ). Thus, to this aim, the processing unit **110** controls the photo diode  $D_{ph}$  in coordination with the light emitted from the light emitting diode  $D_{em}$ . Preferably, the processing unit **110** is configured to cause pre-charging of the photo diode  $D_{ph}$  by forwarding the first control signal  $PC$  to the first switch **S1**. The processing unit **110** initiates this pre-charging at least a threshold time  $T3$  prior to the start of the specified interval  $T0$ , and continues the pre-charging during an interval  $T2$ .

Moreover, it is preferred that the processing unit **110** is configured to initiate the emission of light from the light emitting diode  $D_{em}$  no earlier than after that the processing unit **110** has been allowed sufficient time to receive digital data  $D_{FB}$  (e.g. via the above-mentioned digitizing unit **150**) representing the initial measurement value  $V_1$ . In practice, this normally means that a period  $T4$  after the threshold time  $T3$  must also expire before the specified interval  $T0$  can be initiated.

Additionally, according to one preferred embodiment of the invention, the processing unit **110** is configured to control the light detectors in coordination with the light pulses, such that the precharging interval  $T2$  is terminated no earlier than a delay time  $TD$  after expiry of the specified interval  $T0$  during which light is emitted from the given light emitting diode  $D_{em}$ . Consequently, the first and third control signals  $PC$  and  $R$  respectively have such timing interrelationship that the pre-charging interval  $T2$  continues at least a period  $TD$  after ending the specified interval  $T0$ . Then, at the end of the delay time  $TD$ , the voltage  $V_A$  is caused to drop down to a relatively low idle voltage in response to the first control signal  $PC$ . Here, the delay time  $TD$  represents a conversion time of the digitizing unit **150** for producing the digital data  $D_{FB}$  based on the received measurement value, i.e. a secondary measurement value  $V_2$  registered by the photo diode  $D_{ph}$  during emission of light  $\Lambda_{em}$  from the light source  $D_{em}$ .

In order to make sure that the secondary measurement value  $V_2$  is registered while the light  $\Lambda_{em}$  from the light emitting diode  $D_{em}$  still is being emitted, the processing unit **110** is preferably configured to record digital data  $D_{FB}$  representing this value a time  $T5$  after the initiating of the specified interval  $T0$ , where  $T5 < T0$ . In other words, it is advantageous if the processing unit **110** is configured to control the array of light sources **131** and **132** such that each light pulse  $\Lambda_{em}$  (or  $\Lambda_{emX}$  and  $\Lambda_{emY}$  in FIG. 1) has a duration  $T0$  exceeding a conversion time of the digitizing unit **150** for producing the digital data  $D_{FB}$  based on the received measurement values. At the end of the specified interval  $T0$ , the voltage  $V_B$  is caused to drop down from a value slightly exceeding the secondary measurement value  $V_2$  in response to the first control signal  $PC$ . The voltage  $V_B$  levels out at a  $V_1$ -value designating an updated ambient light intensity in respect of a subsequent light pulse.

FIG. 4 illustrates a mobile terminal **T**, which includes the above-described interface arrangement. Hence, the terminal **T** may be any type of device which is configured to process digital data in response to user-generated commands, and present processed information on a display device **D** integrated in the terminal **T**. I.e. the terminal may represent a cellular/mobile phone, a wireless telephone, a PDA (Portable Digital Assistant), a portable game device, or a hybrid unit comprising two or more thereof.



In order to sum up, the general method of generating input commands to a mobile terminal according to the invention will be described below with reference to the flow diagram in FIG. 5.

A first step 510 records at least one initial measurement value, which is registered by at least one detector in an array of light detectors arranged along one side of a display device. The initial measurement value(s) is/are taken to represent(s) an ambience light intensity.

Subsequently, a step 520 initiates transmission of light over the display device from at least one light source in an array of light sources, which is arranged along a side of the display device different from the side where the array of light detectors is arranged. Hence, a light pulse starts. A step 530 then records a secondary measurement value registered by at least one light detector, i.e. during transmission of light from the at least one light source. Thereafter, a step 540 terminates the transmission of light from the at least one source in an array of light sources. Hence, the light pulse ends.

After that, based on the initial and secondary measurement values, a step 550 determines whether or not a light-obstructive object was present on the display device between the at least one light source and at least one light detector. Finally, the procedure loops back to step 510 via a step 560, which causes a predefined delay. The delay is here adapted to accomplish a desired separation in time between two consecutive light pulses, such that a respective light pulse is repeatedly transmitted from each source according to a predefined sequence.

All of the process steps, as well as any sub-sequence of steps, described with reference to the FIG. 5 above may be controlled by means of a programmed computer apparatus. Moreover, although the embodiments of the invention described above with reference to the drawings comprise computer apparatus and processes performed in computer apparatus, the invention thus also extends to computer programs, particularly computer programs on or in a carrier, adapted for putting the invention into practice. The program may be in the form of source code; object code, a code intermediate source and object code such as in partially compiled form, or in any other form suitable for use in the implementation of the process according to the invention. The carrier may be any entity or device capable of carrying the program. For example, the carrier may comprise a storage medium, such as a Flash memory, a ROM (Read Only Memory), for example a CD (Compact Disc) or a semiconductor ROM, an EPROM (Erasable Programmable Read-Only Memory), an EEPROM (Electrically Erasable Programmable Read-Only Memory), or a magnetic recording medium, for example a floppy disc or hard disc. Further, the carrier may be a transmissible carrier such as an electrical or optical signal which may be conveyed via electrical or optical cable or by radio or by other means. When the program is embodied in a signal which may be conveyed directly by a cable or other device or means, the carrier may be constituted by such cable or device or means. Alternatively, the carrier may be an integrated circuit in which the program is embedded, the integrated circuit being adapted for performing, or for use in the performance of, the relevant processes.

The term "comprises/comprising" when used in this specification is taken to specify the presence of stated features, integers, steps or components. However, the term does not preclude the addition of one or more additional features, integers, steps or components or groups thereof.

The invention is not restricted to the described embodiments in the figures, but may be varied freely within the scope of the claims.

The invention claimed is:

1. An interface arrangement for receiving input commands in a mobile terminal, comprising:
  - a display device adapted to present visual information to a user,
  - at least one array of light sources arranged along at least one first side of the display device, each array of light sources being configured to transmit light pulses over the display device,
  - at least one array of light detectors arranged along at least one second side of the display device, each array of light detectors being configured to receive a part of the energy in the transmitted light pulses,
  - a processing unit adapted to control the at least one array of light sources such that a respective light pulse is repeatedly transmitted from each light source according to a predefined sequence, and to receive information pertaining to light energy registered by the at least one array of light detectors, characterized in that the processing unit is adapted to:
    - record an initial measurement value registered by at least one light detector prior to transmitting the light pulse of a designated light source, the initial measurement value representing an ambience light intensity, and
    - determine whether or not a light-obstructive object is present on the display device between the designated light source and at least one light detector based on the initial measurement value and a secondary measurement value registered by at least one light detector during transmission of light from the designated light source, and
    - a digitizing unit configured to receive measurement values from the at least one array of light detectors and in response thereto deliver digital data to the processing unit,
    - wherein the processing unit is configured to control the at least one array of light sources such that each light pulse has a duration exceeding a time of the digitizing unit for producing digital data based on the received measurement values.
2. The interface arrangement according to claim 1, wherein the display device has a rectangular outline with four separate sides, and the at least one second side represents a respective side opposite to the at least one first side.
3. The interface arrangement according to claim 1, comprising a selection means adapted to control the at least one array of light sources to transmit light from the designated light source during a specified time interval.
4. The interface arrangement according to claim 3, wherein the processing unit is adapted to cause pre-charging of at least one light detector in coordination with the light transmitted from the designated light source such that the pre-charging is initiated at least a threshold time prior to a start of the specified time interval.
5. The interface arrangement according to claim 3, wherein the processing unit is configured to cause pre-charging of at least one light detector in coordination with the light transmitted from the designated light source such that the pre-charging is terminated no earlier than a delay time after expiry of the specified time interval, the delay time representing a time of the digitizing unit for producing digital data based on the received measurement values.
6. The interface arrangement according to claim 1, wherein the processing unit is configured to initiate the transmission of light from the designated light source no earlier than after digital data representing the initial measurement value has been received by the processing unit.

7. A mobile terminal for processing digital data, characterized in that the terminal comprises the interface arrangement according to claim 1.

8. A method of generating input commands to a mobile terminal having: a display device adapted to present visual information to a user, an array of light sources arranged along a first side of the display device and configured to transmit light pulses over the display device, and an array of light detectors arranged along a second side of the display device, the array of light detectors being configured to receive a part of the energy in the transmitted light pulses, the method comprising:

controlling the array of light sources such that a respective light pulse is repeatedly transmitted from each light source according to a predefined sequence, receiving information pertaining to light energy registered by the array of light detectors, and based thereon recording an initial measurement value registered by at least one light detector prior to transmitting the light pulse of a designated light source, the initial measurement value representing an ambience light intensity determining whether or not a light-obstructive object is present on the display device between the designated light source and at least one light detector based on the initial measurement value and a secondary measurement value registered by at least one light detector during transmission of light from the light source, digitizing measurement values received from the array of light detectors, and controlling the array of light sources such that each light pulse has a duration exceeding a time for digitizing the measurement values.

9. The method according to claim 8, comprising controlling the array of light sources to transmit light from the designated light source during a specified time interval.

10. The method according to claim 9, comprising pre-charging the at least one light detector in coordination with the transmission of light from the designated light source in such a manner that the pre-charging is initiated at least a threshold time prior to start of the specified time interval.

11. The method according to claim 8, comprising initiating the transmission of light from the designated light source no earlier than after digital data representing the initial measurement value has been received by the processing unit.

12. The method according to claim 8, comprising pre-charging the at least one light detector in coordination with the transmission of light from the given light source such that the pre-charging is terminated no earlier than a delay time after expiry of the specified time interval during which light is transmitted from the designated light source, the delay time representing a time for digitizing the measurement values.

13. A non-transitory computer readable medium, having a program recorded thereon, where the program instructs a computer to perform the steps of:

controlling an array of light sources such that a respective light pulse is repeatedly transmitted from each light source according to a predefined sequence, receiving information pertaining to light energy registered by an array of light detectors, and based thereon recording an initial measurement value registered by at least one light detector prior to transmitting the light pulse of a designated light source, the initial measurement value representing an ambience light intensity, determining whether or not a light-obstructive object is present on the display device between the designated light source and at least one light detector based on the initial measurement value and a secondary measurement

value registered by at least one light detector during transmission of light from the light source, digitizing measurement values received from the array of light detectors, and controlling the array of light sources such that each light pulse has a duration exceeding a time for digitizing the measurement values.

14. An interface arrangement for receiving input commands in a mobile terminal, comprising:

a display device adapted to present visual information to a user; at least one array of light sources arranged along at least one first side of the display device, each array of light sources being configured to transmit light pulses over the display device; at least one array of light detectors arranged along at least one second side of the display device, each array of light detectors being configured to receive a part of the energy in the transmitted light pulses, a processing unit adapted to control the at least one array of light sources such that a respective light pulse is repeatedly transmitted from each light source according to a predefined sequence, and to receive information pertaining to light energy registered by the light detectors, characterized in that the processing unit is adapted to: record an initial measurement value registered by at least one light detector prior to transmitting the light pulse of a designated light source, the initial measurement value representing an ambience light intensity; and determine whether or not a light-obstructive object is present on the display device between the designated light source and at least one light detector based on the initial measurement value and a secondary measurement value registered by at least one light detector during transmission of light from the designated light source,

a selection means adapted to control the at least one array of light sources to transmit light from the designated light source during a specified time interval; and a digitizing unit configured to receive measurement values from the at least one array of light detectors and in response thereto deliver digital data to the processing unit, wherein the processing unit is adapted to cause pre-charging of at least one light detector in coordination with the light transmitted from the designated light source such that the pre-charging is initiated at least a threshold time prior to start of the specified time interval, and is terminated no earlier than a delay time after expiry of the specified time interval, the delay time representing a time of the digitizing unit for producing digital data based on the received measurement values.

15. The interface arrangement according to claim 14, wherein the display device has a rectangular outline with four separate sides, and the at least one second side represents a respective side opposite to the at least one first side.

16. The interface arrangement according to claim 14, wherein the processing unit is configured to initiate the transmission of light from the designated light source no earlier than after digital data representing the initial measurement value has been received by the processing unit.

17. The interface arrangement according to claim 14, wherein the processing unit is configured to control the at least one array of light sources such that each light pulse has a duration exceeding a time of the digitizing unit for producing the digital data based on the received measurement values.

11

18. A mobile terminal for processing digital data, characterized in that the terminal comprises the interface arrangement according to claim 14.

19. A method of generating input commands to a mobile terminal having: a display device adapted to present visual information to a user, an array of light sources arranged along a first side of the display device and configured to transmit light pulses over the display device, and an array of light detectors arranged along a second side of the display device, the array of light detectors being configured to receive a part of the energy in the transmitted light pulses, the method comprising:

controlling the array of light sources such that a respective light pulse is repeatedly transmitted from each light source according to a predefined sequence;

receiving information pertaining to light energy registered by the array of light detectors, and based thereon: recording an initial measurement value registered by at least one light detector prior to transmitting the light pulse of a designated light source, the initial measurement value representing an ambience light intensity; and determining whether or not a light-obstructive object is present on the display device between the designated light source and at least one light detector based on the initial measurement value and a secondary measurement value registered by at least one light detector during transmission of light from the light source;

digitizing measurement values received from the array of light detectors; controlling the array of light sources to transmit light from the designated light source during a specified time interval; and pre-charging at least one light detector in coordination with the transmission of light from the designated light source in such a manner that the pre-charging is initiated at least a threshold time prior to a start of the specified time interval, and is terminated no earlier than a delay time after expiry of the specified time interval, the delay time representing a time for digitizing the measurement values.

20. The method according to claim 19, comprising initiating the transmission of light from the designated light source

12

no earlier than after digital data representing the initial measurement value has been received by the processing unit.

21. The method according to claim 19 comprising controlling the array of light sources such that each light pulse has a duration exceeding a time for digitizing the measurement values.

22. A non-transitory computer readable medium, having a program recorded thereon, where the program instructs a computer to perform the steps of:

controlling an array of light sources such that a respective light pulse is repeatedly transmitted from each light source according to a predefined sequence;

receiving information pertaining to light energy registered by an array of light detectors, and based thereon:

recording an initial measurement value registered by at least one light detector prior to transmitting the light pulse of a designated light source, the initial measurement value representing an ambience light intensity; and

determining whether or not a light-obstructive object is present on the display device between the designated light source and at least one light detector based on the initial measurement value and a secondary measurement value registered by at least one light detector during transmission of light from the light source;

digitizing measurement values received from the array of light detectors;

controlling the array of light sources to transmit light from the designated light source during a specified time interval; and

pre-charging at least one light detector in coordination with the transmission of light from the designated light source in such a manner that the pre-charging is initiated at least a threshold time prior to a start of the specified time interval, and is terminated no earlier than a delay time after expiry of the specified time interval, the delay time representing a time for digitizing the measurement values.

\* \* \* \* \*